

SPARE PARTS CATALOG

CLASSIC 40



MOVINCOOL®
THE #1 SPOT COOLING SOLUTION

DocID: 00G00086EA

Table of Contents

No.	UNIT PART NUMBER	PRODUCTION PERIOD	REFRIGERANT	SECTION	ISSUE DATE (mm/'yy)
1	GX484000-4090	FROM May 2009 (0509) TO Present	R410A	Page 3 ~ 13 SP0031-02	03/'11
2	484000-3630	FROM June 2006 (0606) TO April 2009 (0409)	R22	Page 15 ~ 27 SP0064-03	05/'11
3	484000-2551	FROM April 2006 (0406) TO May 2006 (0506)	R22	Page 29 ~ 43 SP0063-03	05/'11
4	484000-3630	March 2006 (0306)	R22	Page 15 ~ 27 SP0064-03	05/'11
5	484000-2551	FROM April 2001 (0401) TO February 2006 (0206)	R22	Page 29 ~ 43 SP0063-03	05/'11
	484000-2550				

© 2011 DENSO SALES CALIFORNIA, INC.

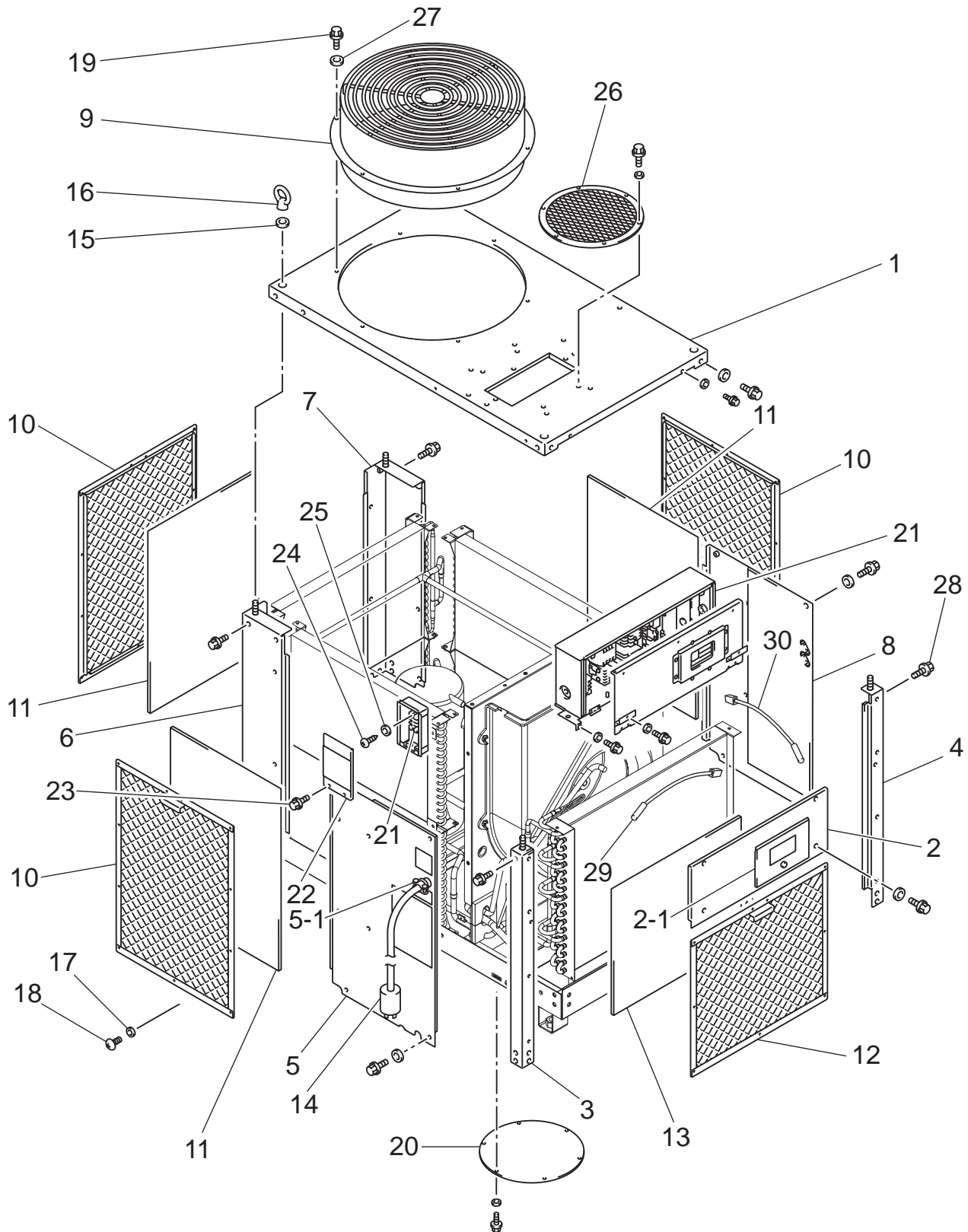
All rights reserved. This book may not be reproduced or copied, in whole or in part, without the written permission of the publisher. DENSO SALES CALIFORNIA, INC. reserves the right to make changes without prior notice. MovinCool®, Office Pro® and SpotCool® are registered trademarks of DENSO Corporation.

CLASSIC 40

Unit Part No: GX484000-4090

Production Period: From May 2009 (0509)
To Present

CLASSIC 40



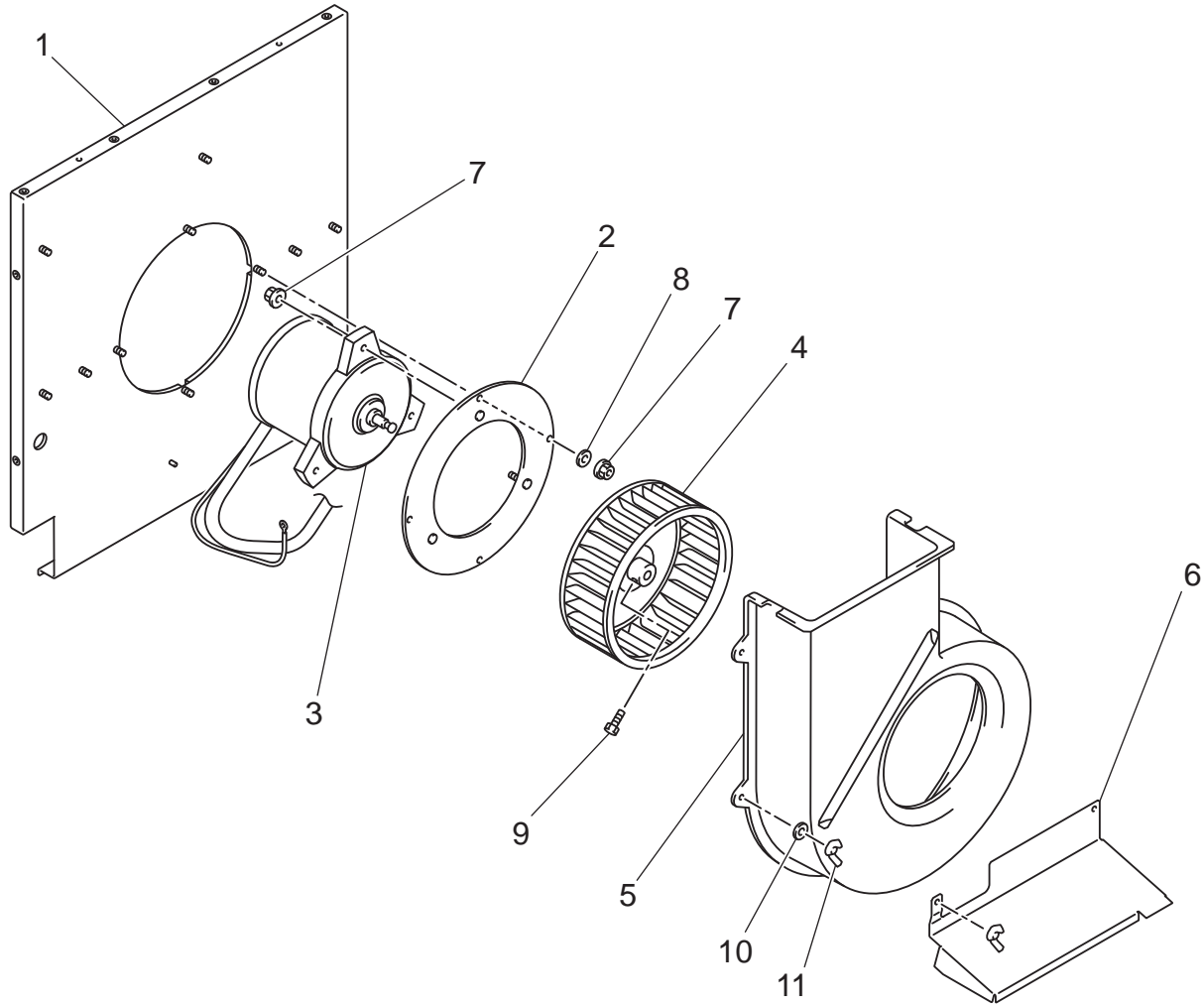
CLASSIC 40

ILL. NO.	DESCRIPTION	PART NO.	QTY.	MODIFICATION DATE (mm/yy)	REMARKS
1	Frame Assy, Upper	GX484300-3050	1		
2	Panel Assy, Front	GX484410-9180	1		w/ILL.NO.2-1
2-1	Cover, Controller	GX484390-1260	1		
3	Frame Assy, Front Left	GX484300-3030	1		
4	Frame Assy, Front Right	GX484300-3040	1		
5	Panel Assy, Left	GX484410-9160	1		w/ILL.NO.5-1
5-1	Connector, Power Cord	GX484506-0310	1		
6	Frame Sub-Assy, Left Rear	GX484310-5590	1		
7	Frame Sub-Assy, Right Rear	GX484310-5600	1		
8	Panel Assy, Right	GX484410-9171	1		
9	Duct Assy, Exhaust	GX484370-0150	1		
10	Frame, Condenser Filter	GX484300-3141	3		
11	Filter, Condenser	484401-1900	3		
12	Frame, Evaporator Filter	GX484300-0401	1		
13	Filter, Evaporator	484401-0681	1		
14	Wire Assy	GX481950-0630	1		Power Cord
15	Washer, Plate	90200-17001	4		For Eyenut (ILL.NO.16)
16	Eyenut	481108-0011	4		M16x2
17	Washer, Plate	90201-06400	1		For Ground
18	Screw	90051-06120	1		M6, L=12, For Ground
19	Screw w/Washer	91570-06147	58		M6x1, L=14
20	Panel Sub-Assy	GX484470-4590	1		For Base
21	Terminal Block	484503-0093	1		(TB4), For Condenser Fan Motor
22	Cover Sub-Assy	GX484390-1220	1		For Sub-Control Box
23	Bolt	480919-0370	4		M4x0.7, L=10
24	Screw	949006-3280	2		M4x0.7, L=18
25	Washer, Plate	90200-04001	2		
26	Cover Sub-Assy	GX484390-1280	1		Grill For Evaporator Outlet
27	Washer, Toothed	949016-0120	52		
28	Bolt w/Washer	949047-4890	28		M10x1.5, L=17
29	Thermistor, Room Temperature	482780-1550	1		(RTS)
30	Thermistor, Anti-Freeze Up	482780-1540	1		(FTS)

CLASSIC 40

ILL. NO.	DESCRIPTION	PART NO.	QTY.	MODIFICATION DATE (mm/yy)	REMARKS
1	Compressor Assy	GX484650-2950	1		w/Pipe For Discharge & Suction w/ILL.NO.1-1
1-1	Wire Assy	GX481950-0480	1		
2	Collar	LA484915-0280	4		
3	Cushion	LA484904-0220	4		
4	Washer, Steel Plate	949011-5330	4		For Compressor
5	Nut	90190-08651	4		M8x1.25, For Compressor
6	Core Assy, Evaporator	GX484600-2440	1		
7	Pipe Assy, Capillary	GX484800-4810	1		
8	Core Assy, Condenser	GX484600-2420	3		
9	Pipe Assy, Lower Circuit	GX484800-4770	1		w/ILL.NO.9-1
9-1	High Pressure Switch Assy	GX484660-0550	1		(HPS)
10	Pipe Assy, Upper Circuit	GX484800-4790	1		
11	Pipe Assy, Connecting	GX484800-4820	1		
12	Washer, Plate	90201-04300	2		For Ground
13	Screw	91051-04100	2		M4x0.7, L=10, For Ground
14	Pipe Assy, Charging	484800-0440	1		5 Pieces Per Package

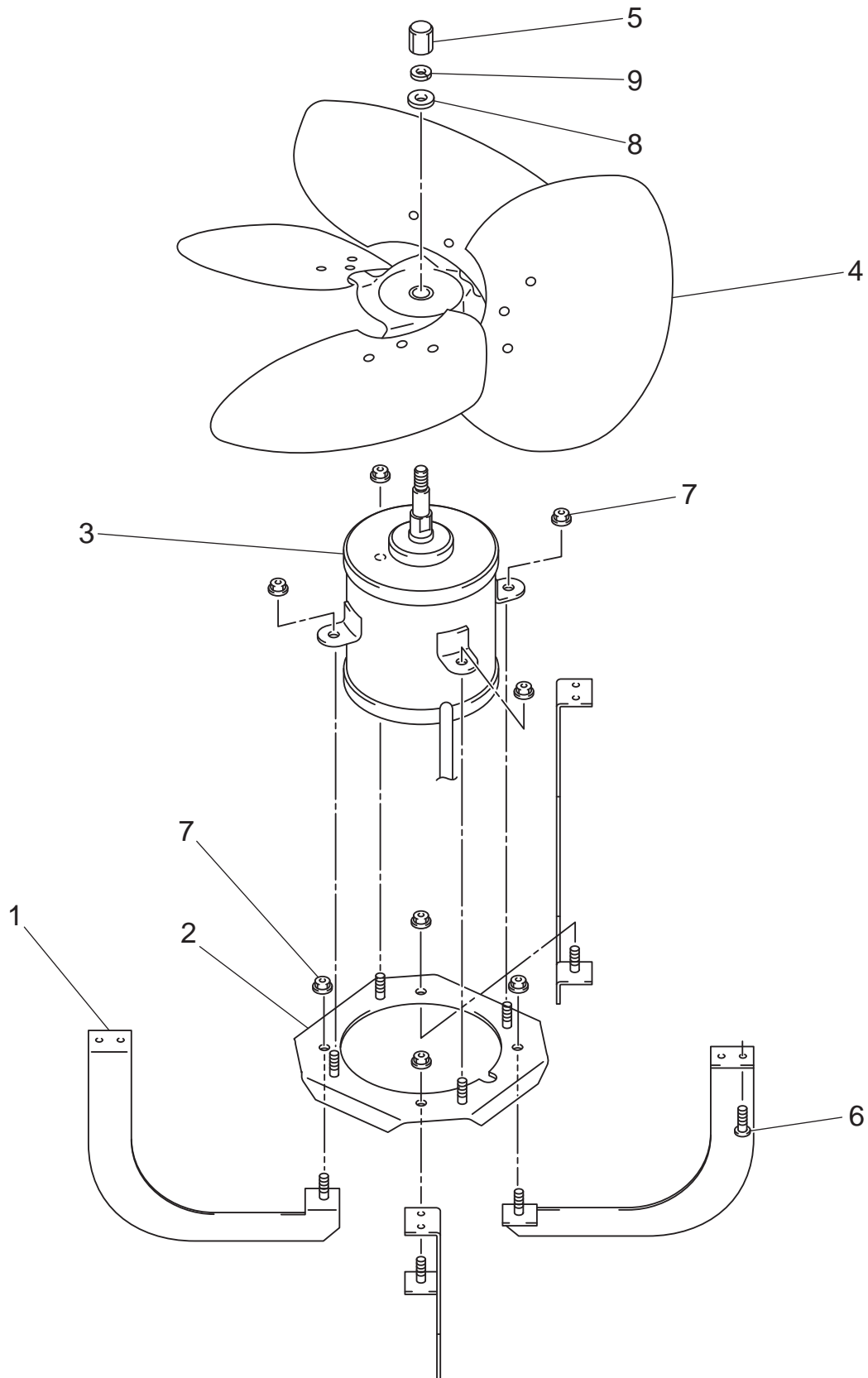
CLASSIC 40



CLASSIC 40

ILL. NO.	DESCRIPTION	PART NO.	QTY.	MODIFICATION DATE (mm/yy)	REMARKS
1	Frame Sub-Assy	GX484310-5660	1		
2	Ring Sub-Assy	484280-0020	1		
3	Motor, Evaporator	484211-0331	1		
4	Fan	484221-0072	1		
5	Casing, Evaporator Fan	484382-0051	1		
6	Cover	484391-0530	1		
7	Nut	92150-08081	7		M8x1.25
8	Washer, Toothed	949016-0320	4		
9	Bolt	949041-0940	1		M8x1.25, L=16
10	Washer, Plate	90200-05221	5		
11	Nut, Wing	90130-05001	6		M5x0.8

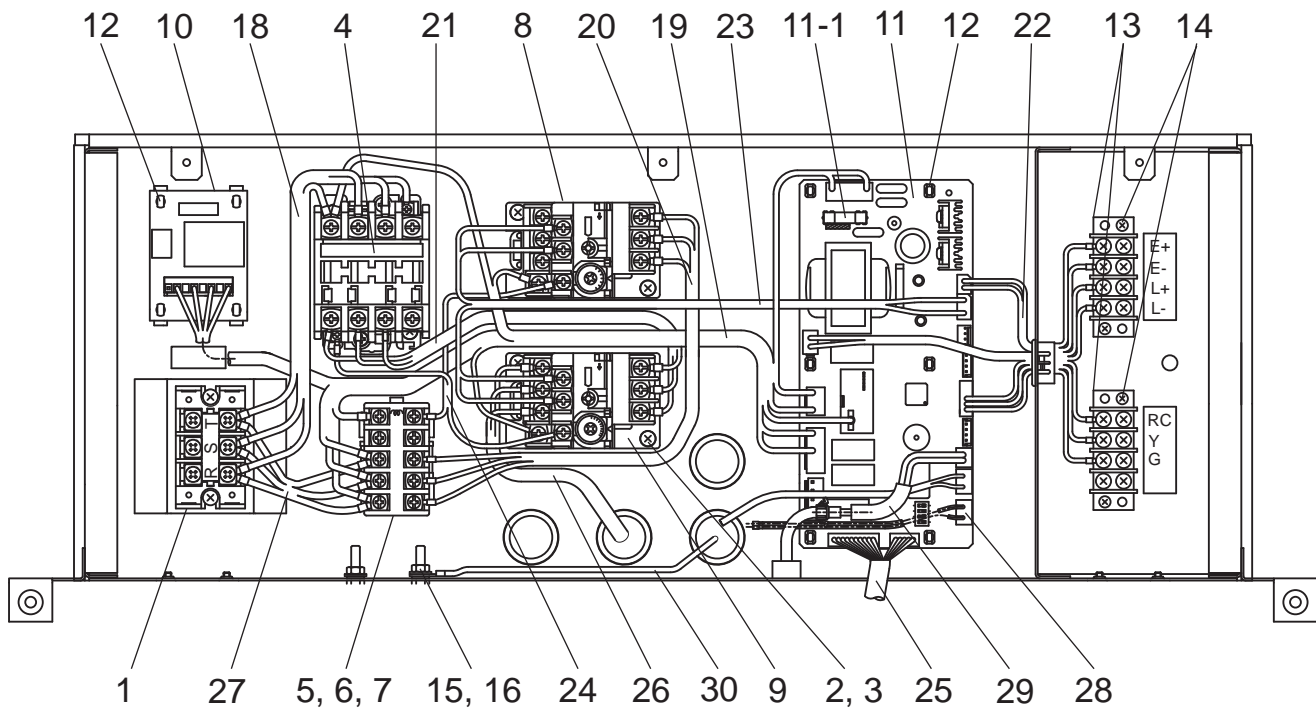
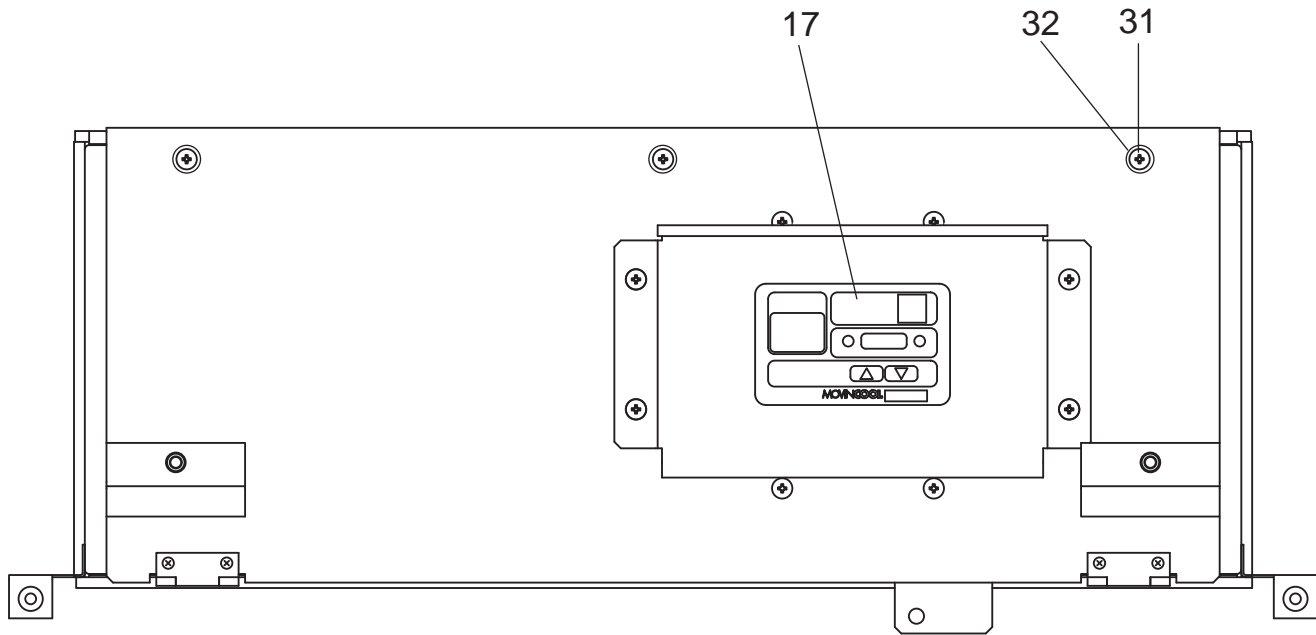
CLASSIC 40



CLASSIC 40

ILL. NO.	DESCRIPTION	PART NO.	QTY.	MODIFICATION DATE (mm/yy)	REMARKS
1	Stay Sub-Assy	GX484340-3290	4		
2	Frame Sub-Assy	GX484320-0690	1		
3	Motor, Condenser	484211-0341	1		
4	Fan	484221-0060	1		
5	Nut, Bag	481216-0020	1		M12, For Left Screw
6	Bolt w/Washer	91570-06147	8		M6x1, L=14
7	Nut	92150-08081	8		M8x1.25
8	Collar, Steel	949192-4540	1		
9	Washer, Wave	949017-1270	1		

CLASSIC 40



CLASSIC 40

ILL. NO.	DESCRIPTION	PART NO.	QTY.	MODIFICATION DATE (mm/yy)	REMARKS
1	Terminal Block	484503-0093	1		(TB1), For Power Cord
2	Screw	949006-3280	8		M4x0.7, L=18
3	Washer, Plate	90200-04001	6		
4	Relay, Compressor	484531-0850	1		(MCC)
5	Screw	949006-3250	2		M4x0.7, L=10, For Holder
6	Relay, Fan Motor	484531-0820	1		(MCF), For Evaporator
7	Holder, Relay	185642-0090	1		w/ILL.NO.6
8	Overcurrent Relay, Evaporator Fan	484505-0340	1		(OCF1)
9	Overcurrent Relay, Condenser Fan	484505-0360	1		(OCF2)
10	Relay, Reverse Phase Protector	484500-3290	1		(RPHR)
11	Controller Assy	484500-3710	1		(RB), w/ILL.NO.11-1
11-1	Fuse	481936-0140	1		5A, 250V 5 Pieces Per Package
12	Support	482125-3170	10		
13	Terminal Block	GX484503-0840	2		For Input/Output Signal (TB2)
14	Screw w/Washer	91310-03161	4		M3x0.5, L=16
15	Washer, Plate	90201-04300	2		
16	Nut	91161-04320	2		M4x0.7
17	Switch Assy	GX484560-2120	1		Operation Panel & PCB
18	Wire Assy	481950-0490	1		(TB1)↔(MCC)
19	Wire Assy	481950-0502	1		(RB)↔(RPHR)
20	Wire Assy	481950-0511	1		(MCF)↔(OCF1)
21	Wire Assy	481950-0521	1		(MCC)↔(OCF2)
22	Wire Assy	481950-0531	1		(RB)↔(TB2)
23	Wire Assy	481950-0542	1		(RB)↔(OCF1), (OCF2)
24	Wire Assy	481950-0550	1		(MCC), (MCF)↔(OCF1), (OCF2)
25	Wire Assy	481950-0561	1		(RB)↔Operation Panel
26	Wire Assy	481950-0571	1		(OCF2)↔(TB4)
27	Wire Assy	481950-0581	1		(TB1)↔(MCF)
28	Wire Assy	481950-0600	1		(RB)↔(HPS)
29	Wire Assy	481950-0610	1		(RB)↔(RTS)
30	Wire Assy	484932-0482	1		For Ground
31	Screw w/Washer	91370-04107	3		M4x0.7, L=10
32	Washer, Toothed	949016-0230	3		For Screw w/Washer (ILL.NO.31)

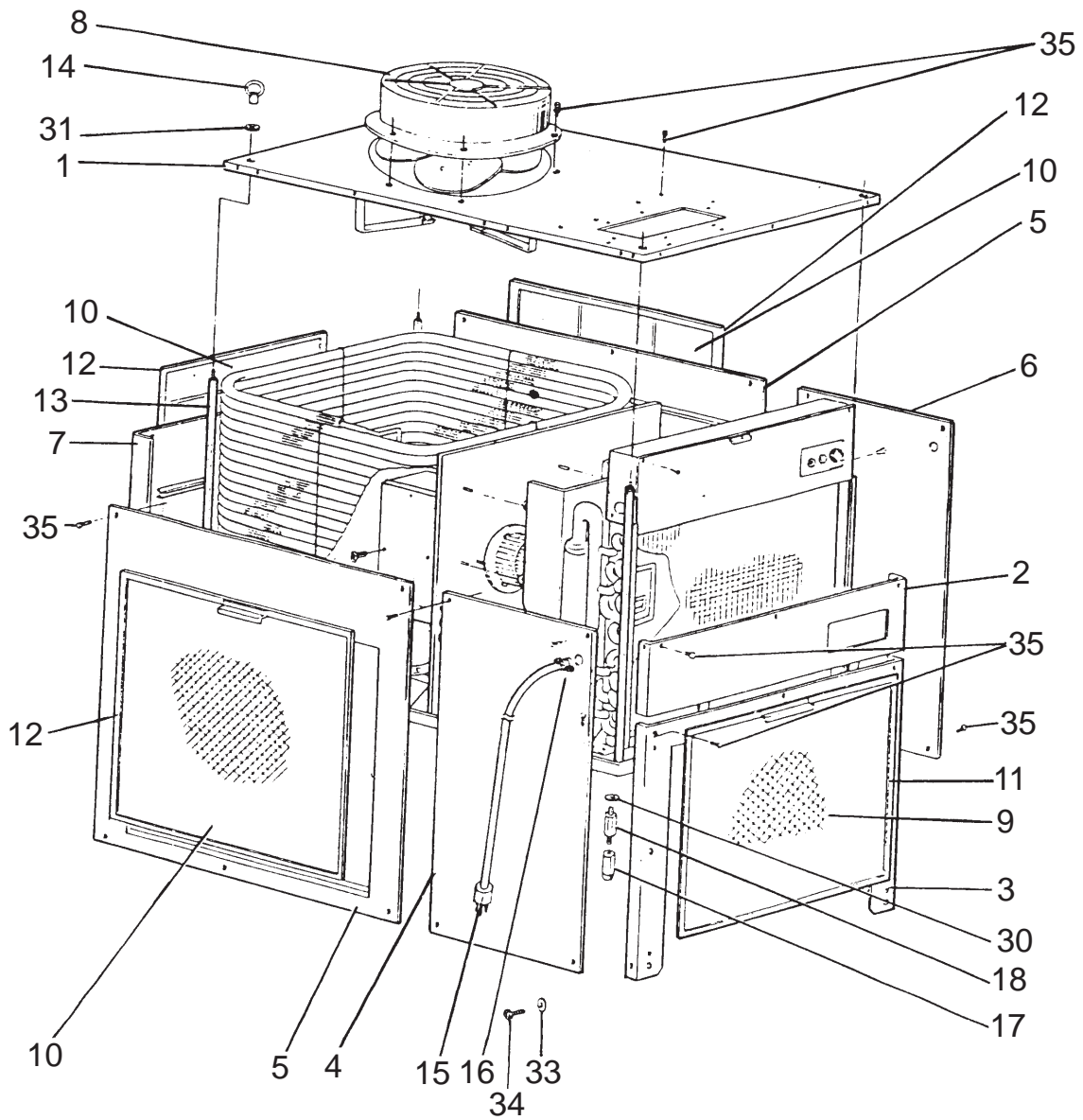
[Memo]

CLASSIC 40

Unit Part No: 484000-3630

Production Period: From June 2006 (0606)
To April 2009 (0409)
March 2006 (0306)

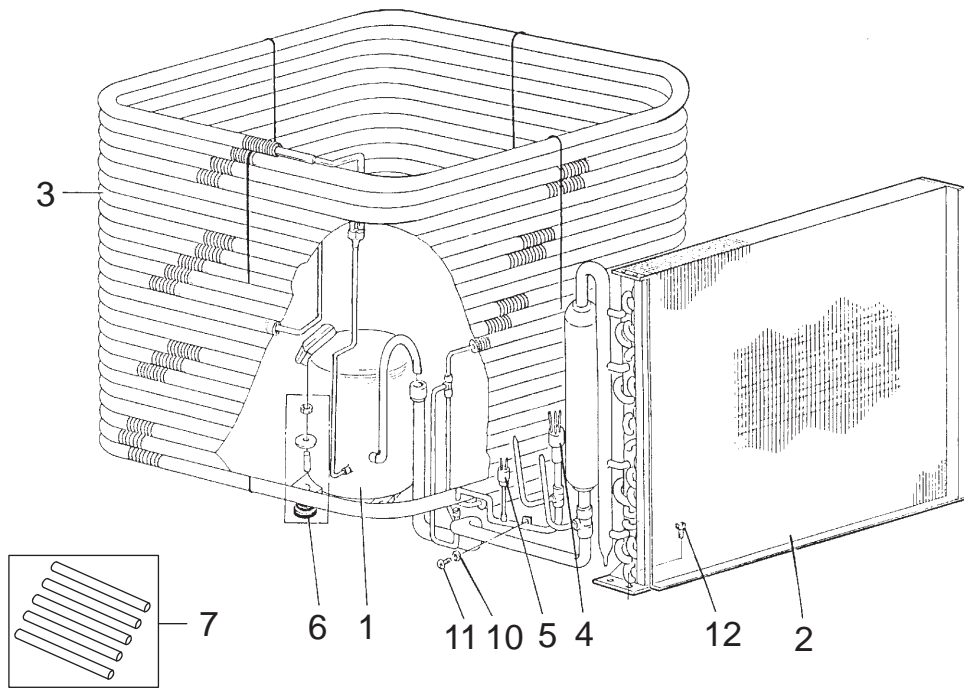
CLASSIC 40



CLASSIC 40

ILL. NO.	DESCRIPTION	PART NO.	QTY.	MODIFICATION DATE (mm/yy)	REMARKS
	Unit Assy				
1	Frame Assy	484300-0490	1		Upper
2	Panel Assy	484410-1110	1		Front
3	Panel Assy	484410-1102	1		For Evaporator
4	Panel Assy	484410-1121	1		w/ILL.16
5	Panel Assy	484410-0881	2		Side
6	Panel Assy	484410-1130	1		Right
7	Panel Assy	484410-0891	1		Rear
8	Duct Assy, Exhaust	484370-0020	1		
9	Filter	484401-0681	1		For Evaporator
10	Filter	484401-0871	3		For Condenser
11	Frame Assy	484300-0400	1		For Evaporator
12	Frame Assy	484300-0380	3		For Condenser
13	Bolt, Spacer	484911-0300	4		M16, Hex.Size 19
14	Eyenuit	481108-0011	4		M16
15	Wire Assy	484930-1271	1		Power Cord
16	Connector	479748-0020	1		For Power Cord
17	Nut, Holder	481202-0040	4		M16, Hex.Size 27
18	Bolt, Spacer	484911-0160	4		M16, Hex.Size 27
30	Washer, Plate	90200-20001	4		T3.2
31	Washer, Plate	90200-17001	4		T3
33	Washer, Plate	90201-06400	1		For Ground
34	Screw, Crossrecess Pan	90051-06120	1		M6, L12, For Ground
35	Bolt, w/Washer	91570-06147	59		M6, L14

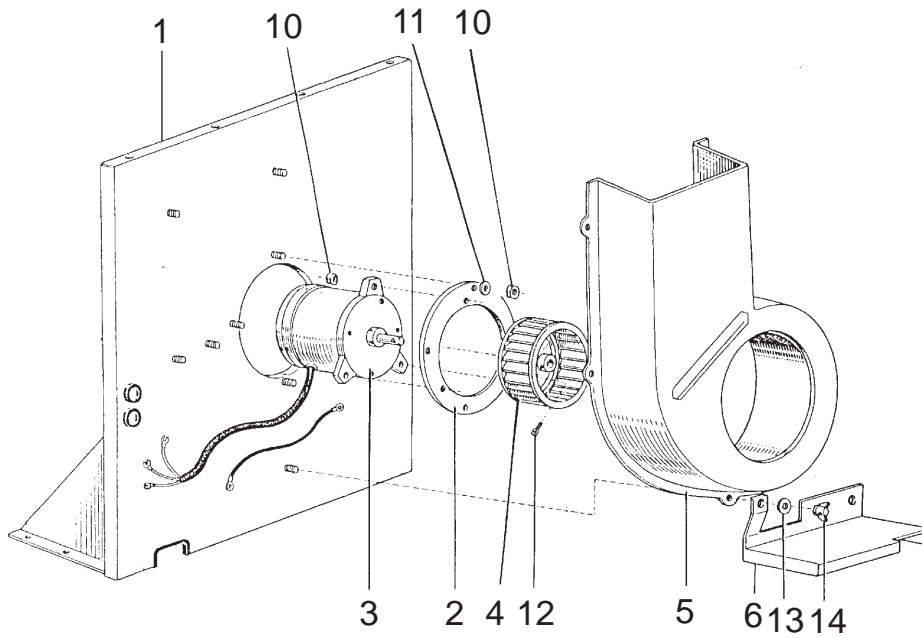
CLASSIC 40



CLASSIC 40

ILL. NO.	DESCRIPTION	PART NO.	QTY.	MODIFICATION DATE (mm/yy)	REMARKS
1	Compressor Assy	484650-2540	1		
2	Core Assy	484600-0670	1		Evaporator
3	Core Assy	484600-0660	1		Condenser
4	Tube Assy, Capillary	484640-0140	1		
5	Switch Assy, Pressure	484660-0160	1		High Pressure Switch
6	Accessory Kit, Service	481799-0250	1		Compressor Mount Parts
7	Pipe Assy	484800-0440	1		For Charging, 5 Pieces Per Package
10	Washer, Plate	90201-04300	1		T0.8
11	Screw, Crossrecess Pan	91051-04100	1		M4, L10
12	Bolt	480919-0100	4		M6, L12

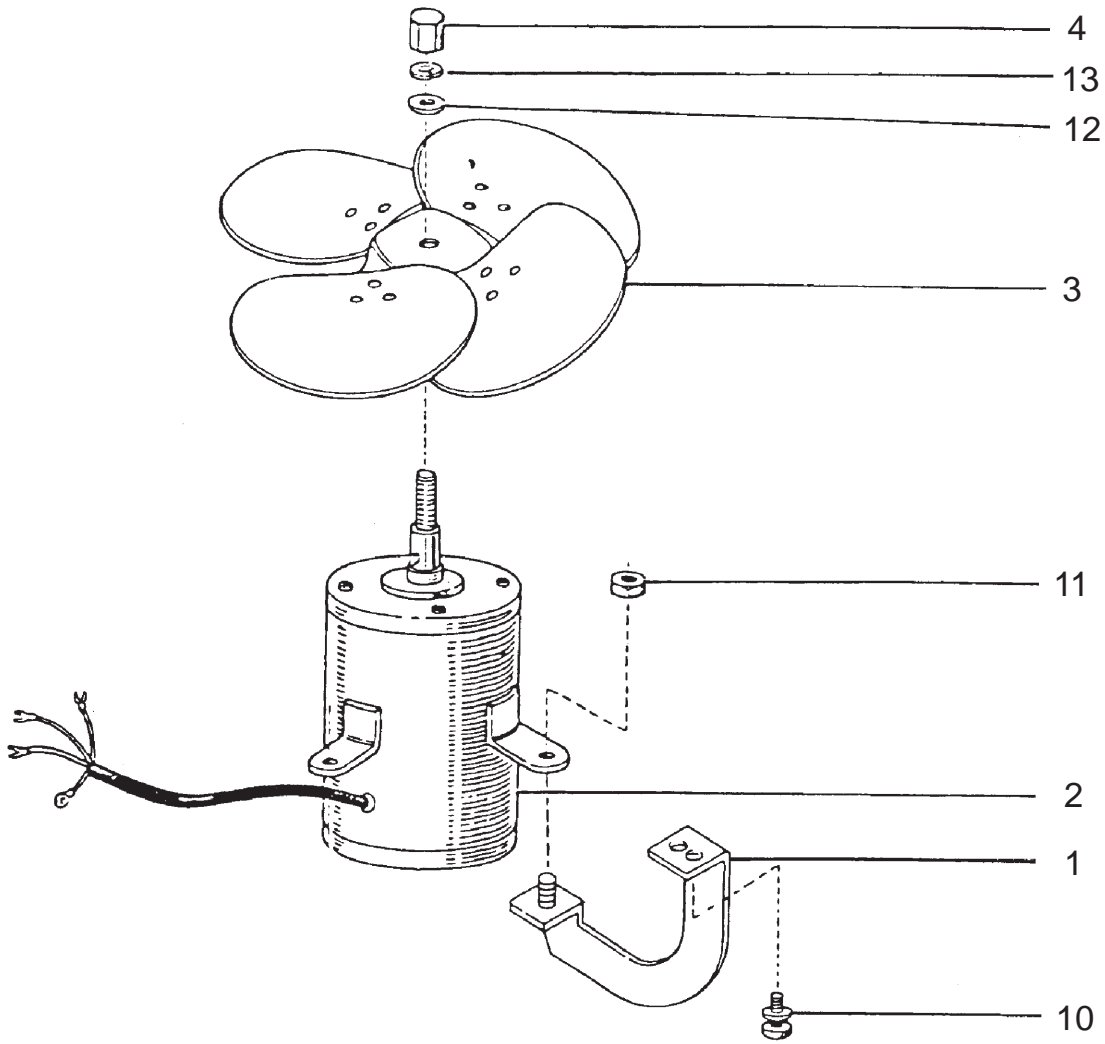
CLASSIC 40



CLASSIC 40

ILL. NO.	DESCRIPTION	PART NO.	QTY.	MODIFICATION DATE (mm/yy)	REMARKS
1	Frame Sub-Assy	484310-0941	1		
2	Ring Sub-Assy	484280-0020	1		
3	Motor	484211-0331	1		
4	Fan	484221-0072	1		
5	Casing, Evaporator Fan	484382-0051	1		
6	Cover	484391-0530	1		
10	Nut, Flange	92150-08081	7		M8
11	Washer, Toothed	949016-0320	4		ID8.4
12	Bolt, Slotted Hexagon	949041-0940	1		
13	Washer, Plate	90200-05221	5		T1
14	Nut, Wing	90130-05001	5		M5

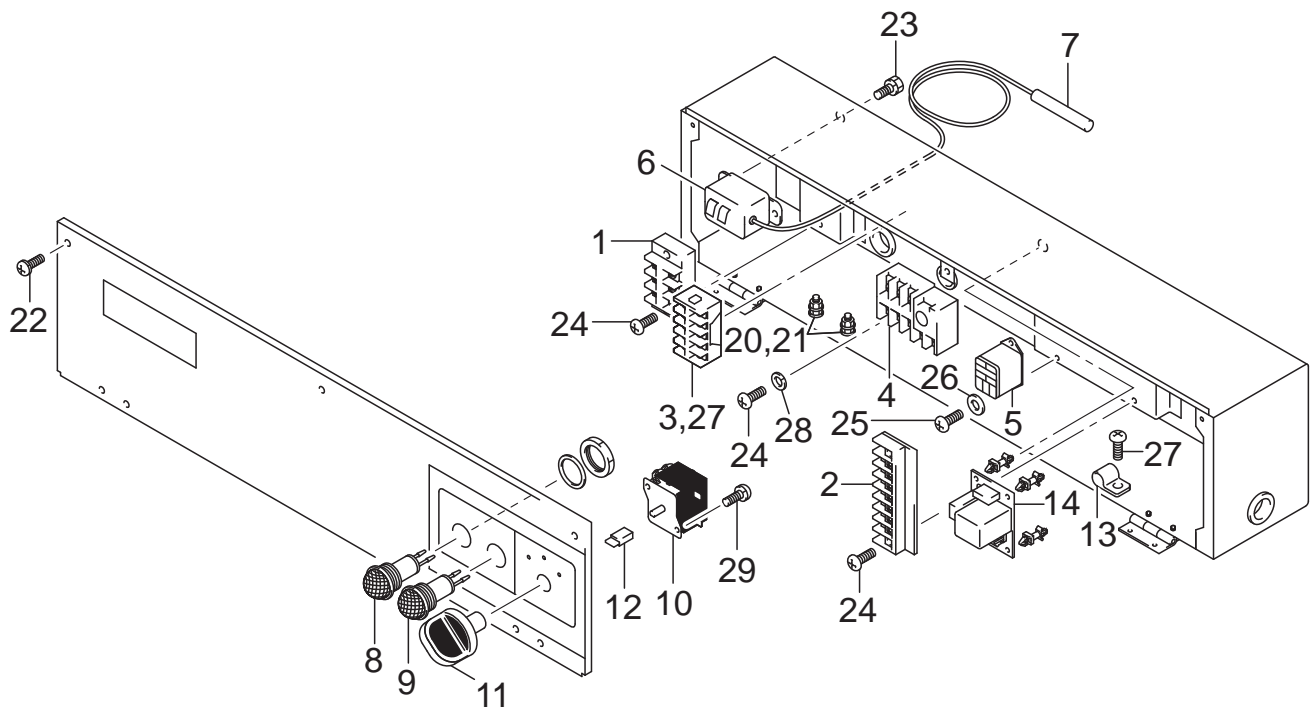
CLASSIC 40



CLASSIC 40

ILL. NO.	DESCRIPTION	PART NO.	QTY.	MODIFICATION DATE (mm/yy)	REMARKS
1	Stay Sub-Assy	484340-1020	4		
2	Motor	484211-0341	1		
3	Fan	484221-0060	1		
4	Nut, Bag	481216-0020	1		For Left Screw
10	Bolt, w/Washer	91570-06147	8		M6, L14
11	Nut, Flange	92150-08081	4		M8
12	Collar, Steel	949192-4540	1		
13	Washer, Wave	949017-1270	1		T1.2

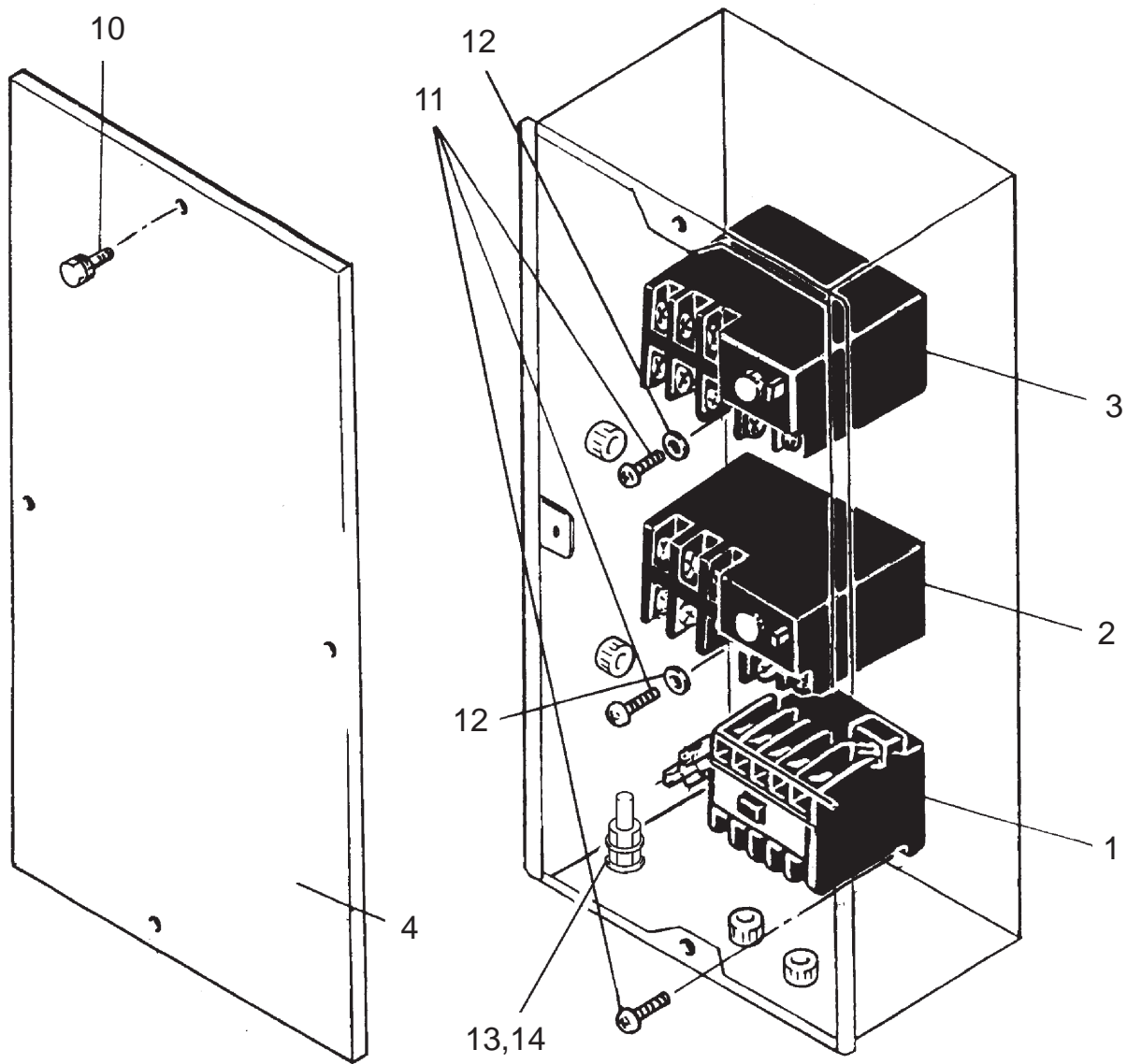
CLASSIC 40



CLASSIC 40

ILL. NO.	DESCRIPTION	PART NO.	QTY.	MODIFICATION DATE (mm/yy)	REMARKS
	Controller Assy				
1	Terminal	484503-0093	1		(TB1), For Power Cord
2	Terminal	484503-0051	1		(TB2), For Branch Circuit
3	Relay	484531-0160	1	-04/07	For Evaporator Fan Motor
		484531-0820	1	05/07-	For Evaporator Fan Motor
4	Thermal (Overcurrent Relay)	484505-0190	1	-08/07	For Evaporator Fan Motor
		484505-0340	1	09/07-	For Evaporator Fan Motor
5	Relay	484531-0170	1		
6	Thermostat	484504-0020	1		For Antifreezing
7	Cap	484922-0080	1		
8	Lamp	484933-0110	1		Color:Clear
9	Lamp	484933-0120	1		Color:Red
10	Switch Assy	484560-1740	1		
11	Knob	484923-0150	1		
12	Clip	484917-0131	1		
13	Clip	480841-0140	1		D12
14	Reverse Phase Relay Kit	484009-0710	1	03/06	
	Controller Assy (Reverse Phase Relay)	484500-3290	1	06/06-	
20	Nut, Hexagon	91161-04320	4		M4
21	Washer, Plate	90201-04300	4		T0.8
22	Screw, w/Washer	91370-04107	3		M4, L10
23	Bolt, w/Washer	949047-0220	2		M4, L8
24	Screw	949006-3280	6		M4, L18
25	Screw	949006-4440	2		M3, L8
26	Washer, Plate	90200-03081	2		T0.5
27	Screw	949006-3250	3		M4, L10
28	Washer, Plate	90200-04001	4		T0.5
29	Screw, w/Washer	91370-04081	2		M4, L8

CLASSIC 40



CLASSIC 40

ILL. NO.	DESCRIPTION	PART NO.	QTY.	MODIFICATION DATE (mm/yy)	REMARKS
	Control Box Assy				
1	Relay	484531-0180	1	-08/07	For Compressor
		484531-0850	1	09/07-	For Compressor
2	Thermal (Overcurrent Relay)	484505-0200	1	-08/07	For Compressor
		484505-0350	1	09/07-	For Compressor
3	Thermal (Overcurrent Relay)	484505-0210	1	-08/07	For Condenser Fan Motor
		484505-0360	1	09/07-	For Condenser Fan Motor
4	Cover	484391-0740	1		
10	Screw, w/Washer	91370-04107	4		M4, L10
11	Screw	949006-3280	6		M4, L18
12	Washer, Plate	90200-04001	4		T0.5
13	Nut, Hexagon	91161-04320	3		M4
14	Washer, Plate	90201-04300	3		T0.8

[Memo]

CLASSIC 40

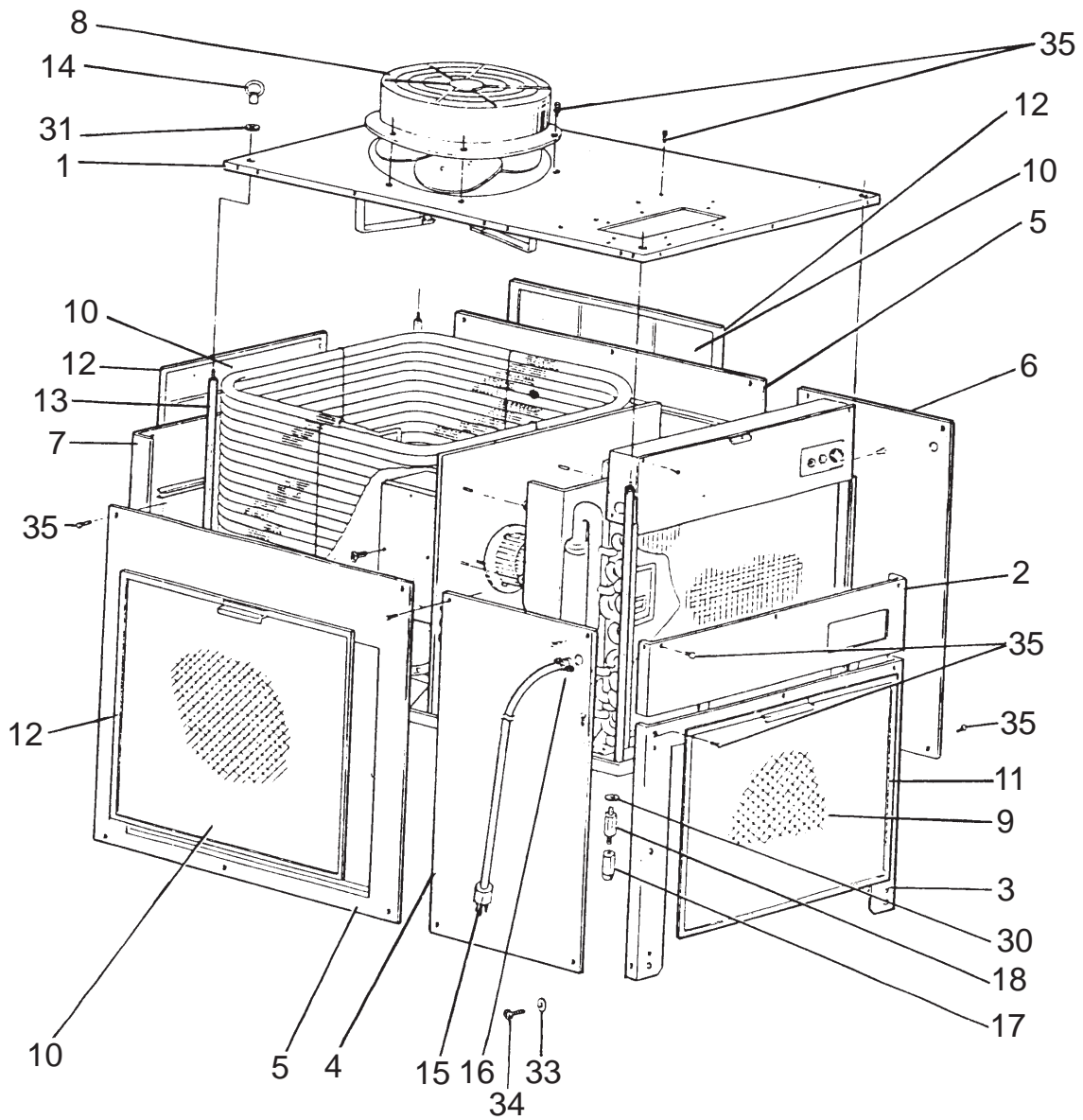
Unit Part No: 484000-2551

Production Period: From April 2006 (0406)
To May 2006 (0506)

Unit Part No: 484000-2551, 484000-2550

Production Period: From April 2001 (0401)
To February 2006 (0206)

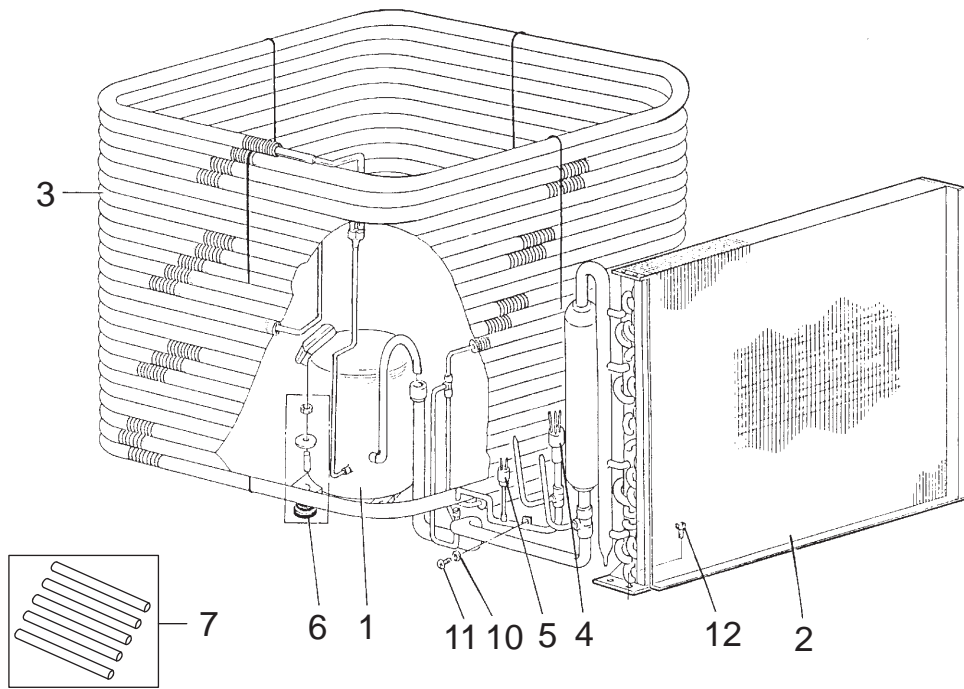
CLASSIC 40



CLASSIC 40

ILL. NO.	DESCRIPTION	PART NO.	QTY.	MODIFICATION DATE (mm/yy)	REMARKS
	Unit Assy				
1	Frame Assy	484300-0490	1		Upper
2	Panel Assy	484410-1110	1		Front
3	Panel Assy	484410-1102	1		For Evaporator
4	Panel Assy	484410-1121	1		w/ILL.16
5	Panel Assy	484410-0881	2		Side
6	Panel Assy	484410-1130	1		Right
7	Panel Assy	484410-0891	1		Rear
8	Duct Assy, Exhaust	484370-0020	1		
9	Filter	484401-0681	1		For Evaporator
10	Filter	484401-0871	3		For Condenser
11	Frame Assy	484300-0400	1		For Evaporator
12	Frame Assy	484300-0380	3		For Condenser
13	Bolt, Spacer	484911-0300	4		M16, Hex.Size 19
14	Eyenuit	481108-0011	4		M16
15	Wire Assy	484930-1271	1		Power Cord
16	Connector	479748-0020	1		For Power Cord
17	Nut, Holder	481202-0040	4		M16, Hex.Size 27
18	Bolt, Spacer	484911-0160	4		M16, Hex.Size 27
30	Washer, Plate	90200-20001	4		T3.2
31	Washer, Plate	90200-17001	4		T3
33	Washer, Plate	90201-06400	1		For Ground
34	Screw, Crossrecess Pan	90051-06120	1		M6, L12, For Ground
35	Bolt, w/Washer	91570-06147	59		M6, L14

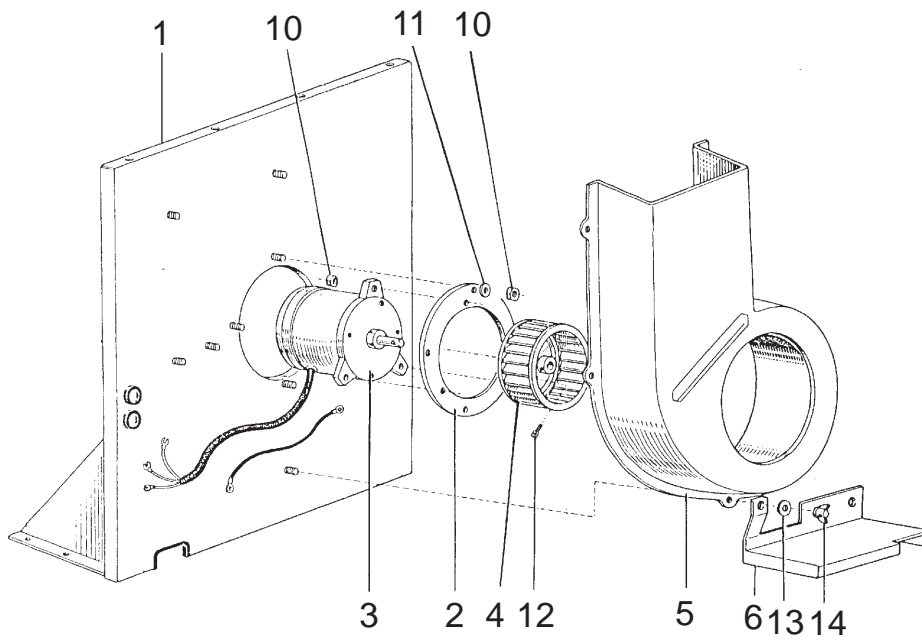
CLASSIC 40



CLASSIC 40

ILL. NO.	DESCRIPTION	PART NO.	QTY.	MODIFICATION DATE (mm/yy)	REMARKS
1	Compressor Assy	484650-0680	1		
2	Core Assy	484600-0670	1		Evaporator
3	Core Assy	484600-0660	1		Condenser
4	Tube Assy, Capillary	484640-0140	1		
5	Switch Assy, Pressure	484660-0160	1		High Pressure Switch
6	Accessory Kit, Service	481799-0140	1		Compressor Mount Parts
7	Pipe Assy	484800-0440	1		For Charging, 5 Pieces Per Package
10	Washer, Plate	90201-04300	1		T0.8
11	Screw, Crossrecess Pan	91051-04100	1		M4, L10
12	Bolt	480919-0100	4		M6, L12

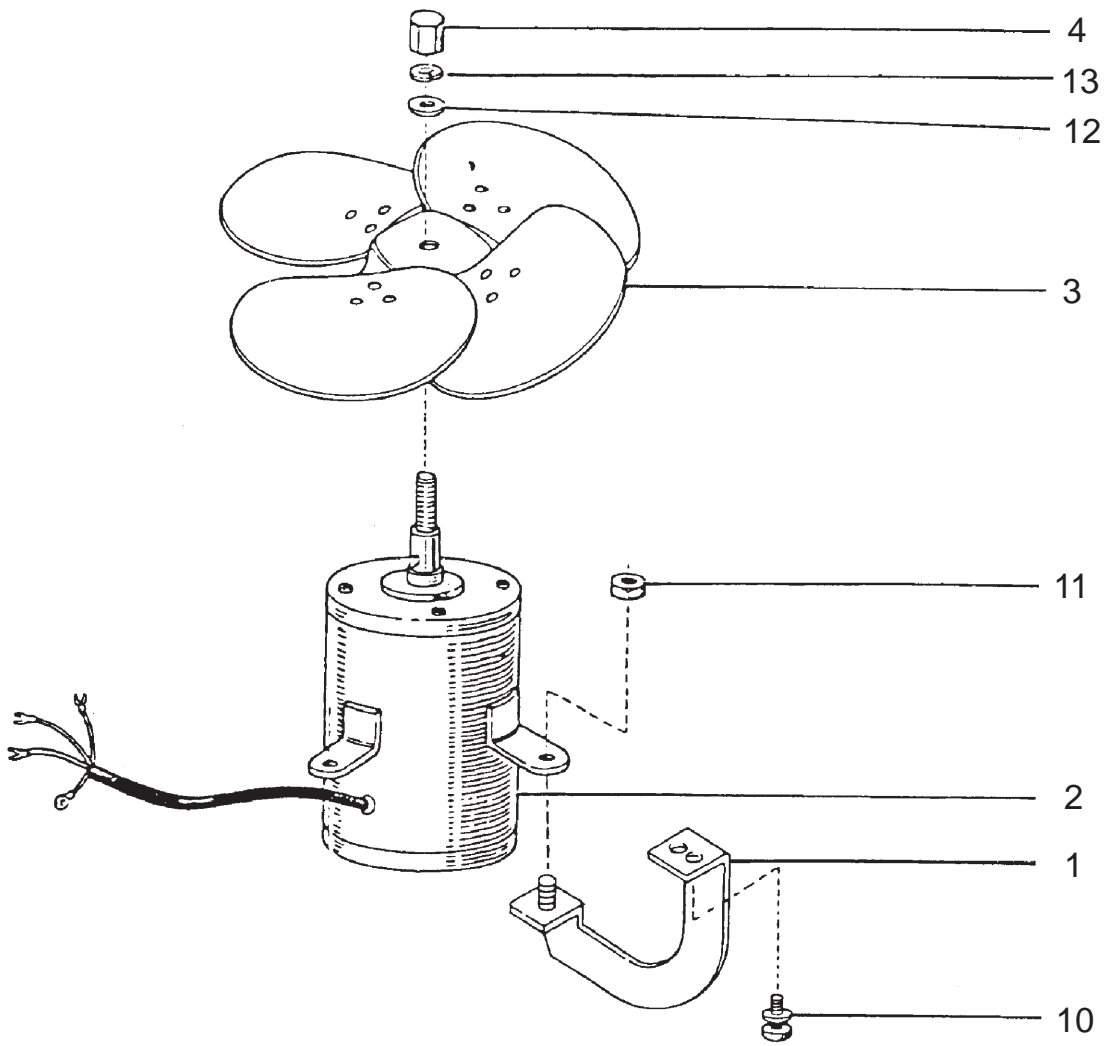
CLASSIC 40



CLASSIC 40

ILL. NO.	DESCRIPTION	PART NO.	QTY.	MODIFICATION DATE (mm/yy)	REMARKS
1	Frame Sub-Assy	484310-0941	1		
2	Ring Sub-Assy	484280-0020	1		
3	Motor	484211-0331	1		
4	Fan	484221-0072	1		
5	Casing, Evaporator Fan	484382-0051	1		
6	Cover	484391-0530	1		
10	Nut, Flange	92150-08081	7		M8
11	Washer, Toothed	949016-0320	4		ID8.4
12	Bolt, Slotted Hexagon	949041-0940	1		
13	Washer, Plate	90200-05221	5		T1
14	Nut, Wing	90130-05001	5		M5

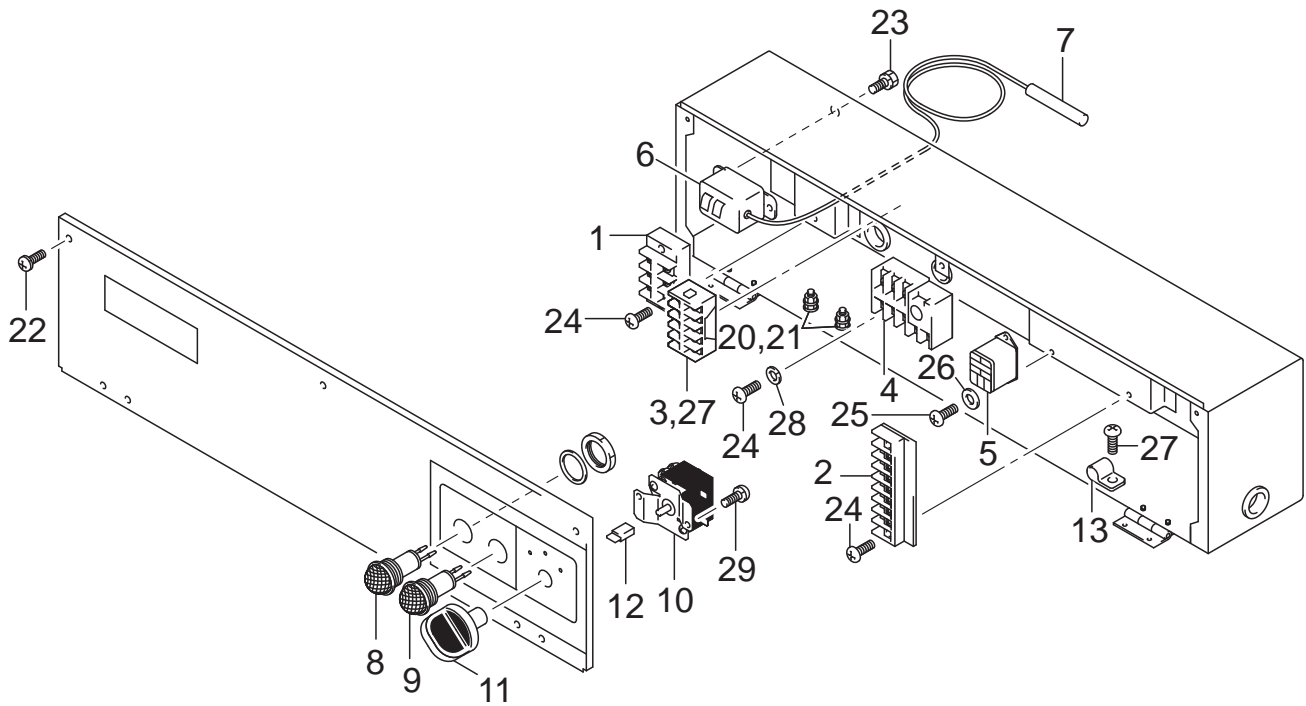
CLASSIC 40



CLASSIC 40

ILL. NO.	DESCRIPTION	PART NO.	QTY.	MODIFICATION DATE (mm/yy)	REMARKS
1	Bracket, Motor	484340-1020	4		
2	Motor	484211-0341	1		
3	Fan	484221-0060	1		
4	Nut, Bag	481216-0020	1		For Left Screw
10	Bolt, w/Washer	91570-06147	8		M6, L14
11	Nut, Flange	92150-08081	4		M8
12	Collar, Steel	949192-4540	1		
13	Washer, Wave	949017-1270	1		T1.2

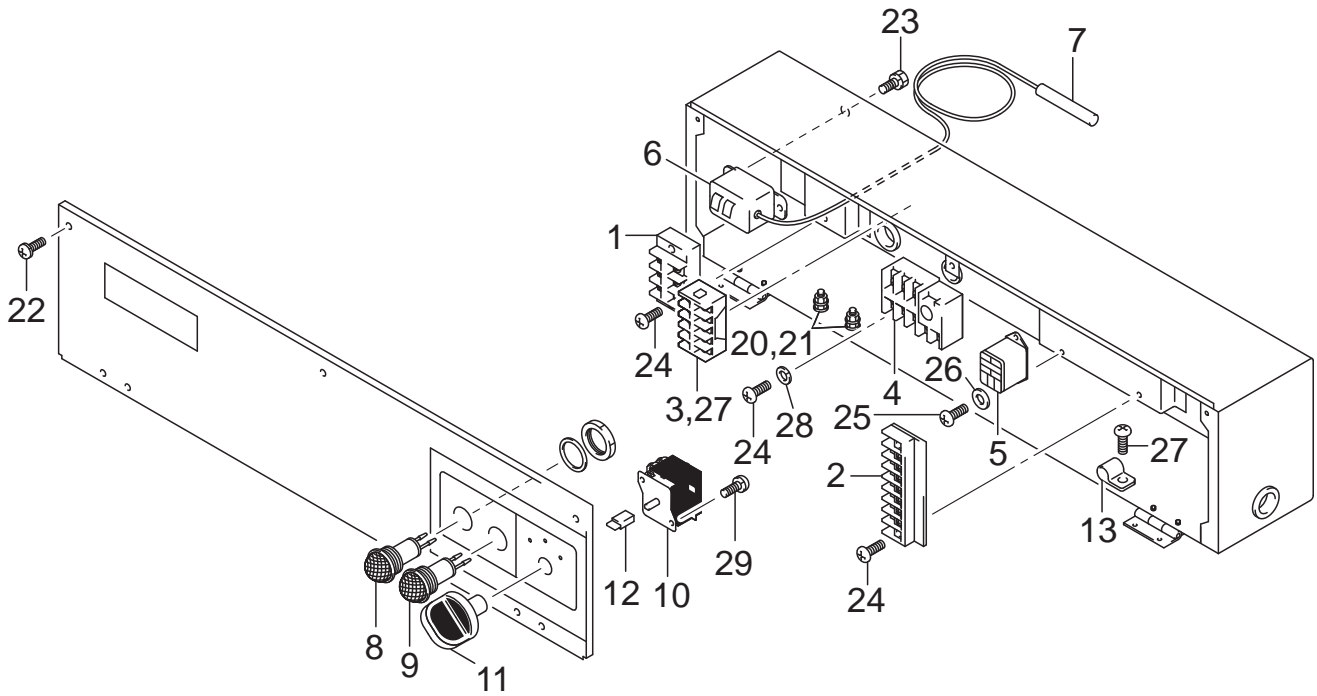
CLASSIC 40



CLASSIC 40

ILL. NO.	DESCRIPTION	PART NO.	QTY.	MODIFICATION DATE (mm/yy)	REMARKS
	Controller Assy			-06/05	
1	Terminal	484503-0093	1		(TB1), For Power Cord
2	Terminal	484503-0051	1		(TB2), For Branch Circuit
3	Relay	484531-0160	1		For Evaporator Fan Motor
4	Thermal (Overcurrent Relay)	484505-0190	1		For Evaporator Fan Motor
5	Relay	484531-0170	1		
6	Thermostat	484504-0020	1		For Antifreezing
7	Cap	484922-0080	1		
8	Lamp	484933-0110	1		Color:Clear
9	Lamp	484933-0120	1		Color:Red
10	Switch Assy	484560-1760	1		
11	Knob	484923-0150	1		
12	Clip	484917-0131	1		
13	Clip	480841-0140	1		D12
20	Nut, Hexagon	91161-04320	4		M4
21	Washer, Plate	90201-04300	4		T0.8
22	Screw, w/Washer	91370-04107	3		M4, L10
23	Bolt, w/Washer	949047-0220	2		M4, L8
24	Screw	949006-3280	6		M4, L18
25	Screw	949006-4440	2		M3, L8
26	Washer, Plate	90200-03081	2		T0.5
27	Screw	949006-3250	3		M4, L10
28	Washer, Plate	90200-04001	4		T0.5
29	Screw, w/Washer	91370-04081	2		M4, L8

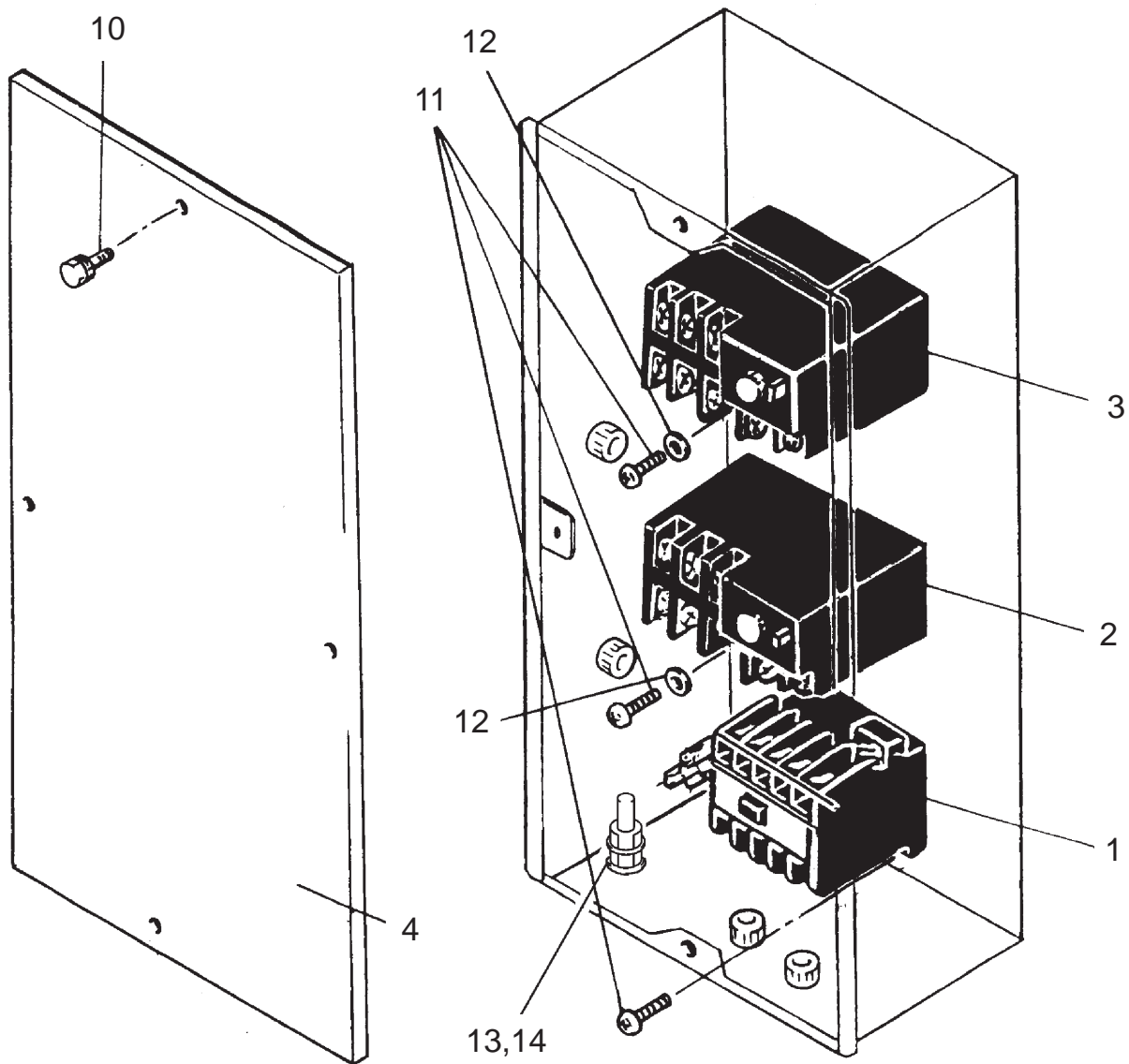
CLASSIC 40



CLASSIC 40

ILL. NO.	DESCRIPTION	PART NO.	QTY.	MODIFICATION DATE (mm/yy)	REMARKS
	Controller Assy			07/'05-	Except 03/'06
1	Terminal	484503-0093	1		(TB1), For Power Cord
2	Terminal	484503-0051	1		(TB2), For Branch Circuit
3	Relay	484531-0160	1		For Evaporator Fan Motor
4	Thermal (Overcurrent Relay)	484505-0190	1		For Evaporator Fan Motor
5	Relay	484531-0170	1		
6	Thermostat	484504-0020	1		For Antifreezing
7	Cap	484922-0080	1		
8	Lamp	484933-0110	1		Color:Clear
9	Lamp	484933-0120	1		Color:Red
10	Switch Assy	484560-1740	1		
11	Knob	484923-0150	1		
12	Clip	484917-0131	1		
13	Clip	480841-0140	1		D12
20	Nut, Hexagon	91161-04320	4		M4
21	Washer, Plate	90201-04300	4		T0.8
22	Screw, w/Washer	91370-04107	3		M4, L10
23	Bolt, w/Washer	949047-0220	2		M4, L8
24	Screw	949006-3280	6		M4, L18
25	Screw	949006-4440	2		M3, L8
26	Washer, Plate	90200-03081	2		T0.5
27	Screw	949006-3250	3		M4, L10
28	Washer, Plate	90200-04001	4		T0.5
29	Screw, w/Washer	91370-04081	2		M4, L8

CLASSIC 40



CLASSIC 40

ILL. NO.	DESCRIPTION	PART NO.	QTY.	MODIFICATION DATE (mm/yy)	REMARKS
	Control Box Assy				
1	Relay	484531-0180	1		For Compressor
2	Thermal (Overcurrent Relay)	484505-0200	1		For Compressor
3	Thermal (Overcurrent Relay)	484505-0210	1		For Condenser Fan Motor
4	Cover	484391-0740	1		
10	Screw, w/Washer	91370-04107	4		M4, L10
11	Screw	949006-3280	6		M4, L18
12	Washer, Plate	90200-04001	4		T0.5
13	Nut, Hexagon	91161-04320	3		M4
14	Washer, Plate	90201-04300	3		T0.8

DENSO
DENSO SALES CALIFORNIA, INC.

Long Beach, CA 90810
www.movincool.com

Second Issue: May 2011