

# SPARE PARTS CATALOG

## CLASSIC 60



**MOVINCOOL®**  
THE #1 SPOT COOLING SOLUTION

DocID: 00G00087EA

# Table of Contents

No.	UNIT PART NUMBER	PRODUCTION PERIOD	REFRIGERANT	SECTION	ISSUE DATE (mm/'yy)
1	GX484000-4100	FROM April 2009 (0409) TO Present	R410A	Page 3 ~ 13 SP0032-02	03/'11
2	484000-1132	FROM October 1999 (1099) TO March 2009 (0309)	R22	Page 15 ~ 25 SP0062-03	05/'11
	484000-1131				

© 2011 DENSO SALES CALIFORNIA, INC.

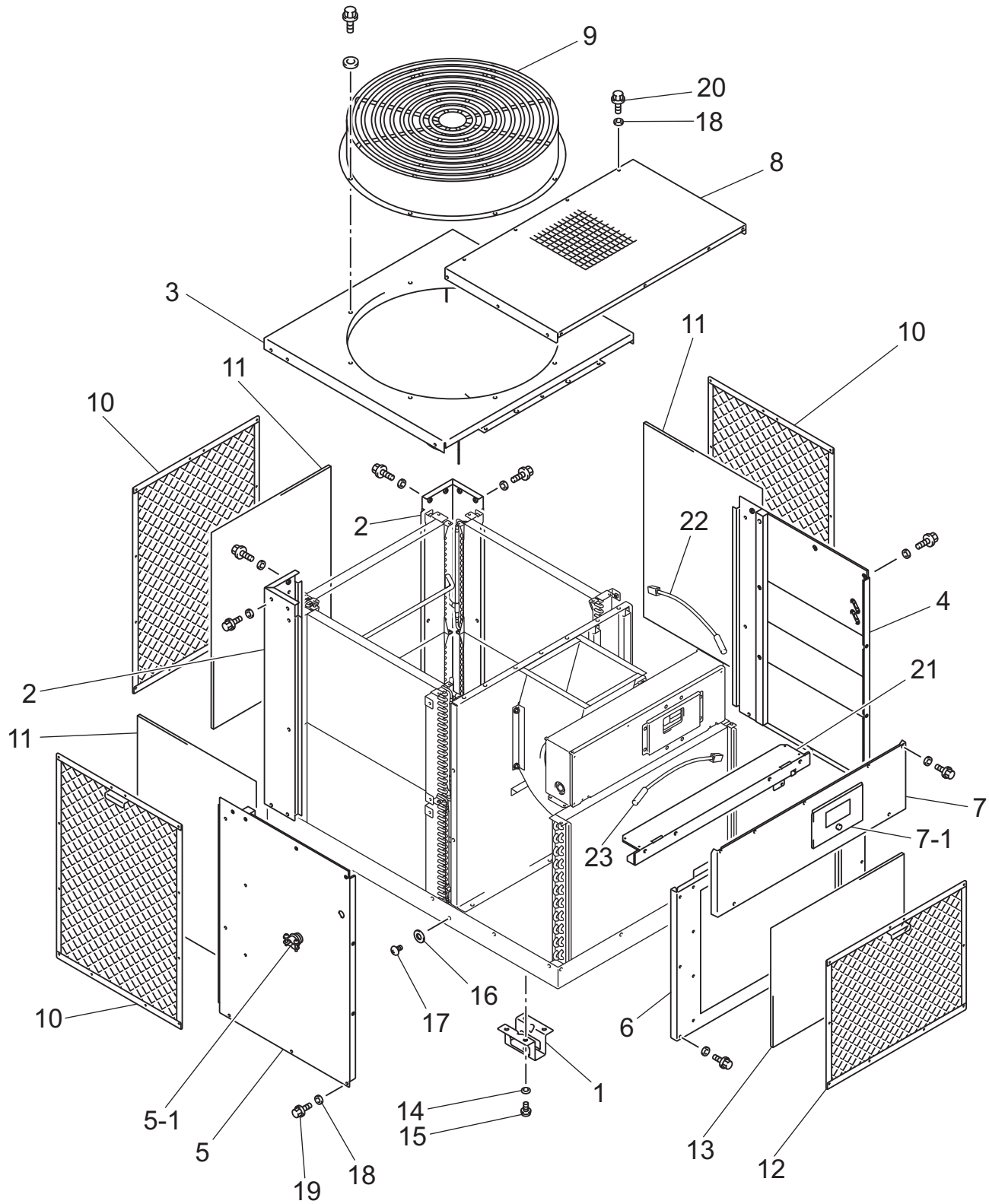
All rights reserved. This book may not be reproduced or copied, in whole or in part, without the written permission of the publisher. DENSO SALES CALIFORNIA, INC. reserves the right to make changes without prior notice. MovinCool®, Office Pro® and SpotCool® are registered trademarks of DENSO Corporation.

# **CLASSIC 60**

Unit Part No: GX484000-4100

Production Period: From April 2009 (0409)  
To Present

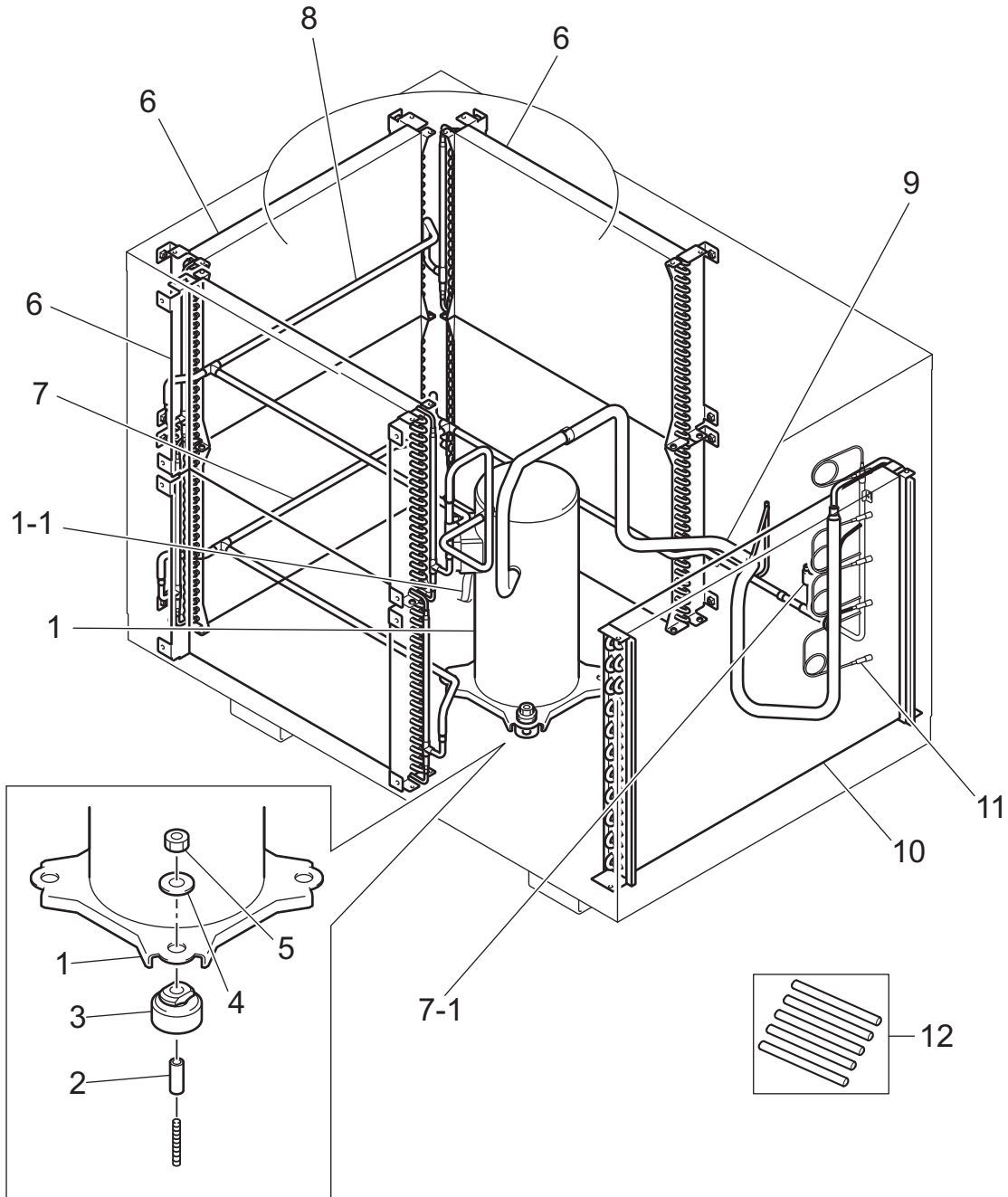
# CLASSIC 60



**CLASSIC 60**

ILL. NO.	DESCRIPTION	PART NO.	QTY.	MODIFICATION DATE (mm/'yy)	REMARKS
1	Spacer	484921-0072	4		
2	Panel Sub-Assy, Rear	GX484470-4540	2		
3	Cover Assy, Rear	GX484390-1290	1		
4	Panel Assy, Right	GX484410-9210	1		
5	Panel Assy, Left	GX484410-9190	1		w/ILL.NO.5-1
5-1	Connector, Power Cord	GX484506-0310	1		
6	Panel Assy, Evaporator	GX484410-9200	1		
7	Panel Assy, Front	GX484410-9220	1		w/ILL.NO.7-1
7-1	Cover, Controller	GX484390-1260	1		
8	Cover Assy, Front	GX484420-0600	1		
9	Duct Assy, Exhaust	GX484370-0160	1		
10	Frame, Condenser Filter	GX484300-3091	3		
11	Filter, Condenser	484401-1890	3		
12	Frame, Evaporator Filter	GX484300-3081	1		
13	Filter, Evaporator	484401-0871	1		
14	Washer, Toothed	949016-1030	16		
15	Bolt w/Washer	91470-10207	16		M10×1.25, L=20
16	Washer, Plate	90201-06400	1		For Ground
17	Screw	90051-06160	1		M6×1, L=12, For Ground
18	Washer, Toothed	949016-0120	84		
19	Bolt w/Washer	91570-06147	70		M6×1, L=14
20	Bolt w/Washer	91570-06357	14		M6×1, L=35
21	Bracket Sub-Assy	GX484320-0680	1		
22	Thermistor, Anti-Freeze Up	482780-1540	1		(FTS)
23	Thermistor, Room Temperature	482780-1550	1		(RTS)

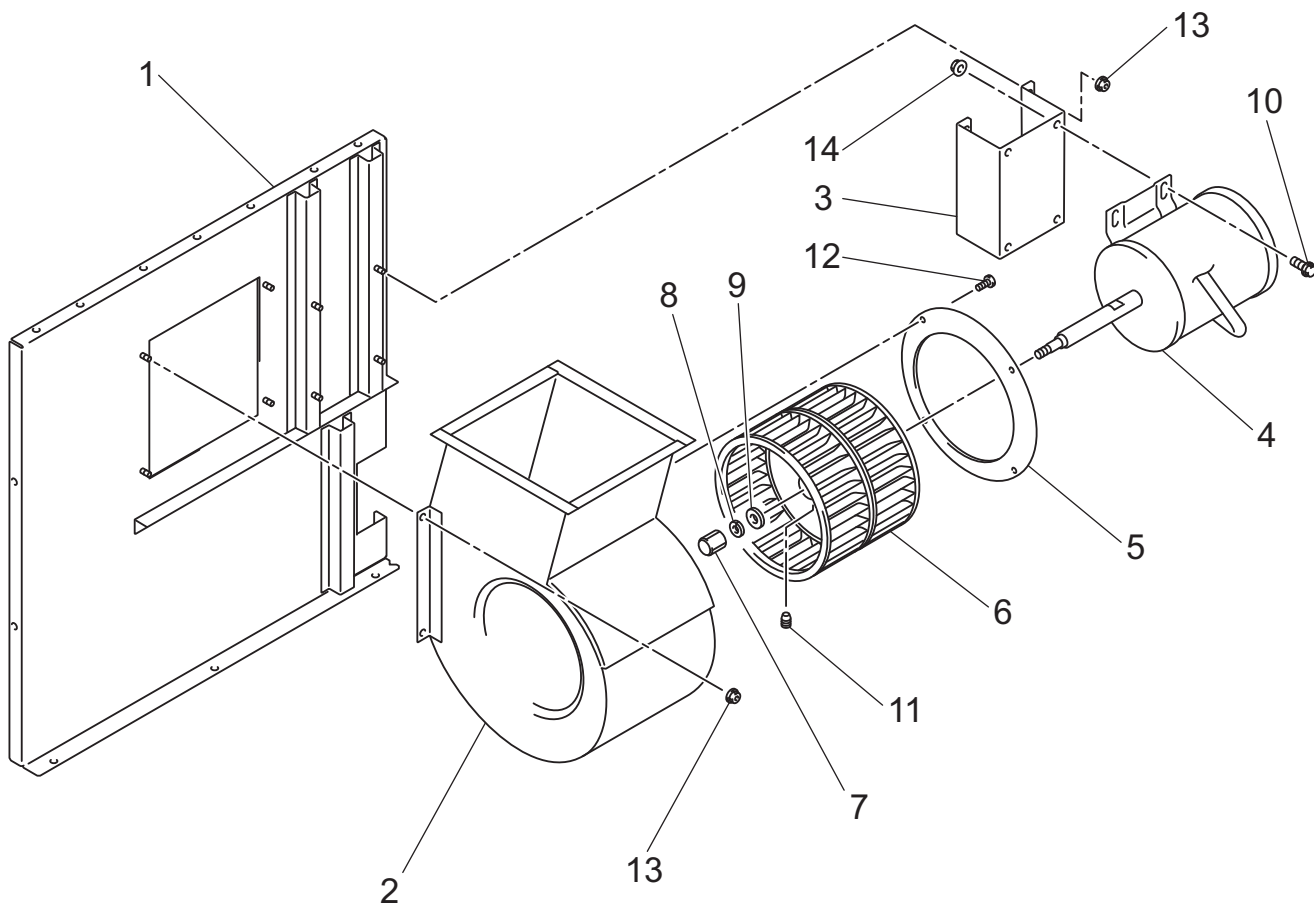
# CLASSIC 60



**CLASSIC 60**

<b>ILL. NO.</b>	<b>DESCRIPTION</b>	<b>PART NO.</b>	<b>QTY.</b>	<b>MODIFICATION DATE (mm/'yy)</b>	<b>REMARKS</b>
1	Compressor Assy	GX484650-2960	1		w/Pipe For Discharge & Suction w/ILL.NO.1-1
1-1	Wire Assy	481950-0641	1		
2	Collar	LA484915-0280	4		
3	Cushion	LA484904-0220	4		
4	Washer, Steel Plate	949011-5330	4		
5	Nut	90190-08651	4		M8×1.25
6	Core Assy, Condenser	GX484600-2430	3		
7	Pipe Assy, Lower Circuit	GX484800-4860	1		w/ILL.NO.7-1
7-1	Hight Pressure Switch Assy	GX484660-0550	1		(HPS)
8	Pipe Assy, Upper Circuit	GX484800-4850	1		
9	Pipe Assy, Connecting	GX484800-4840	1		
10	Core Assy, Evaporator	GX484600-2450	1		
11	Distributor Assy	GX484620-0140	1		Capillary
12	Pipe Assy, Charging	484800-0440	1		5 Pieces Per Package

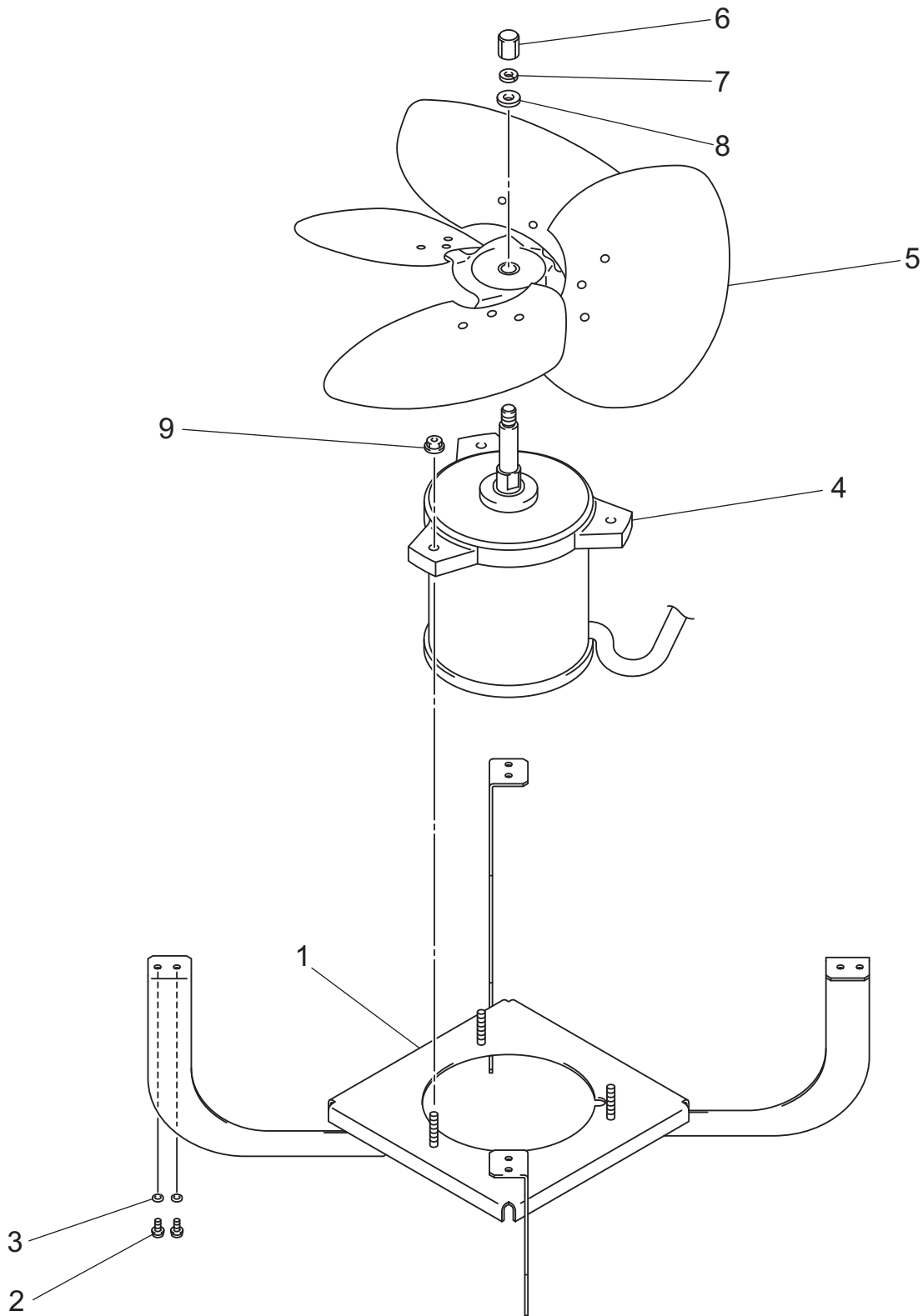
# CLASSIC 60



**CLASSIC 60**

<b>ILL. NO.</b>	<b>DESCRIPTION</b>	<b>PART NO.</b>	<b>QTY.</b>	<b>MODIFICATION DATE (mm/'yy)</b>	<b>REMARKS</b>
1	Frame Assy, Center	GX484300-3070	1		
2	Casing, Evaporator Fan	GX484260-0490	1		
3	Stay Assy	GX484330-0651	1		
4	Motor, Evaporator	484211-0851	1		
5	Ring	484381-0201	1		
6	Fan	484221-0340	1		
7	Nut, Bag	481216-0020	1		M12, For Left Screw
8	Washer, Wave	949017-1270	1		
9	Washer, Plate	90200-13001	1		
10	Bolt w/Washer	91478-10251	4		M10×1.25, L=25
11	Screw, Stop	949003-1440	1		M8
12	Screw	949006-3250	4		M4×0.7, L=10
13	Nut	92150-08081	8		M8×1.25
14	Nut	92150-10101	4		M10×1.25

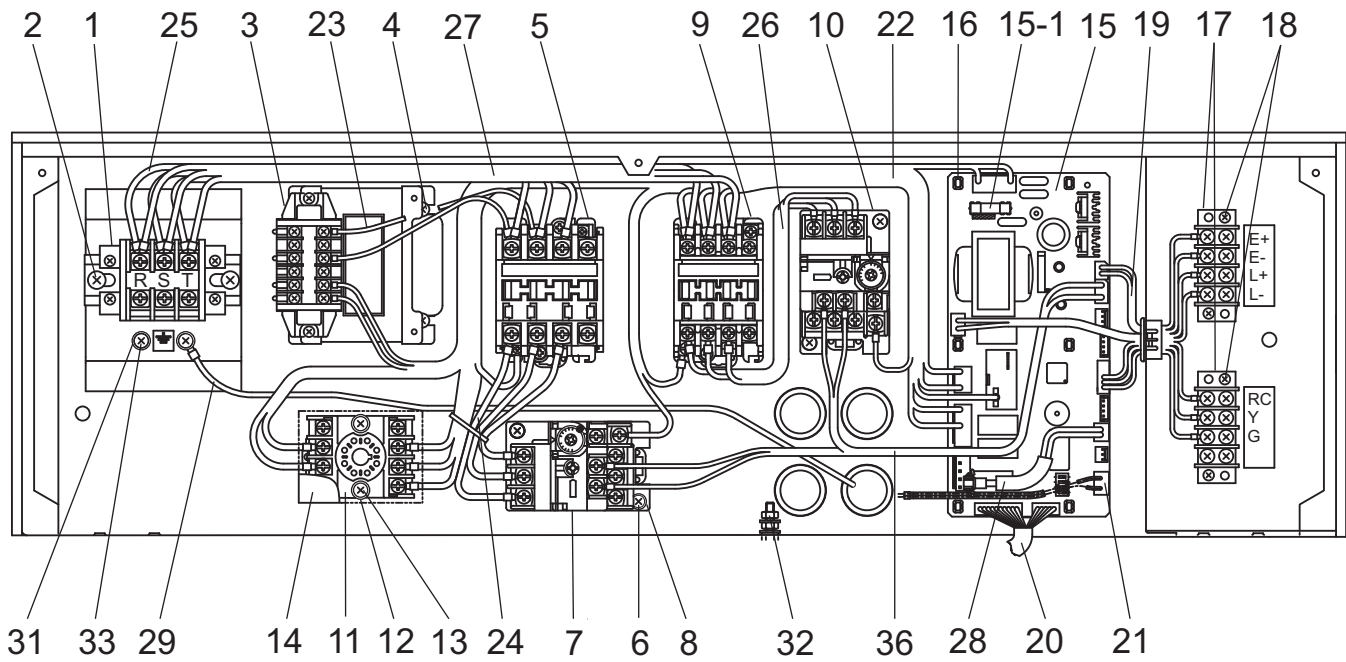
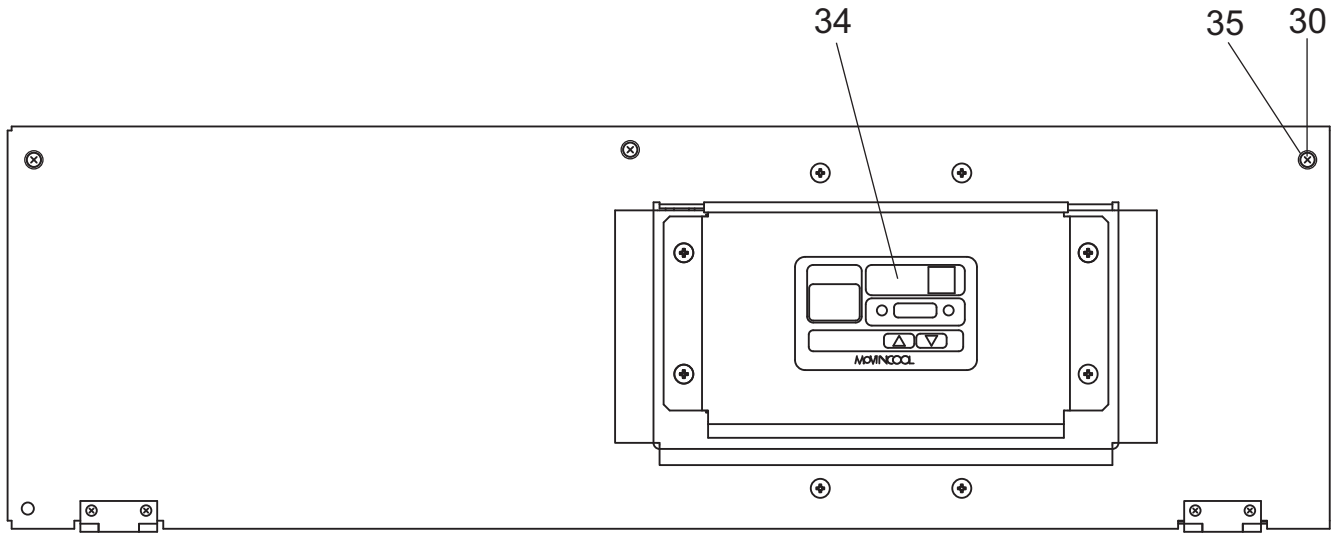
# CLASSIC 60



**CLASSIC 60**

<b>ILL. NO.</b>	<b>DESCRIPTION</b>	<b>PART NO.</b>	<b>QTY.</b>	<b>MODIFICATION DATE (mm/'yy)</b>	<b>REMARKS</b>
1	Stay Sub-Assy	484330-0390	1		
2	Bolt w/Washer	91570-06147	8		M6×1, L=14
3	Washer, Toothed	949016-0120	8		
4	Motor, Condenser	484211-0843	1		
5	Fan	484221-0080	1		
6	Nut, Bag	481216-0020	1		M12, For Left Screw
7	Washer, Steel Plate	949011-4010	1		
8	Washer, Wave	949017-1270	1		
9	Nut	92150-08081	3		M8×1.25

# CLASSIC 60



**CLASSIC 60**

ILL. NO.	DESCRIPTION	PART NO.	QTY.	MODIFICATION DATE (mm/'yy)	REMARKS
1	Terminal Block	484503-0260	1		(TB1), For Power Cord
2	Screw	949006-3230	2		M5×0.8, L=10
3	Transformer Assy	480819-0070	1		90VA (TF)
4	Screw	949006-3250	5		M4×0.7, L=10
5	Relay, Compressor	484531-0850	1		(MCC)
6	Screw	949006-3280	10		M4×0.7, L=18
7	Overcurrent Relay, Condenser Fan	484505-0400	1		(OCF2)
8	Washer, Plate	90200-04001	8		
9	Relay, Fan Motor	484531-0350	1		(MCF), For Evaporator
10	Overcurrent Relay, Evaporator Fan	484505-0410	1		(OCF1)
11	Terminal Block	GX484503-0900	1		For Relay (RPHR)
12	Washer, Plate	90200-04331	2		
13	Bolt	480919-0740	2		M4×0.7, L=25
14	Relay, Reverse Phase Protector	GX484531-0880	1		(RPHR)
15	Controller Assy	484500-3710	1		(RB), w/ILL.NO.15-1
15-1	Fuse	481936-0140	1		5A, 250V 5 Pieces Per Package
16	Support	482125-3170	6		
17	Terminal Block	GX484503-0840	2		For Input/Output Signal (TB2)
18	Screw	91310-03161	4		M3×0.5, L=16
19	Wire Assy	481950-0531	1		(RB)↔(TB2)
20	Wire Assy	481950-0561	1		(RB)↔Operation Panel
21	Wire Assy	481950-0600	1		(RB)↔(HPS)
22	Wire Assy	481950-0662	1		(RB)↔(RPHR)
23	Wire Assy	481950-0670	1		(MCC)↔(TF)
24	Wire Assy	481950-0681	1		(MCC)↔(OCF2)
25	Wire Assy	481950-0690	1		(TB1)↔(MCC)
26	Wire Assy	481950-0701	1		(MCF)↔(OCF1)
27	Wire Assy	481950-0710	1		(TB1)↔(MCF)
28	Wire Assy	481950-0720	1		(RB)↔(RTS)
29	Wire Assy	484932-0482	1		For Ground
30	Washer, Toothed	949016-0230	6		For Screw w/Washer (ILL.NO.37)
31	Washer, Plate	90201-04300	5		
32	Nut	91161-04320	2		M4×0.7
33	Screw	91051-04100	2		M4×0.7, L=10, For Ground
34	Switch Assy	GX484560-2130	1		Operation Panel & PCB
35	Screw w/Washer	91370-04107	3		M4×0.7, L=10
36	Wire Assy	481950-0542	1		(RB)↔(OCF1), (OCF2)

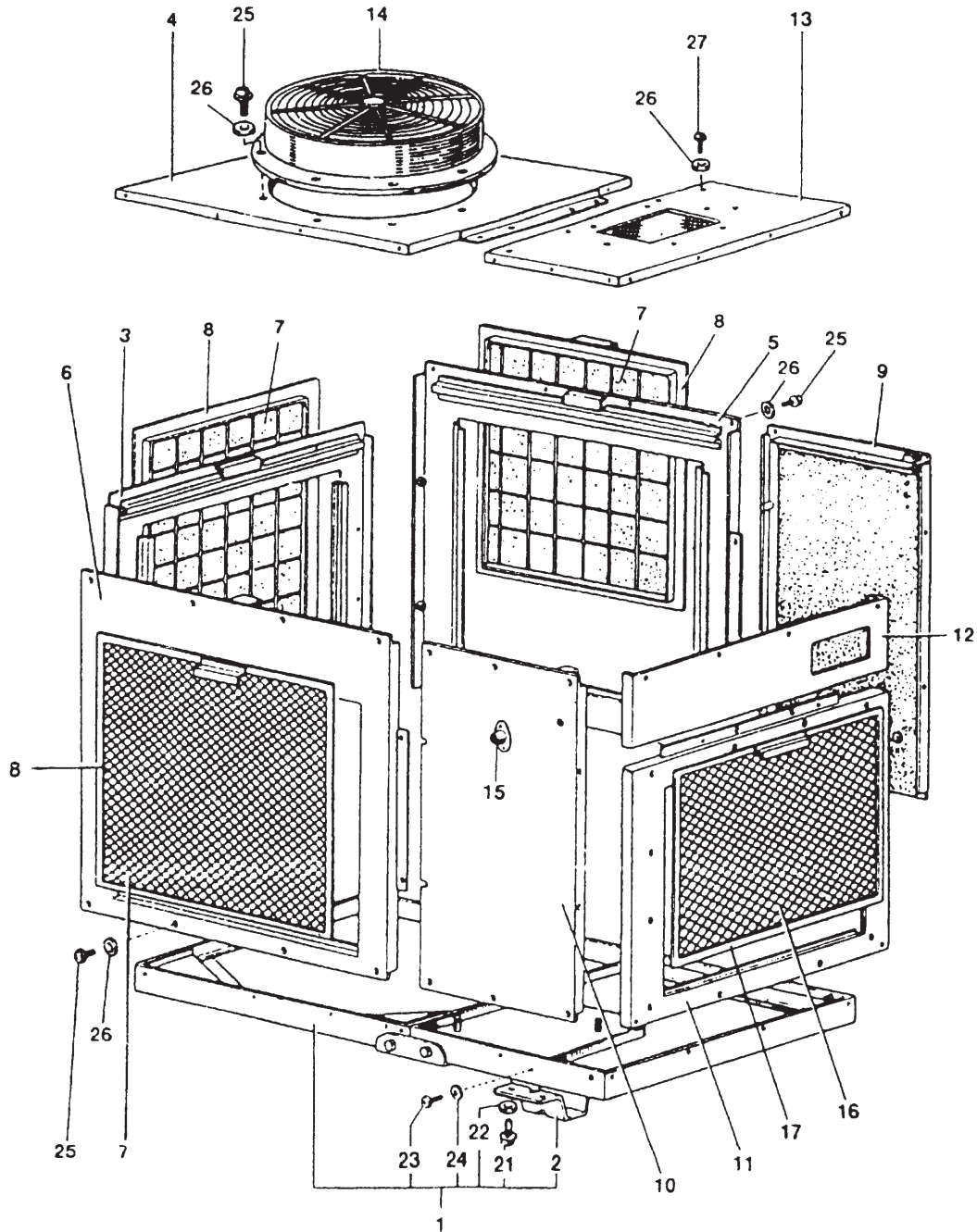
[ Memo ]

# **CLASSIC 60**

Unit Part No: 484000-1132  
484000-1131

Production Period: From October 1999 (1099)  
To March 2009 (0309)

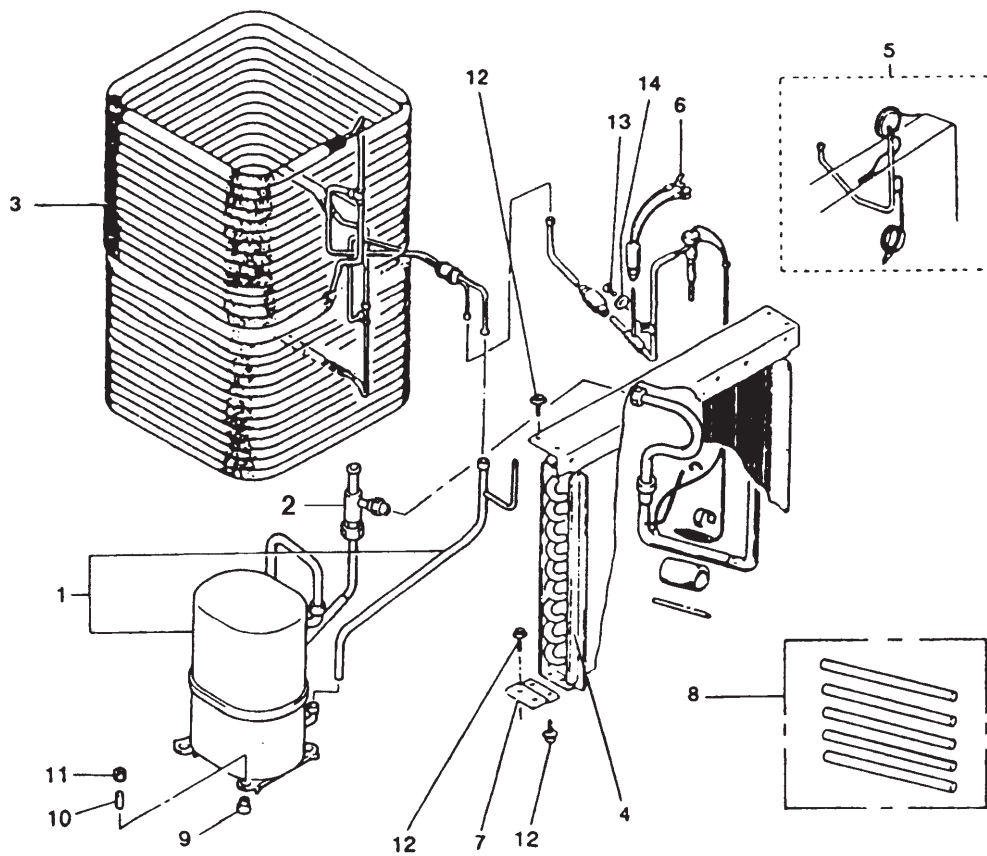
# CLASSIC 60



**CLASSIC 60**

ILL. NO.	DESCRIPTION	PART NO.	QTY.	MODIFICATION DATE (mm/'yy)	REMARKS
	Unit Assy				
1	Frame, Base				No Supply
2	Leg	484921-0072	4		
3	Panel, Rear	484410-2861	1		
4	Panel, Condenser, Upper	484420-0160	1		
5	Panel, Condenser, Right	484410-2841	1		
6	Panel, Condenser, Left	484410-2851	1		
7	Filter, Condenser	484401-0861	3		
8	Frame, Condenser Filter	484300-0210	3		
9	Panel, Right	484410-2870	1		
10	Panel, Left	484410-2880	1		w/ILL.15
11	Panel, Evaporator	484410-2890	1		
12	Panel, Front	484410-2900	1		
13	Panel, Evaporator, Upper	484420-0170	1		
14	Grille, Exhaust	484370-0030	1		
15	Conduit	479748-0020	1		
16	Filter, Evaporator	484401-0871	1		
17	Frame, Evaporator Filter	484300-0220	1		
21	Bolt, w/Washer	91470-10207	16		M10, L20
22	Washer, Toothed	949016-1030	16		M10
23	Screw	90051-06160	1		M6, L16
24	Washer, Plate	90201-06400	1		
25	Bolt, w/Washer	91570-06147	69		M6, L14
26	Washer, Toothed	949016-0120	81		M6
27	Bolt, w/Washer	91570-06357	12		M6, L35

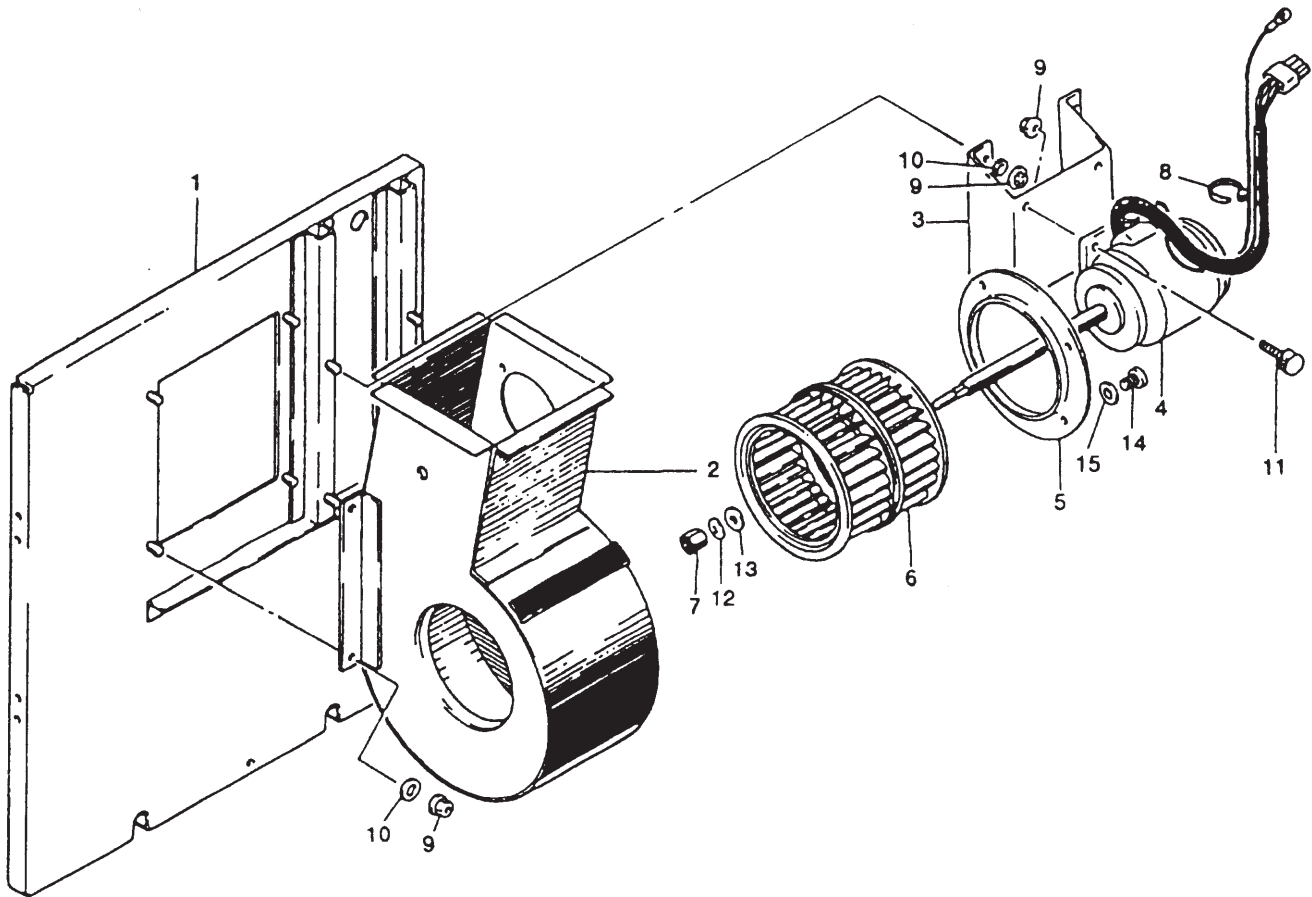
# CLASSIC 60



**CLASSIC 60**

<b>ILL. NO.</b>	<b>DESCRIPTION</b>	<b>PART NO.</b>	<b>QTY.</b>	<b>MODIFICATION DATE (mm/'yy)</b>	<b>REMARKS</b>
1	Compressor Assy	484650-0930	1		
2	Pressure Regulator	484782-0050	1		
3	Core Assy, Condenser	484600-0900	1		
4	Core Assy, Evaporator	484600-0910	1		w/ILL.6
5	Pipe Assy, Capillary	484640-0150	1		
6	High Pressure Switch	484660-0272	1		
7	Bracket	484321-0400	2		
8	Pipe, Charging	484800-0440	1		For Charging, 5 Pieces Per Package
9	Cushion	484904-0170	4		
10	Collar	484915-0230	4		
11	Nut, Hexagon	90190-08651	4		M8, Hex.Size 12
12	Bolt, w/Washer	91570-06147	6		M6, L14
13	Screw	91051-04100	1		M4, L10
14	Washer, Plate	90201-04300	1		

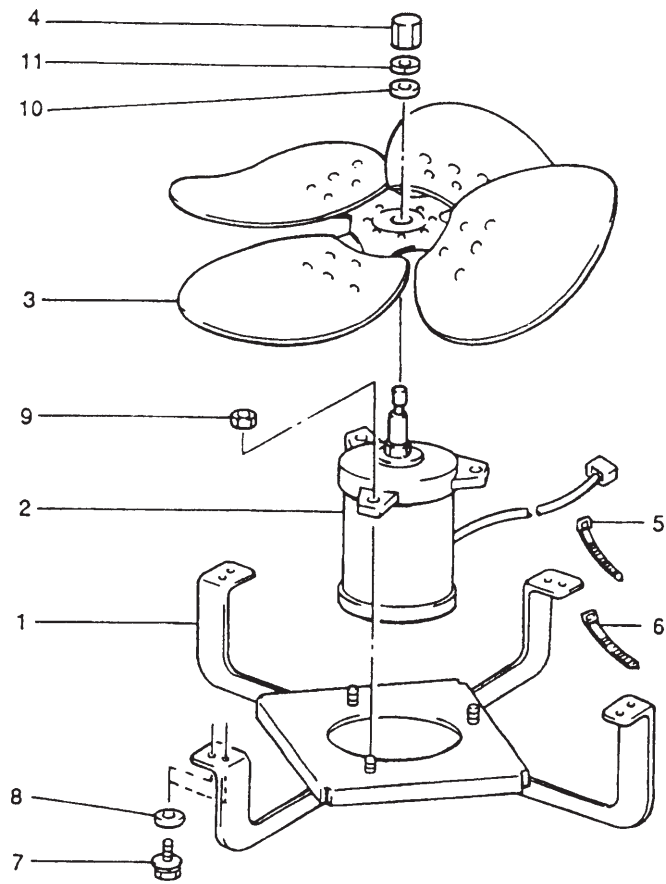
# CLASSIC 60



**CLASSIC 60**

ILL. NO.	DESCRIPTION	PART NO.	QTY.	MODIFICATION DATE (mm/'yy)	REMARKS
1	Frame	484300-0880	1		
2	Casing, Evaporator Fan	484260-0210	1		
3	Stay	484330-0401	1		
4	Motor	484211-0851	1		
5	Ring	484381-0201	1		
6	Fan	484221-0340	1		
7	Nut, Bag	481216-0020	1		Hex.Size 19
8	Band	949821-0030	2		L100
9	Nut, Flange	92150-08081	12		Hex.Size 12, M8
10	Washer, Toothed	949016-0320	8		M8
11	Bolt, w/Washer	91478-10251	4		M8, L25, Hex.Size 12
12	Washer, Spring	949017-1270	1		T1.2
13	Washer, Plate	90200-13001	1		M13
14	Screw	949006-3250	4		M4, L10
15	Washer, Toothed	949016-0230	4		M4

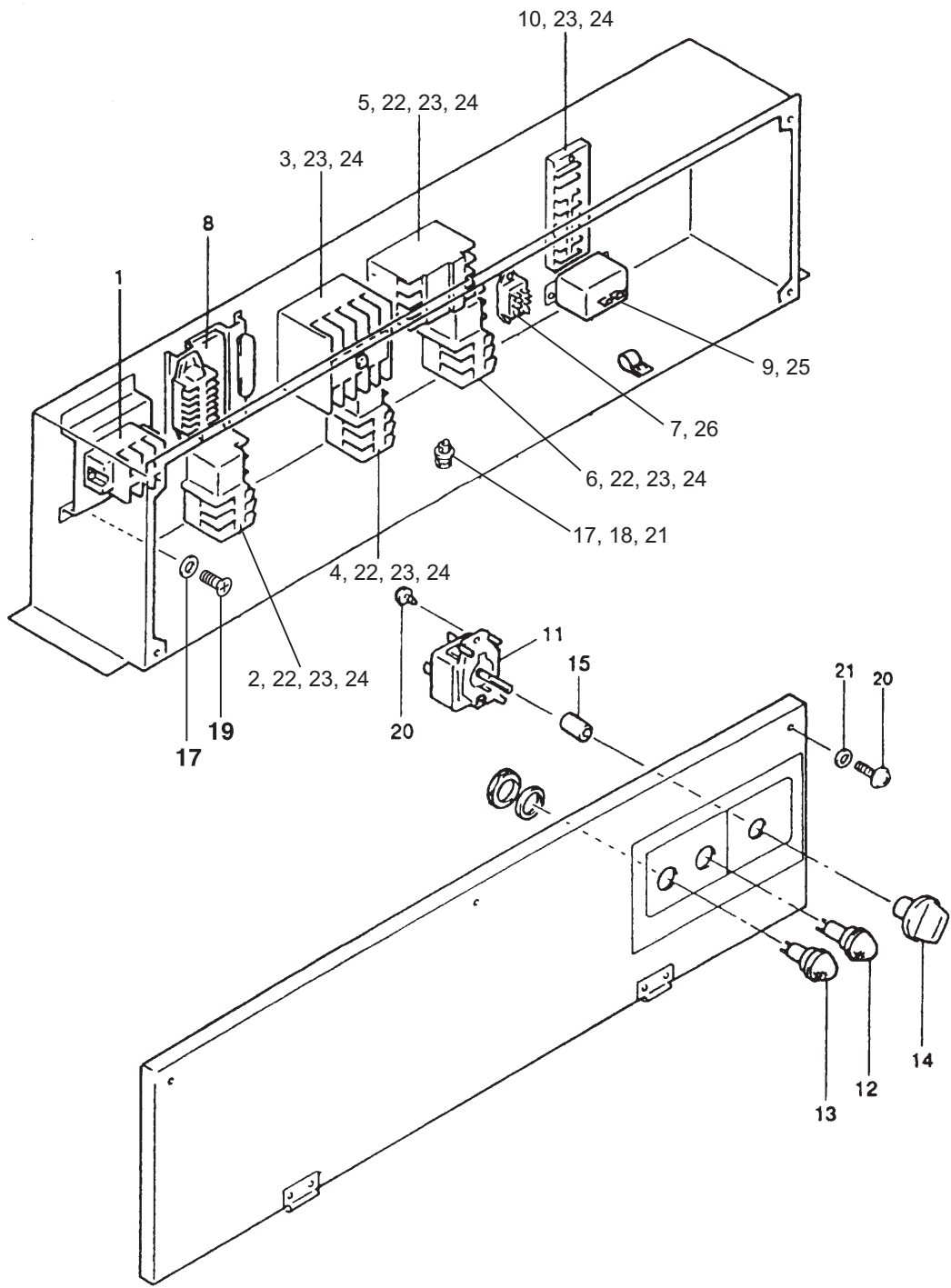
# CLASSIC 60



**CLASSIC 60**

<b>ILL. NO.</b>	<b>DESCRIPTION</b>	<b>PART NO.</b>	<b>QTY.</b>	<b>MODIFICATION DATE (mm/'yy)</b>	<b>REMARKS</b>
1	Bracket, Motor	484330-0390	1		
2	Motor	484211-0843	1		
3	Fan	484221-0080	1		
4	Nut, Special	481216-0020	1		Hex.Size 19
5	Band	949821-0030	1		L100
6	Clip, Middle	481951-0020	3		L150
7	Screw, w/Washer	91570-06147	8		M6, L14
8	Washer, Toothed	949016-0120	8		M6
9	Nut, Flange	92150-08081	3		M8, Hex.Size 12
10	Washer, Plate	949011-4010	1		
11	Washer, Spring	949017-1270	1		

# CLASSIC 60



**CLASSIC 60**

ILL. NO.	DESCRIPTION	PART NO.	QTY.	MODIFICATION DATE (mm/'yy)	REMARKS
	Controller Assy				
1	Terminal Block	484503-0260	1		(TB1), For Power Cord
2	Overcurrent Relay, Compressor	484505-0300	1	-10/'07	
		484505-0390	1	11/'07-	
3	Relay, Compressor	484531-0180	1	-10/'07	
		484531-0850	1	11/'07-	
4	Overcurrent Relay, Condenser Fan	484505-0230	1	-10/'07	
		484505-0400	1	11/'07-	
5	Relay, Fan Motor	484531-0350	1		
6	Overcurrent Relay, Evaporator Fan	484505-0270	1	-10/'07	
		484505-0410	1	11/'07-	
7	Relay, Auxiliary	484531-0170	1		
8	Transformer	480819-0070	1		
9	Thermostat	484504-0020	1		
10	Terminal Block	484503-0051	1		(TB2), For Branch Circuit
11	Switch Assy	484560-1760	1	-05/'05	
		484560-1740	1	06/'05-	
12	Red Lamp	484933-0120	1		
13	Clear Lamp	484933-0110	1		
14	Knob, Control Switch	484923-0150	1		
15	Clip	484917-0131	1		
16	Cap, Insulating	484922-0140	1		
17	Washer, Plate	90201-04300	4		
18	Nut, Hexagon	91161-04320	2		M4
19	Screw, Crossrecess Pan	91051-04100	2		M4, L10
20	Screw, w/Washer	91370-04087	5		M4, L8
21	Washer, Toothed	949016-0230	6		M4
22	Washer, Plate	90200-04001	8		
23	Screw	949006-3250	5		M4, L10
24	Screw	949006-3280	12		M4, L18
25	Bolt, w/Washer	949047-0220	2		M4, L8, Hex.Size 7
26	Screw	949006-4440	2		M3, L8

***DENSO***  
DENSO SALES CALIFORNIA, INC.

Long Beach, CA 90810  
[www.movincool.com](http://www.movincool.com)

Second Issue: May 2011