



Submittal Data Sheet

R-32 Daikin Aurora 0.75 Ton Ducted Concealed Heat Pump System
FDMA09AVJU9RXP09AVJU9

FEATURES

- Automatic defrosting & Automatic cooling/heating change over
- Auto Restart after Power failure
- Operation Range—Cooling (50°F - 114.8°F)
- Low temperature cooling operation down to -4°F (-20°C) with wind baffle and field settings
- Operating Range - Heating (-13.8°F - 64.4°F)
- 12-year limited parts and compressor warranty with online registration
- 5-year limited parts warranty for commercial applications
- Inverter controlled Swing compressor with Reluctance DC motor
- Auto Fan Speed
- 3-Step Switchable Fan speed
- Quick Warming function
- Program dry operation
- Fan-only mode
- ECONO operation
- Titanium Apatite deodorizing filter
- Filter Cleaning Indicator
- Anti-corrosion treatment on outdoor heat exchanger
- Factory charged for up to 49.2 ft of piping length
- Built in refrigeration detection system

BENEFITS

- Inverter and PAM control technologies optimize energy use, delivering efficient performance and reduced electricity consumption
- Concealed systems preserve interior aesthetics by eliminating bulky wall-mounted unit ideal for minimalist and design-focused homes
- Concealed ducted mini splits offer zoned comfort with minimal ductwork, preserving the architectural integrity of historic homes
- Concealed ducted systems efficiently condition large or multi-room spaces using flexible ductwork, offering seamless comfort without multiple wall units
- Compact concealed systems deliver efficient, quiet comfort in small apartments without occupying valuable walls or floor space
- Flexible installation options—either-side drain, and factory charged for up to 49.2 ft. of piping length —simplify setup and reduce labor costs
- Concealed systems maintain visual harmony by delivering discreet comfort without distracting from high-end displays or artwork.
- Concealed systems deliver efficient climate control while preserving a clean, professional look free from exposed HVAC components
- Concealed ducted mini-splits offer a space-saving, energy-efficient solution for individual climate control in apartments and condominiums
- Concealed systems provide quiet, zoned climate control with advanced filtration—ideal for maintaining comfort and air quality in hospitals and hotels

INDOOR UNIT



OUTDOOR UNIT





Submittal Data Sheet

R-32 Daikin Aurora 0.75 Ton Ducted Concealed Heat Pump System

FDMA09AVJU9RXP09AVJU9

SYSTEM PERFORMANCE

Indoor Unit Model No.	FDMA09AVJU9	Indoor Unit Name:	R-32 0.75 Ton Ducted Concealed Indoor Unit
Outdoor Unit Model No.	RXP09AVJU9	Outdoor Unit Name:	Daikin Aurora R-32 0.75 Ton Heat pump outdoor unit
Rated Cooling Capacity (Btu/hr):	9,000	Rated Cooling Conditions:	Indoor (°F DB/WB): 80 / 67 Ambient (°F DB/WB): 95 / 75
Sensible Capacity (Btu/hr):	6,910	Rated Piping Length(ft):	25
Max/Min Cooling Capacity (Btu/hr):	9,400 / 4,400	Rated Height Difference (ft):	0.00
Cooling Input Power (kW):	0.860	Heating Input Power (kW):	1.29
SEER2 (Non-Ducted/Ducted):	/ 16.00	HSPF2 (Non-Ducted/Ducted):	/ 9.0
EER2 (Non-Ducted/Ducted):	/ 11.10	Heating COP (Non-Ducted/Ducted):	3.0 /
Rated Heating Capacity (Btu/hr):	10,900	Rated Heating Conditions:	Indoor (°F DB/WB): 70 / 60 Ambient (°F DB/WB): 47 / 43
Max/Min Heating Capacity (Btu/hr):	12,800 / 4,400		

SYSTEM DETAILS

Refrigerant Type:	R-32	Cooling Operation Range (°F DB):	50 - 115
Holding Refrigerant Charge (lbs):	1.74	Heating Operation Range (°F WB):	-14 - 64
Additional Charge (oz/ft):	0.22	Max. Pipe Length (Vertical) (ft):	49
Pre-charge Piping (Length) (ft):	49	Cooling Range w/Baffle (°F DB):	-4 - 115
Max. Pipe Length (Total) (ft):	66		
Max Height Separation (Ind to Ind ft):	0		

Submittal Data Sheet

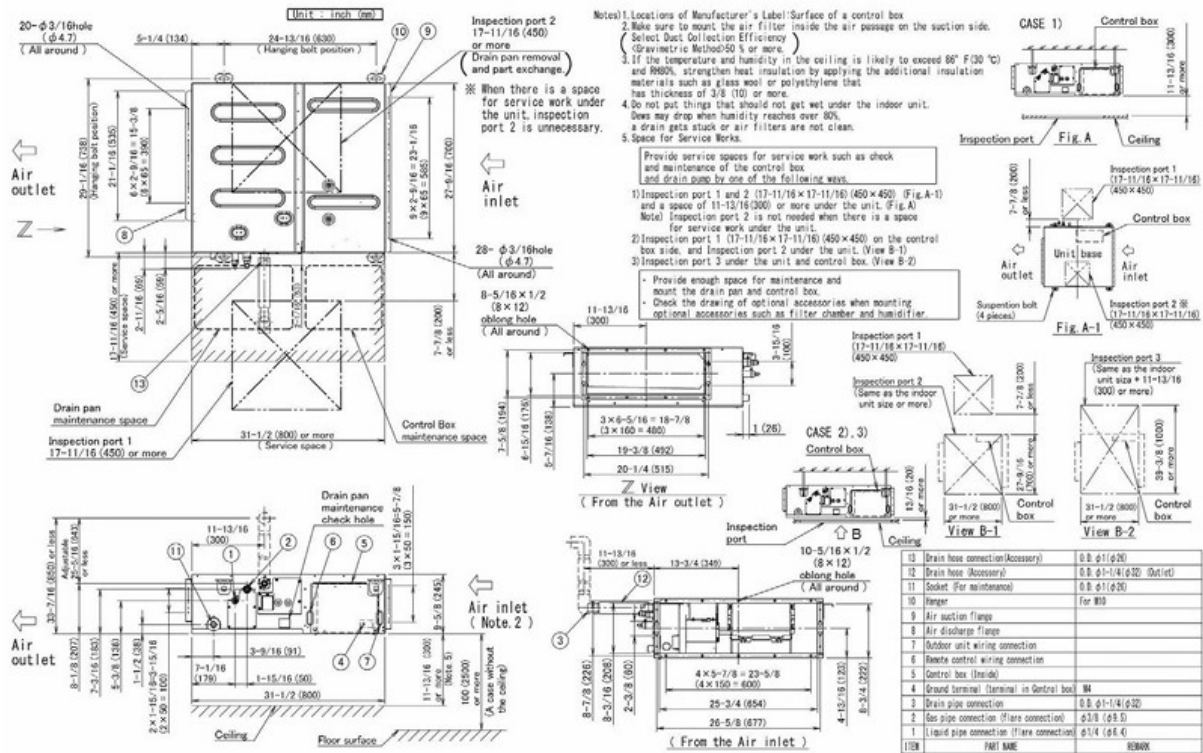
R-32 Daikin Aurora 0.75 Ton Ducted Concealed Heat Pump System
FDMA09AVJU9RXP09AVJU9

INDOOR UNIT DETAILS

Power Supply (V/Hz/Ph):	208-230 / 60 / 1	Airflow Rate (H/M/L) (CFM):	401/338/279
Power Supply Connections:		Moisture Removal (Gal/hr):	
Min. Circuit Amps MCA (A):		Gas Pipe Connection (inch):	3/8
Max Overcurrent Protection (MOP) (A):		Liquid Pipe Connection (inch):	1/4
Dimensions (HxWxD) (in):	9-5/8 x 27-9/16 x 31-1/2	Condensate Connection (inch):	1
Net Weight (lb):	64	Sound Pressure (H) (dBA):	32
Ext. Static Pressure (Rated/Max) (inWg):	0.6 /	Sound Power Level (dBA):	

DIMENSIONAL DRAWING - INDOOR UNIT

FDMA09/12AVJU9



3D112918D



Submittal Data Sheet

R-32 Daikin Aurora 0.75 Ton Ducted Concealed Heat Pump System

FDMA09AVJU9RXP09AVJU9

INDOOR ACCESSORIES

PART NUMBER	DESCRIPTION	INCLUDED
-------------	-------------	----------

BRC1NRV71	R32 Navigation Remote Controller	No
DCS302C71	Centralized Controller	No
DST301BA61	Schedule Timer	No
KRCS01-6B	Remote Sensor	No
KRP1C76	Wiring Adapter PCB	No

OUTDOOR ACCESSORIES

PART NUMBER	DESCRIPTION	INCLUDED
-------------	-------------	----------

KEH068A41	Drain Pan Heater	No
KKG067A41	Back protection wire net (09 & 12)	No
KKP937A4	Drain Plug for OD Unit	Yes
KPS067A41	Snow hood (intake side plate) (09 & 12)	No
KPS067A42	Snow hood (intake rear plate) (09 & 12)	No
KPS067A44	Snow hood (outlet) (09 & 12)	No
KPW937F4	Air direction adjustment grille (09 & 12)	No



Submittal Data Sheet

R-32 Daikin Aurora 1 Ton Ducted Concealed Heat Pump System
FDMA12AVJU9RXP12AVJU9

FEATURES

- Automatic defrosting & Automatic cooling/heating change over
- Auto Restart after Power failure
- Operation Range—Cooling (50°F - 114.8°F)
- Low temperature cooling operation down to -4°F (-20°C) with wind baffle and field settings
- Operating Range - Heating (-13.8°F - 64.4°F)
- 12-year limited parts and compressor warranty with online registration
- 5-year limited parts warranty for commercial applications
- Inverter controlled Swing compressor with Reluctance DC motor
- Auto Fan Speed
- 3-Step Switchable Fan speed
- Quick Warming function
- Program dry operation
- Fan-only mode
- ECONO operation
- Filter Cleaning Indicator
- Anti-corrosion treatment on outdoor heat exchanger
- Factory charged for up to 49.2 ft of piping length
- Built in refrigeration detection system

BENEFITS

- Inverter and PAM control technologies optimize energy use, delivering efficient performance and reduced electricity consumption
- Concealed systems preserve interior aesthetics by eliminating bulky wall-mounted unit ideal for minimalist and design-focused homes
- Concealed ducted mini splits offer zoned comfort with minimal ductwork, preserving the architectural integrity of historic homes
- Concealed ducted systems efficiently condition large or multi-room spaces using flexible ductwork, offering seamless comfort without multiple wall units
- Compact concealed systems deliver efficient, quiet comfort in small apartments without occupying valuable walls or floor space
- Flexible installation options—either-side drain, and factory charged for up to 49.2 ft. of piping length —simplify setup and reduce labor costs
- Concealed systems maintain visual harmony by delivering discreet comfort without distracting from high-end displays or artwork.
- Concealed systems deliver efficient climate control while preserving a clean, professional look free from exposed HVAC components
- Concealed ducted mini-splits offer a space-saving, energy-efficient solution for individual climate control in apartments and condominiums
- Concealed systems provide quiet, zoned climate control with advanced filtration—ideal for maintaining comfort and air quality in hospitals and hotels

INDOOR UNIT



OUTDOOR UNIT





Submittal Data Sheet

R-32 Daikin Aurora 1 Ton Ducted Concealed Heat Pump System

FDMA12AVJU9RXP12AVJU9

SYSTEM PERFORMANCE

Indoor Unit Model No.	FDMA12AVJU9	Indoor Unit Name:	R-32 1 Ton Ducted Concealed Indoor Unit
Outdoor Unit Model No.	RXP12AVJU9	Outdoor Unit Name:	Daikin Aurora R-32 1 Ton Heat Pump Outdoor Unit
Rated Cooling Capacity (Btu/hr):	10,800	Rated Cooling Conditions:	Indoor (°F DB/WB): 80 / 67 Ambient (°F DB/WB): 95 / 75
Sensible Capacity (Btu/hr):	8,330	Rated Piping Length(ft):	25
Max/Min Cooling Capacity (Btu/hr):	12,400 / 4,400	Rated Height Difference (ft):	0.00
Cooling Input Power (kW):	1.250	Heating Input Power (kW):	1.72
SEER2 (Non-Ducted/Ducted):	/ 16.00	HSPF2 (Non-Ducted/Ducted):	/ 9.0
EER2 (Non-Ducted/Ducted):	/ 10.00	Heating COP (Non-Ducted/Ducted):	3.0 /
Rated Heating Capacity (Btu/hr):	12,500	Rated Heating Conditions:	Indoor (°F DB/WB): 70 / 60 Ambient (°F DB/WB): 47 / 43
Max/Min Heating Capacity (Btu/hr):	17,000 / 4,400		

SYSTEM DETAILS

Refrigerant Type:	R-32	Cooling Operation Range (°F DB):	50 - 115
Holding Refrigerant Charge (lbs):	1.74	Heating Operation Range (°F WB):	-14 - 64
Additional Charge (oz/ft):	0.22	Max. Pipe Length (Vertical) (ft):	49
Pre-charge Piping (Length) (ft):	49	Cooling Range w/Baffle (°F DB):	-4 - 115
Max. Pipe Length (Total) (ft):	66		
Max Height Separation (Ind to Ind ft):	0		

Submittal Data Sheet

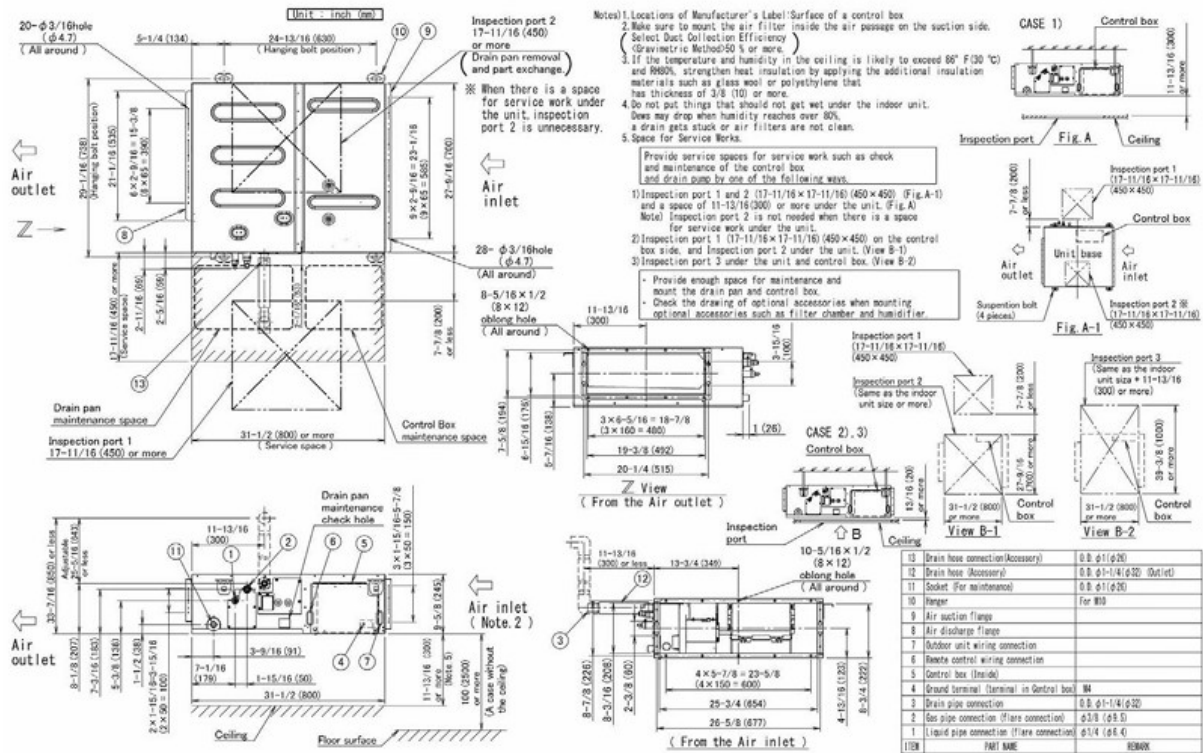
R-32 Daikin Aurora 1 Ton Ducted Concealed Heat Pump System
FDMA12AVJU9RXP12AVJU9

INDOOR UNIT DETAILS

Power Supply (V/Hz/Ph):	208/230 / 60 / 1	Airflow Rate (H/M/L) (CFM):	440/367/299
Power Supply Connections:		Moisture Removal (Gal/hr):	
Min. Circuit Amps MCA (A):		Gas Pipe Connection (inch):	3/8
Max Overcurrent Protection (MOP) (A):		Liquid Pipe Connection (inch):	1/4
Dimensions (HxWxD) (in):	9-5/8 x 27-9/16 x 31-1/2	Condensate Connection (inch):	1
Net Weight (lb):	64	Sound Pressure (H) (dBA):	33
Ext. Static Pressure (Rated/Max) (inWg):	0.6 /	Sound Power Level (dBA):	

DIMENSIONAL DRAWING - INDOOR UNIT

FDMA09/12AVJU9



3D112918D



Submittal Data Sheet

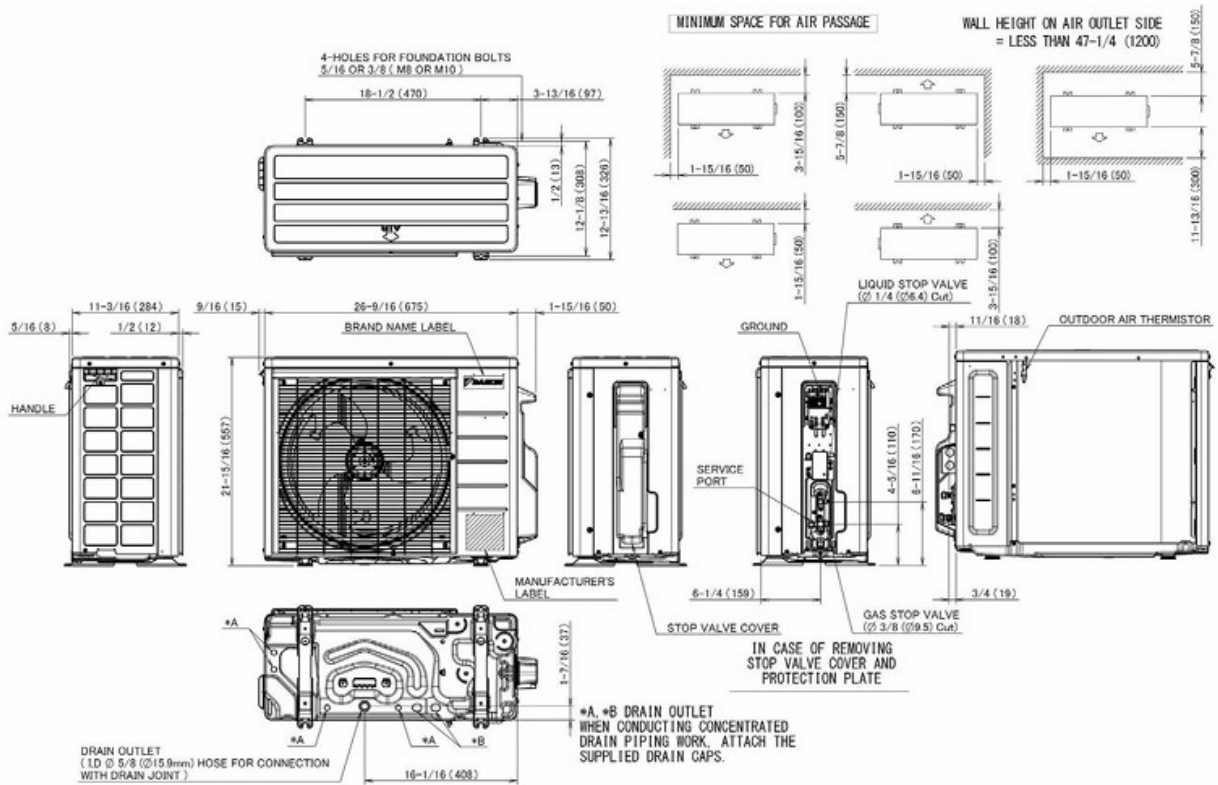
R-32 Daikin Aurora 1 Ton Ducted Concealed Heat Pump System
FDMA12AVJU9RXP12AVJU9

OUTDOOR UNIT DETAILS

Power Supply (V/Hz/Ph):	208/230 / 60 / 1	Compressor Stage:	Inverter
Power Supply Connections:		Capacity Control Range (%):	-
Min. Circuit Amps MCA (A):	14.6	Airflow Rate (H/M) (CFM):	1126/1,126
Max Overcurrent Protection (MOP) (A):	15	Gas Pipe Connection (inch):	3/8
Max Starting Current MSC(A):		Liquid Pipe Connection (inch):	1/4
Rated Load Amps RLA(A):		Sound Pressure (H) (dBA):	50
Dimensions (HxWxD) (in):	21-15/16 x 26-9/16 x 11-3/16	Sound Power Level (dBA):	
Net Weight (lb):	72		

DIMENSIONAL DRAWING - OUTDOOR UNIT

RXP09/12AVJU9



3D152019



Submittal Data Sheet

R-32 Daikin Aurora 1 Ton Ducted Concealed Heat Pump System

FDMA12AVJU9RXP12AVJU9

INDOOR ACCESSORIES

PART NUMBER	DESCRIPTION	INCLUDED
-------------	-------------	----------

BRC1NRV71	R32 Navigation Remote Controller	No
DCS302C71	Centralized Controller	No
DST301BA61	Schedule Timer	No
KRCS01-6B	Remote Sensor	No
KRP1C76	Wiring Adapter PCB	No

OUTDOOR ACCESSORIES

PART NUMBER	DESCRIPTION	INCLUDED
-------------	-------------	----------

KEH068A41	Drain Pan Heater	No
KKG067A41	Back protection wire net (09 & 12)	No
KKP937A4	Drain Plug for OD Unit	Yes
KPS067A41	Snow hood (intake side plate) (09 & 12)	No
KPS067A42	Snow hood (intake rear plate) (09 & 12)	No
KPS067A44	Snow hood (outlet) (09 & 12)	No
KPW937F4	Air direction adjustment grille (09 & 12)	No



Submittal Data Sheet

R-32 Daikin Aurora 1.25 Ton Ducted Concealed Heat Pump System
FDMA15AVJU9RXP15AVJU9

FEATURES

- Automatic defrosting & Automatic cooling/heating change over
- Auto Restart after Power failure
- Operation Range—Cooling (50°F - 114.8°F)
- Low temperature cooling operation down to -4°F (-20°C) with wind baffle and field settings
- Operating Range - Heating (-13.8°F - 64.4°F)
- 12-year limited parts and compressor warranty with online registration
- 5-year limited parts warranty for commercial applications
- Inverter controlled Swing compressor with Reluctance DC motor
- Auto Fan Speed
- 3-Step Switchable Fan speed
- Quick Warming function
- Program dry operation
- Fan-only mode
- ECONO operation
- Filter Cleaning Indicator
- Anti-corrosion treatment on outdoor heat exchanger
- Factory charged for up to 49.2 ft of piping length
- Built in refrigeration detection system

BENEFITS

- Inverter and PAM control technologies optimize energy use, delivering efficient performance and reduced electricity consumption
- Concealed systems preserve interior aesthetics by eliminating bulky wall-mounted unit ideal for minimalist and design-focused homes
- Concealed ducted mini splits offer zoned comfort with minimal ductwork, preserving the architectural integrity of historic homes
- Concealed ducted systems efficiently condition large or multi-room spaces using flexible ductwork, offering seamless comfort without multiple wall units
- Compact concealed systems deliver efficient, quiet comfort in small apartments without occupying valuable walls or floor space
- Flexible installation options—either-side drain, and factory charged for up to 49.2 ft. of piping length —simplify setup and reduce labor costs
- Concealed systems maintain visual harmony by delivering discreet comfort without distracting from high-end displays or artwork.
- Concealed systems deliver efficient climate control while preserving a clean, professional look free from exposed HVAC components
- Concealed ducted mini-splits offer a space-saving, energy-efficient solution for individual climate control in apartments and condominiums
- Concealed systems provide quiet, zoned climate control with advanced filtration—ideal for maintaining comfort and air quality in hospitals and hotels

INDOOR UNIT



OUTDOOR UNIT





Submittal Data Sheet

R-32 Daikin Aurora 1.25 Ton Ducted Concealed Heat Pump System

FDMA15AVJU9RXP15AVJU9

SYSTEM PERFORMANCE

Indoor Unit Model No.	FDMA15AVJU9	Indoor Unit Name:	R-32 1.25 Ton Ducted Concealed Indoor Unit
Outdoor Unit Model No.	RXP15AVJU9	Outdoor Unit Name:	Daikin Aurora R-32 1.25 Ton Heat Pump Outdoor unit
Rated Cooling Capacity (Btu/hr):	14,400	Rated Cooling Conditions:	Indoor (°F DB/WB): 80 / 67 Ambient (°F DB/WB): 95 / 75
Sensible Capacity (Btu/hr):	11,230	Rated Piping Length(ft):	25
Max/Min Cooling Capacity (Btu/hr):	15,700 / 9,000	Rated Height Difference (ft):	0.00
Cooling Input Power (kW):	1.350	Heating Input Power (kW):	1.85
SEER2 (Non-Ducted/Ducted):	/ 18.00	HSPF2 (Non-Ducted/Ducted):	/ 9.2
EER2 (Non-Ducted/Ducted):	/ 11.80	Heating COP (Non-Ducted/Ducted):	3.0 /
Rated Heating Capacity (Btu/hr):	18,000	Rated Heating Conditions:	Indoor (°F DB/WB): 70 / 60 Ambient (°F DB/WB): 47 / 43
Max/Min Heating Capacity (Btu/hr):	18,500 / 9,000		

SYSTEM DETAILS

Refrigerant Type:	R-32	Cooling Operation Range (°F DB):	50 - 115
Holding Refrigerant Charge (lbs):	3.04	Heating Operation Range (°F WB):	-14 - 64
Additional Charge (oz/ft):	0.22	Max. Pipe Length (Vertical) (ft):	66
Pre-charge Piping (Length) (ft):	49	Cooling Range w/Baffle (°F DB):	-4 - 115
Max. Pipe Length (Total) (ft):	99		
Max Height Separation (Ind to Ind ft):	0		



Submittal Data Sheet

R-32 Daikin Aurora 1.25 Ton Ducted Concealed Heat Pump System

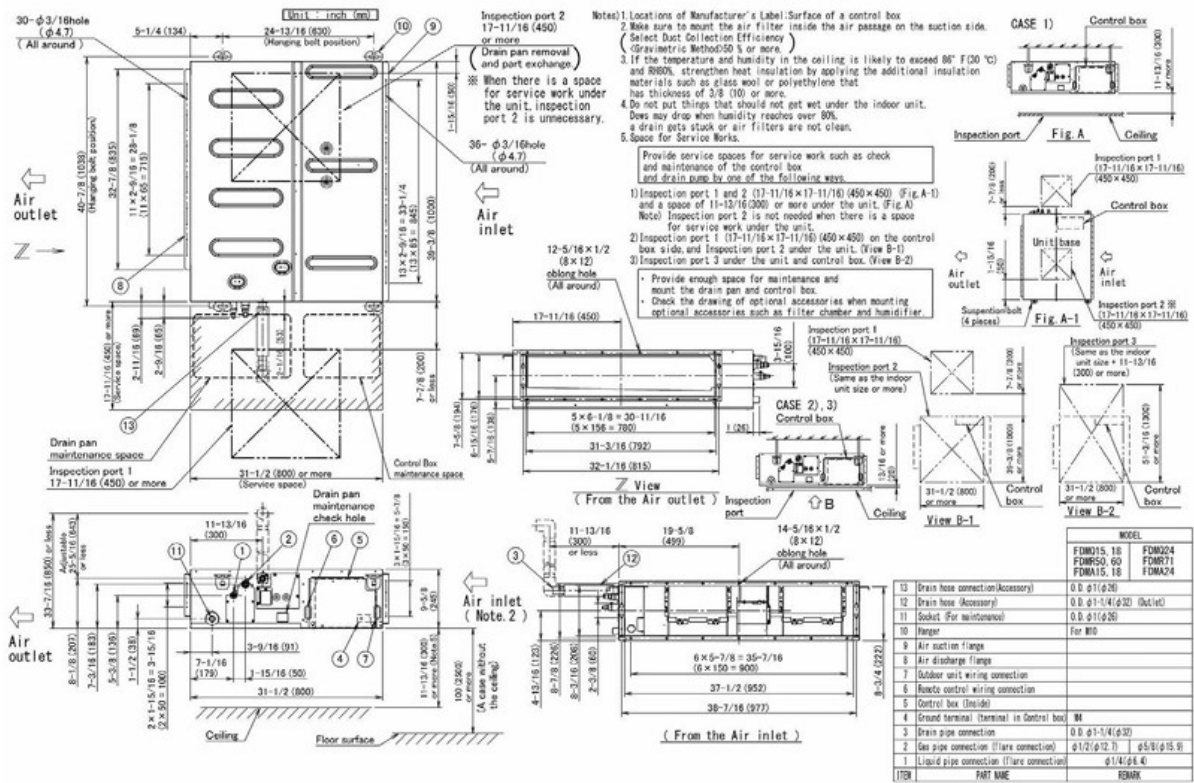
FDMA15AVJU9RXP15AVJU9

INDOOR UNIT DETAILS

Power Supply (V/Hz/Ph):	208/230 / 60 / 1	Airflow Rate (H/M/L) (CFM):	471/382/284
Power Supply Connections:		Moisture Removal (Gal/hr):	
Min. Circuit Amps MCA (A):		Gas Pipe Connection (inch):	1/2
Max Overcurrent Protection (MOP) (A):		Liquid Pipe Connection (inch):	1/4
Dimensions (HxWxD) (in):	9-5/8 x 39-3/8 x 31-1/2	Condensate Connection (inch):	1
Net Weight (lb):	82	Sound Pressure (H) (dBA):	34
Ext. Static Pressure (Rated/Max) (inWg):	0.6 /	Sound Power Level (dBA):	

DIMENSIONAL DRAWING - INDOOR UNIT

FDMA15/18/24AVJU9



3D112919C



Submittal Data Sheet

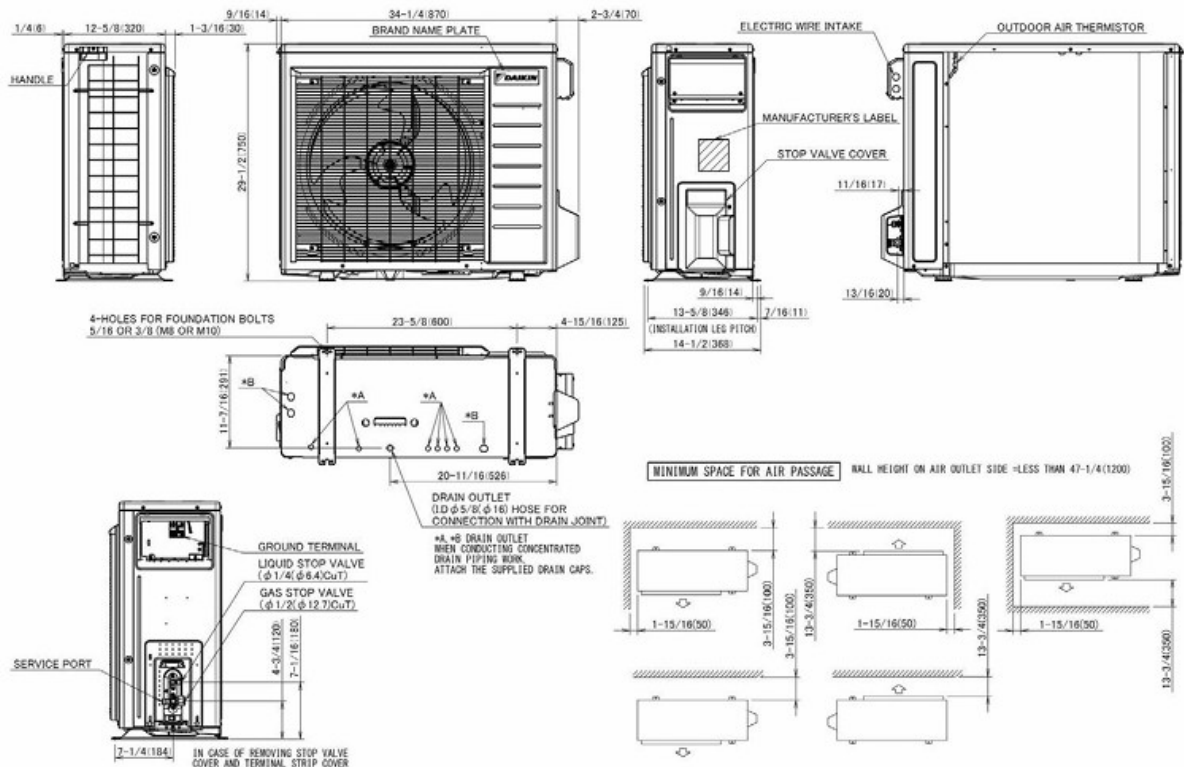
R-32 Daikin Aurora 1.25 Ton Ducted Concealed Heat Pump System
FDMA15AVJU9RXP15AVJU9

OUTDOOR UNIT DETAILS

Power Supply (V/Hz/Ph):	208/230 / 60 / 1	Compressor Stage:	Inverter
Power Supply Connections:		Capacity Control Range (%):	-
Min. Circuit Amps MCA (A):	16.1	Airflow Rate (H/M) (CFM):	2383/2,383
Max Overcurrent Protection (MOP) (A):	20	Gas Pipe Connection (inch):	1/2
Max Starting Current MSC(A):		Liquid Pipe Connection (inch):	1/4
Rated Load Amps RLA(A):		Sound Pressure (H) (dBA):	55
Dimensions (HxWxD) (in):	29-1/2 x 34-1/4 x 12-5/8	Sound Power Level (dBA):	
Net Weight (lb):	127		

DIMENSIONAL DRAWING - OUTDOOR UNIT

RXP15/18AVJU9



3D150942



Submittal Data Sheet

R-32 Daikin Aurora 1.25 Ton Ducted Concealed Heat Pump System

FDMA15AVJU9RXP15AVJU9

INDOOR ACCESSORIES

PART NUMBER	DESCRIPTION	INCLUDED
-------------	-------------	----------

BRC1NRV71	R32 Navigation Remote Controller	No
DCS302C71	Centralized Controller	No
DST301BA61	Schedule Timer	No
KRCS01-6B	Remote Sensor	No
KRP1C76	Wiring Adapter PCB	No

OUTDOOR ACCESSORIES

PART NUMBER	DESCRIPTION	INCLUDED
-------------	-------------	----------

KEH064A41	Drain Pan Heater	No
KKG063A44	Back Protection Wire Net	No
KKP937A4	Drain Plug for OD Unit	Yes
KPS063A41	Snow hood (intake side plate) (15, 18 & 24)	No
KPS063A44	Snow hood (intake rear plate) (15, 18 & 24)	No
KPS063A47	Snow hood (outlet) (15, 18 & 24)	No
KPW063B4	Air direction adjustment grille	No



Submittal Data Sheet

R-32 Daikin Aurora 1.5 Ton Ducted Concealed Heat Pump System
FDMA18AVJU9RXP18AVJU9

FEATURES

- Automatic defrosting & Automatic cooling/heating change over
- Auto Restart after Power failure
- Operation Range—Cooling (50°F - 114.8°F)
- Low temperature cooling operation down to -4°F (-20°C) with wind baffle and field settings
- Operating Range - Heating (-13.8°F - 64.4°F)
- 12-year limited parts and compressor warranty with online registration
- 5-year limited parts warranty for commercial applications
- Inverter controlled Swing compressor with Reluctance DC motor
- Auto Fan Speed
- 3-Step Switchable Fan speed
- Quick Warming function
- Program dry operation
- Fan-only mode
- ECONO operation
- Filter Cleaning Indicator
- Anti-corrosion treatment on outdoor heat exchanger
- Factory charged for up to 49.2 ft of piping length
- Built in refrigeration detection system

BENEFITS

- Inverter and PAM control technologies optimize energy use, delivering efficient performance and reduced electricity consumption
- Concealed systems preserve interior aesthetics by eliminating bulky wall-mounted unit ideal for minimalist and design-focused homes
- Concealed ducted mini splits offer zoned comfort with minimal ductwork, preserving the architectural integrity of historic homes
- Concealed ducted systems efficiently condition large or multi-room spaces using flexible ductwork, offering seamless comfort without multiple wall units
- Compact concealed systems deliver efficient, quiet comfort in small apartments without occupying valuable walls or floor space
- Flexible installation options—either-side drain, and factory charged for up to 49.2 ft. of piping length —simplify setup and reduce labor costs
- Concealed systems maintain visual harmony by delivering discreet comfort without distracting from high-end displays or artwork.
- Concealed systems deliver efficient climate control while preserving a clean, professional look free from exposed HVAC components
- Concealed ducted mini-splits offer a space-saving, energy-efficient solution for individual climate control in apartments and condominiums
- Concealed systems provide quiet, zoned climate control with advanced filtration—ideal for maintaining comfort and air quality in hospitals and hotels

INDOOR UNIT



OUTDOOR UNIT





Submittal Data Sheet

R-32 Daikin Aurora 1.5 Ton Ducted Concealed Heat Pump System

FDMA18AVJU9RXP18AVJU9

SYSTEM PERFORMANCE

Indoor Unit Model No.	FDMA18AVJU9	Indoor Unit Name:	R-32 1.5 Ton Ducted Concealed Indoor Unit
Outdoor Unit Model No.	RXP18AVJU9	Outdoor Unit Name:	Daikin Aurora R-32 1.5 Ton Heat pump outdoor unit
Rated Cooling Capacity (Btu/hr):	17,600	Rated Cooling Conditions:	Indoor (°F DB/WB): 80 / 67 Ambient (°F DB/WB): 95 / 75
Sensible Capacity (Btu/hr):	14,460	Rated Piping Length(ft):	25
Max/Min Cooling Capacity (Btu/hr):	19,600 / 9,000	Rated Height Difference (ft):	0.00
Cooling Input Power (kW):	1.680	Heating Input Power (kW):	2.53
SEER2 (Non-Ducted/Ducted):	/ 18.00	HSPF2 (Non-Ducted/Ducted):	/ 9.2
EER2 (Non-Ducted/Ducted):	/ 11.60	Heating COP (Non-Ducted/Ducted):	3.0 /
Rated Heating Capacity (Btu/hr):	21,600	Rated Heating Conditions:	Indoor (°F DB/WB): 70 / 60 Ambient (°F DB/WB): 47 / 43
Max/Min Heating Capacity (Btu/hr):	25,000 / 9,000		

SYSTEM DETAILS

Refrigerant Type:	R-32	Cooling Operation Range (°F DB):	50 - 115
Holding Refrigerant Charge (lbs):	3.04	Heating Operation Range (°F WB):	-14 - 64
Additional Charge (oz/ft):	0.22	Max. Pipe Length (Vertical) (ft):	66
Pre-charge Piping (Length) (ft):	49	Cooling Range w/Baffle (°F DB):	-4 - 115
Max. Pipe Length (Total) (ft):	99		
Max Height Separation (Ind to Ind ft):	0		

Submittal Data Sheet

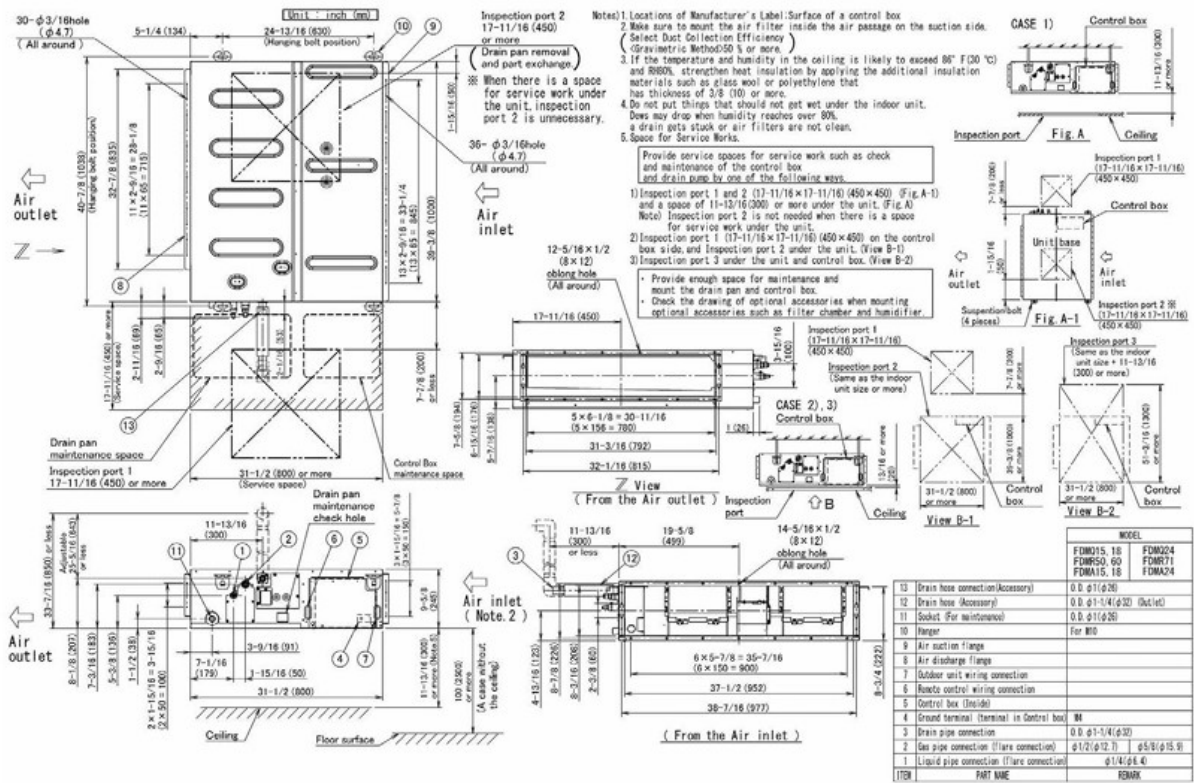
R-32 Daikin Aurora 1.5 Ton Ducted Concealed Heat Pump System
FDMA18AVJU9RXP18AVJU9

INDOOR UNIT DETAILS

Power Supply (V/Hz/Ph):	208/230 / 60 / 1	Airflow Rate (H/M/L) (CFM):	609/498/373
Power Supply Connections:		Moisture Removal (Gal/hr):	
Min. Circuit Amps MCA (A):		Gas Pipe Connection (inch):	1/2
Max Overcurrent Protection (MOP) (A):		Liquid Pipe Connection (inch):	1/4
Dimensions (HxWxD) (in):	9-5/8 x 39-3/8 x 31-1/2	Condensate Connection (inch):	1
Net Weight (lb):	82	Sound Pressure (H) (dBA):	35
Ext. Static Pressure (Rated/Max) (inWg):	0.6 /	Sound Power Level (dBA):	

DIMENSIONAL DRAWING - INDOOR UNIT

FDMA15/18/24AVJU9



3D112919C



Submittal Data Sheet

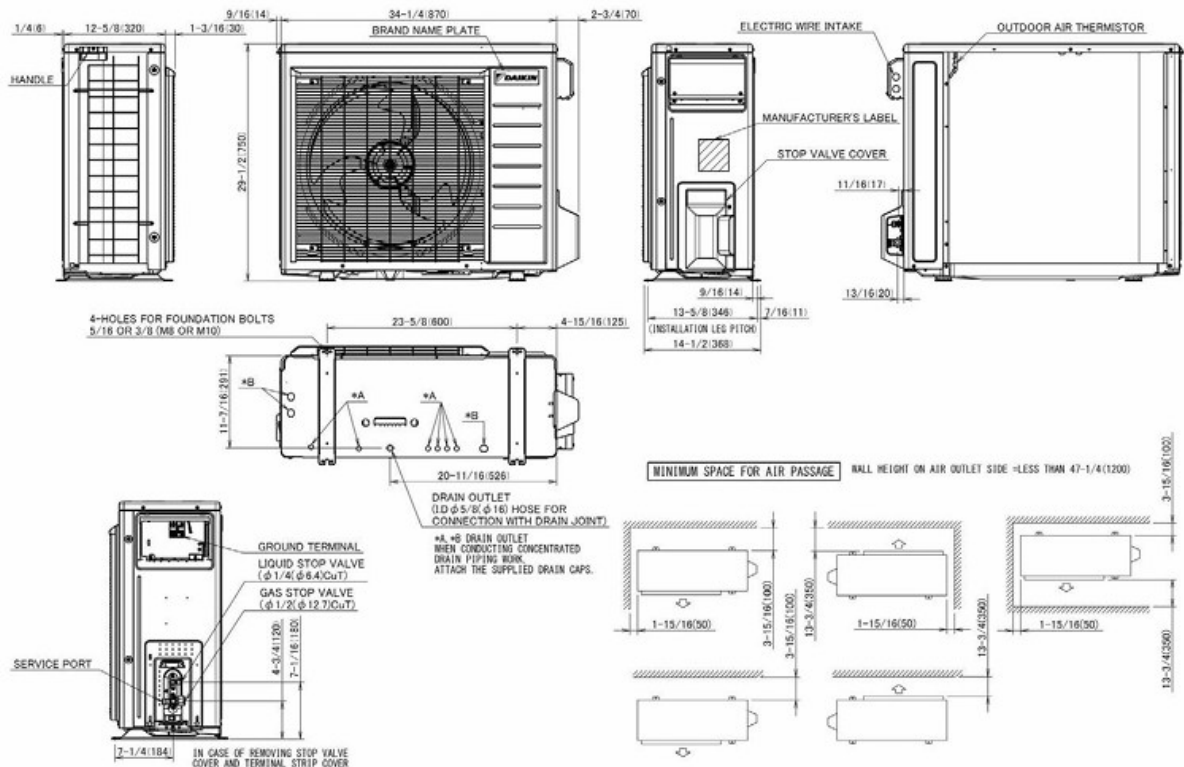
R-32 Daikin Aurora 1.5 Ton Ducted Concealed Heat Pump System
FDMA18AVJU9RXP18AVJU9

OUTDOOR UNIT DETAILS

Power Supply (V/Hz/Ph):	208/230 / 60 / 1	Compressor Stage:	Inverter
Power Supply Connections:		Capacity Control Range (%):	-
Min. Circuit Amps MCA (A):	21.4	Airflow Rate (H/M) (CFM):	2383/2,383
Max Overcurrent Protection (MOP) (A):	25	Gas Pipe Connection (inch):	1/2
Max Starting Current MSC(A):		Liquid Pipe Connection (inch):	1/4
Rated Load Amps RLA(A):		Sound Pressure (H) (dBA):	55
Dimensions (HxWxD) (in):	29-1/2 x 34-1/4 x 12-5/8	Sound Power Level (dBA):	
Net Weight (lb):	127		

DIMENSIONAL DRAWING - OUTDOOR UNIT

RXP15/18AVJU9



3D150942



Submittal Data Sheet

R-32 Daikin Aurora 1.5 Ton Ducted Concealed Heat Pump System

FDMA18AVJU9RXP18AVJU9

INDOOR ACCESSORIES

PART NUMBER	DESCRIPTION	INCLUDED
-------------	-------------	----------

BRC1NRV71	R32 Navigation Remote Controller	No
DCS302C71	Centralized Controller	No
DST301BA61	Schedule Timer	No
KRCS01-6B	Remote Sensor	No
KRP1C76	Wiring Adapter PCB	No

OUTDOOR ACCESSORIES

PART NUMBER	DESCRIPTION	INCLUDED
-------------	-------------	----------

KEH064A41	Drain Pan Heater	No
KKG063A44	Back Protection Wire Net	No
KKP937A4	Drain Plug for OD Unit	Yes
KPS063A41	Snow hood (intake side plate) (15, 18 & 24)	No
KPS063A44	Snow hood (intake rear plate) (15, 18 & 24)	No
KPS063A47	Snow hood (outlet) (15, 18 & 24)	No
KPW063B4	Air direction adjustment grille	No



Submittal Data Sheet

R-32 Daikin Aurora 2 Ton Ducted Concealed Heat Pump System
FDMA24AVJU9RXP24AVJU9

FEATURES

- Automatic defrosting & Automatic cooling/heating change over
- Auto Restart after Power failure
- Operation Range—Cooling (50°F - 114.8°F)
- Low temperature cooling operation down to -4°F (-20°C) with wind baffle and field settings
- Operating Range - Heating (-13.8°F - 64.4°F)
- 12-year limited parts and compressor warranty with online registration
- 5-year limited parts warranty for commercial applications
- Inverter controlled Swing compressor with Reluctance DC motor
- Auto Fan Speed
- 3-Step Switchable Fan speed
- Quick Warming function
- Program dry operation
- Fan-only mode
- ECONO operation
- Filter Cleaning Indicator
- Anti-corrosion treatment on outdoor heat exchanger
- Factory charged for up to 49.2 ft of piping length
- Built in refrigeration detection system

BENEFITS

- Inverter and PAM control technologies optimize energy use, delivering efficient performance and reduced electricity consumption
- Concealed systems preserve interior aesthetics by eliminating bulky wall-mounted unit ideal for minimalist and design-focused homes
- Concealed ducted mini splits offer zoned comfort with minimal ductwork, preserving the architectural integrity of historic homes
- Concealed ducted systems efficiently condition large or multi-room spaces using flexible ductwork, offering seamless comfort without multiple wall units
- Compact concealed systems deliver efficient, quiet comfort in small apartments without occupying valuable walls or floor space
- Flexible installation options—either-side drain, and factory charged for up to 49.2 ft. of piping length —simplify setup and reduce labor costs
- Concealed systems maintain visual harmony by delivering discreet comfort without distracting from high-end displays or artwork.
- Concealed systems deliver efficient climate control while preserving a clean, professional look free from exposed HVAC components
- Concealed ducted mini-splits offer a space-saving, energy-efficient solution for individual climate control in apartments and condominiums
- Concealed systems provide quiet, zoned climate control with advanced filtration—ideal for maintaining comfort and air quality in hospitals and hotels

INDOOR UNIT



OUTDOOR UNIT





Submittal Data Sheet

R-32 Daikin Aurora 2 Ton Ducted Concealed Heat Pump System

FDMA24AVJU9RXP24AVJU9

SYSTEM PERFORMANCE

Indoor Unit Model No.	FDMA24AVJU9	Indoor Unit Name:	R-32 2 Ton Ducted Concealed Indoor Unit
Outdoor Unit Model No.	RXP24AVJU9	Outdoor Unit Name:	Daikin Aurora R-32 2 Ton Heat pump outdoor unit
Rated Cooling Capacity (Btu/hr):	21,800	Rated Cooling Conditions:	Indoor (°F DB/WB): 80 / 67 Ambient (°F DB/WB): 95 / 75
Sensible Capacity (Btu/hr):	15,740	Rated Piping Length(ft):	25
Max/Min Cooling Capacity (Btu/hr):	23,000 / 9,000	Rated Height Difference (ft):	0.00
Cooling Input Power (kW):	2.210	Heating Input Power (kW):	2.79
SEER2 (Non-Ducted/Ducted):	/ 18.30	HSPF2 (Non-Ducted/Ducted):	/ 9.2
EER2 (Non-Ducted/Ducted):	/ 10.30	Heating COP (Non-Ducted/Ducted):	3.0 /
Rated Heating Capacity (Btu/hr):	24,000	Rated Heating Conditions:	Indoor (°F DB/WB): 70 / 60 Ambient (°F DB/WB): 47 / 43
Max/Min Heating Capacity (Btu/hr):	27,600 / 9,000		

SYSTEM DETAILS

Refrigerant Type:	R-32	Cooling Operation Range (°F DB):	50 - 115
Holding Refrigerant Charge (lbs):	3.04	Heating Operation Range (°F WB):	-14 - 64
Additional Charge (oz/ft):	0.22	Max. Pipe Length (Vertical) (ft):	66
Pre-charge Piping (Length) (ft):	49	Cooling Range w/Baffle (°F DB):	-4 - 115
Max. Pipe Length (Total) (ft):	99		
Max Height Separation (Ind to Ind ft):	0		



Submittal Data Sheet

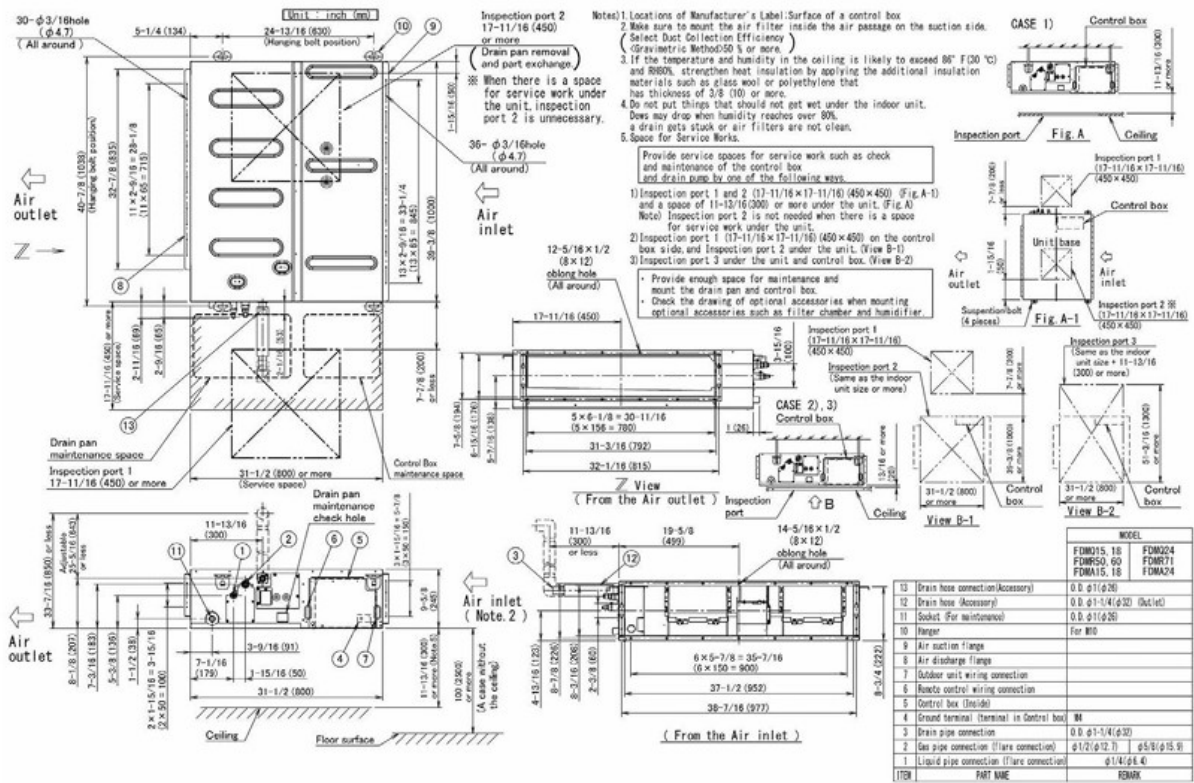
R-32 Daikin Aurora 2 Ton Ducted Concealed Heat Pump System
FDMA24AVJU9RXP24AVJU9

INDOOR UNIT DETAILS

Power Supply (V/Hz/Ph):	208-230 / 60 / 1	Airflow Rate (H/M/L) (CFM):	666/553/426
Power Supply Connections:		Moisture Removal (Gal/hr):	
Min. Circuit Amps MCA (A):		Gas Pipe Connection (inch):	5/8
Max Overcurrent Protection (MOP) (A):		Liquid Pipe Connection (inch):	1/4
Dimensions (HxWxD) (in):	9-5/8 x 39-3/8 x 31-1/2	Condensate Connection (inch):	1
Net Weight (lb):	88	Sound Pressure (H) (dBA):	40
Ext. Static Pressure (Rated/Max) (inWg):	0.6 /	Sound Power Level (dBA):	

DIMENSIONAL DRAWING - INDOOR UNIT

FDMA15/18/24AVJU9



3D112919C



Submittal Data Sheet

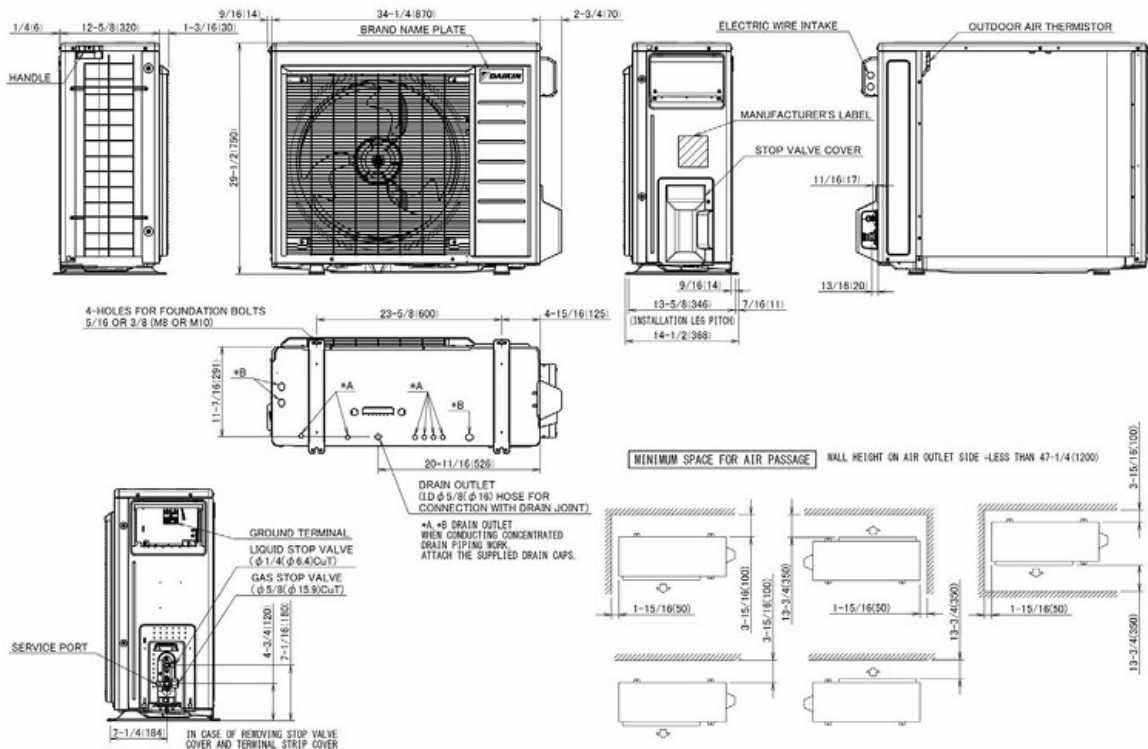
R-32 Daikin Aurora 2 Ton Ducted Concealed Heat Pump System
FDMA24AVJU9RXP24AVJU9

OUTDOOR UNIT DETAILS

Power Supply (V/Hz/Ph):	208/230 / 60 / 1	Compressor Stage:	Inverter
Power Supply Connections:		Capacity Control Range (%):	-
Min. Circuit Amps MCA (A):	21.6	Airflow Rate (H/M) (CFM):	2383/2,383
Max Overcurrent Protection (MOP) (A):	25	Gas Pipe Connection (inch):	5/8
Max Starting Current MSC(A):		Liquid Pipe Connection (inch):	1/4
Rated Load Amps RLA(A):		Sound Pressure (H) (dBA):	55
Dimensions (HxWxD) (in):	29-1/2 x 34-1/4 x 12-5/8	Sound Power Level (dBA):	
Net Weight (lb):	127		

DIMENSIONAL DRAWING - OUTDOOR UNIT

RXP24AVJU9



3D150943



Submittal Data Sheet

R-32 Daikin Aurora 2 Ton Ducted Concealed Heat Pump System

FDMA24AVJU9RXP24AVJU9

INDOOR ACCESSORIES

PART NUMBER	DESCRIPTION	INCLUDED
-------------	-------------	----------

BRC1NRV71	R32 Navigation Remote Controller	No
DCS302C71	Centralized Controller	No
DST301BA61	Schedule Timer	No
KRCS01-6B	Remote Sensor	No
KRP1C76	Wiring Adapter PCB	No

OUTDOOR ACCESSORIES

PART NUMBER	DESCRIPTION	INCLUDED
-------------	-------------	----------

KEH064A41	Drain Pan Heater	No
KKG063A44	Back Protection Wire Net	No
KKP937A4	Drain Plug for OD Unit	Yes
KPS063A41	Snow hood (intake side plate) (15, 18 & 24)	No
KPS063A44	Snow hood (intake rear plate) (15, 18 & 24)	No
KPS063A47	Snow hood (outlet) (15, 18 & 24)	No
KPW063B4	Air direction adjustment grille	No