

Job Name: _____	Location: _____	Date: _____
Purchaser: _____	Engineer: _____	
Submitted to: _____	For <input type="checkbox"/> Reference <input type="checkbox"/> Approval <input type="checkbox"/> Construction	
Unit Designation: _____	Schedule No.: _____	

**GENERAL FEATURES**

- Ceiling-concealed ducted indoor unit for residential and small commercial applications
- Ultra-thin body: 7-7/8" high
- Built-in drain mechanism for condensate removal; lifts to 21-11/16"
- Air filter is included with indoor unit
- Quiet operation—both indoor and outdoor units
- PAR-21MAA wired remote controller is included
- Automatic fan speed control
- Auto restart following a power outage
- Self-check function—integrated diagnostics
- Limited warranty: five years on parts and defects and seven years on compressors

**OPTIONAL ACCESSORIES**
**Indoor Unit**

- External Heat Adapter (PAC-YU25HT)

**Outdoor Unit**

- M-NET Adapter (PAC-SF80MA-E)
- Air Outlet Guide (PAC-SG58SG-E)
- Wind Baffle (WB-PA1)

**Cooling\***

Rated Capacity	12,000 Btu/h
Minimum Capacity	6,000 Btu/h
SEER	13.8 Btu/h/W
Total Input	1,240 W

\* Rating Conditions (Cooling) - Indoor: 80°F (27°C) DB / 67°F (19°C) WB.  
 Outdoor: 95°F (35°C) DB / 75°F (24°C) WB.

**Electrical Requirements**

Power Supply	208 / 230V, 1-Phase, 60 Hz
Breaker Size	15 A

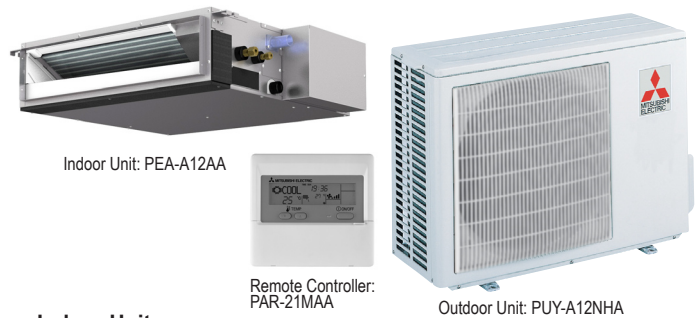
**Voltage**

Indoor - Outdoor S1-S2	AC 208 / 230V
Indoor - Outdoor S2-S3	.DC 24V

**OPERATING RANGE**

		Indoor Intake Air Temp.	Outdoor Intake Air Temp.
Cooling	Maximum	95°F (35°C) DB, 71°F (22°C) WB	115°F (46°C) DB
	Minimum	67°F (19°C) DB, 57°F (14°C) WB	0°F** (-18°C) DB

\*\* With optional wind baffle accessory installed. If not installed, the minimum temperature will be 23°F (-5°C) DB.


**Indoor Unit**

MCA	1 A
Fan Type x Quantity	Sirocco fan x 2
Fan Motor Type	Direct-driven DC Brushless Motor
Fan Motor	0.57 F.L.A.
Fan Motor Output	.96 W
Airflow (Lo - Med - Hi)	247 - 317 - 388 Dry CFM 222 - 285 - 349 Wet CFM
Air Filter	Polypropylene Honeycomb
External Static Pressure	0.02 - 0.06 - 0.14 - 0.20" WG
Sound Pressure Level (Lo - Med - Hi)	.23 - 28 - 33 dB(A)

DIMENSIONS	UNIT INCHES / MM
W	39 / 990
D	27-9/16 / 700
H	7-7/8 / 200

Weight	50 lbs. / 23 kg
Field Drainpipe Size O.D.	1-1/4" / 32 mm
Wall-mounted Remote Controller	PAR-21MAA (See Data Submittal Sheet)

**Outdoor Unit**

Compressor	DC Inverter-driven Twin Rotary
MCA	13 A
Fan Motor	0.35 F.L.A.
Sound Pressure Level (Cooling)	46 dB(A)

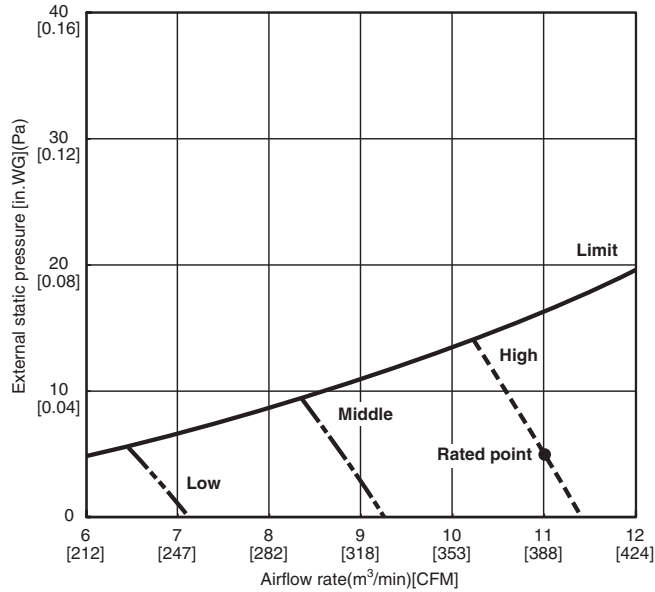
DIMENSIONS	INCHES / MM
W	31-1/2 / 800
D	13 + 7/8 / 330 + 22
H	23-5/8 / 600

Weight	.90 lbs. / 41 kg
Refrigerant Type	R410A
Refrigerant Pipe Size O.D.	
Gas Side	1/2" / 12.7 mm
Liquid Side	1/4" / 6.35 mm
Max. Refrigerant Pipe Length	100' / 30 m
Max. Refrigerant Pipe Height Difference	100' / 30 m
Connection Method	Flared

# INDOOR UNIT PEA-A12AA FAN PERFORMANCE AND AIRFLOW RATES

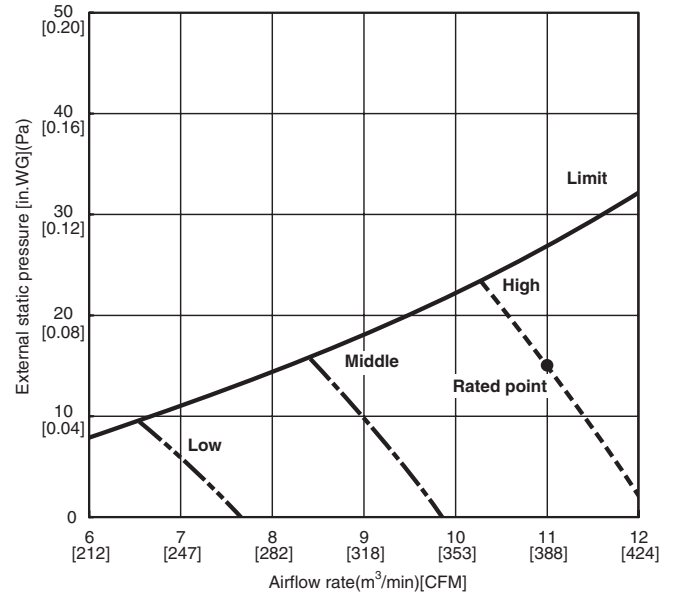
## PEA-A12AA

(External static pressure 0.020[in.WG](5Pa) 208/230V 60Hz)



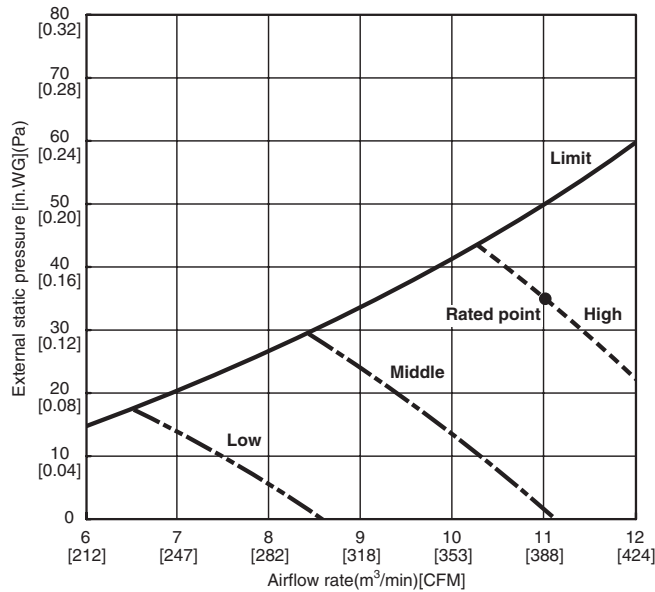
## PEA-A12AA

(External static pressure 0.060[in.WG](15Pa) 208/230V 60Hz)



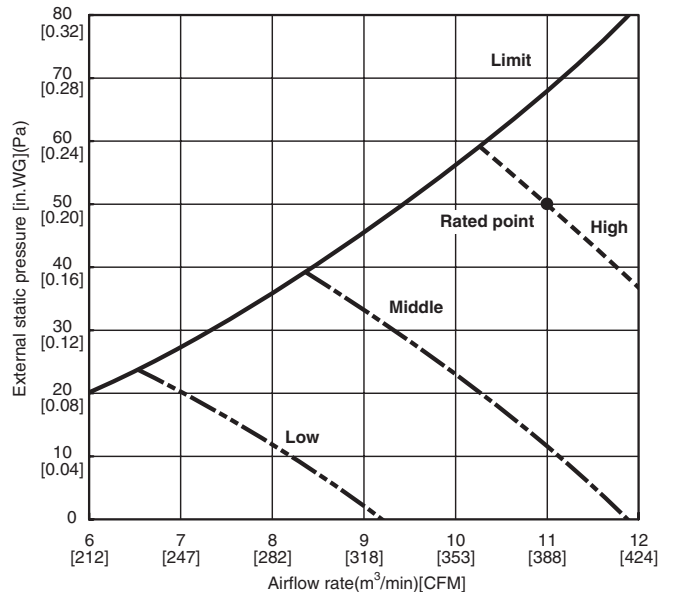
## PEA-A12AA

(External static pressure 0.140[in.WG](35Pa) 208/230V 60Hz)



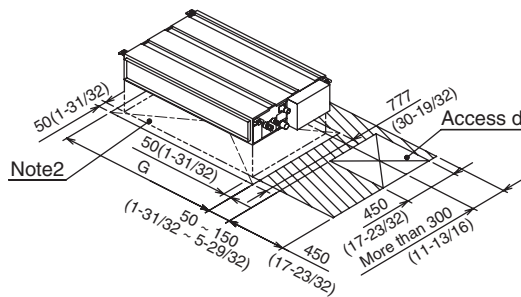
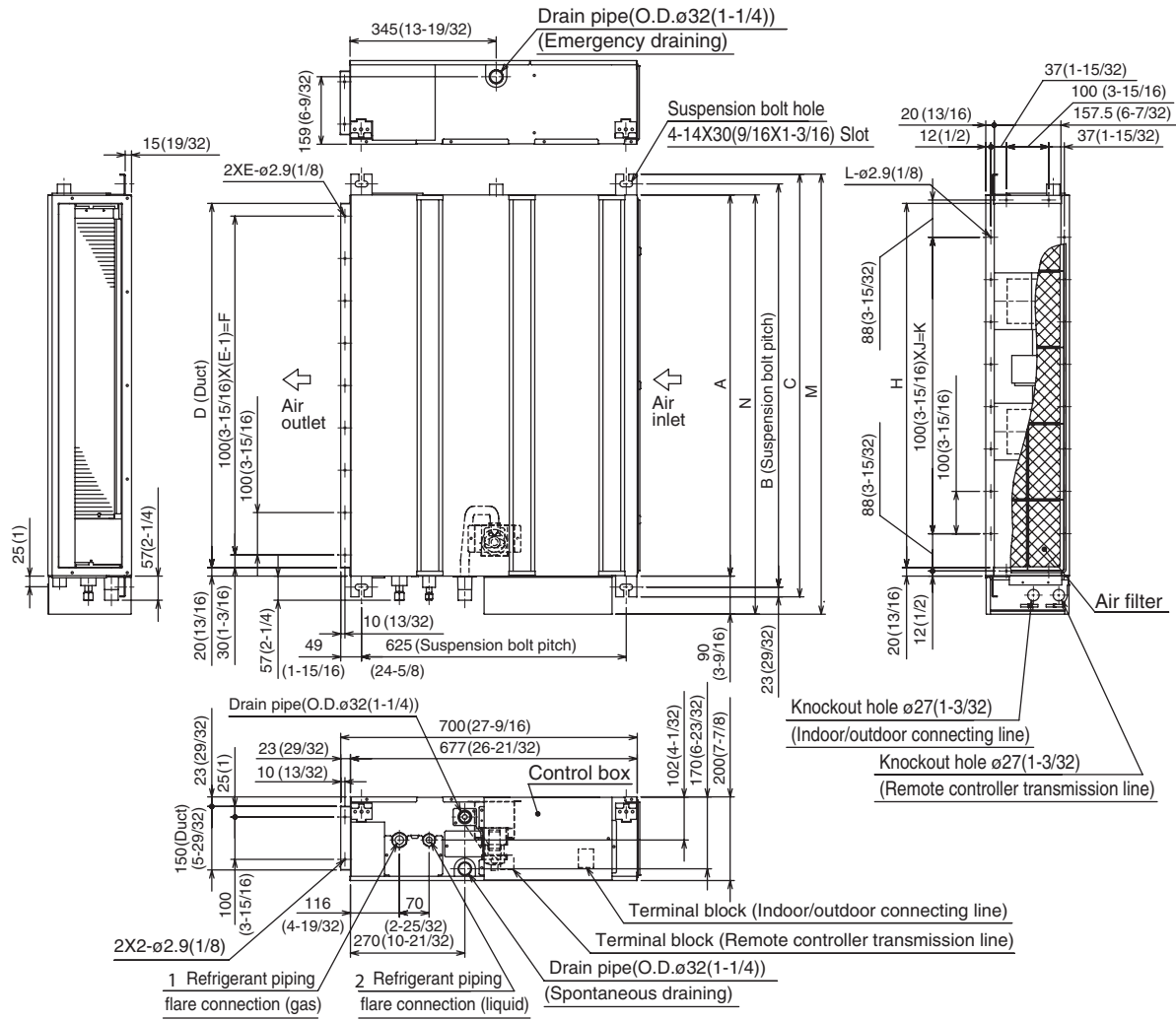
## PEA-A12AA

(External static pressure 0.200[in.WG](50Pa) 208/230V 60Hz)

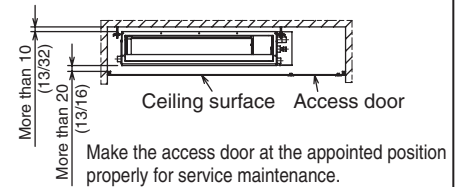


# DIMENSIONS: PEA-A12AA

Unit : mm(in.)



Required space for service and maintenance



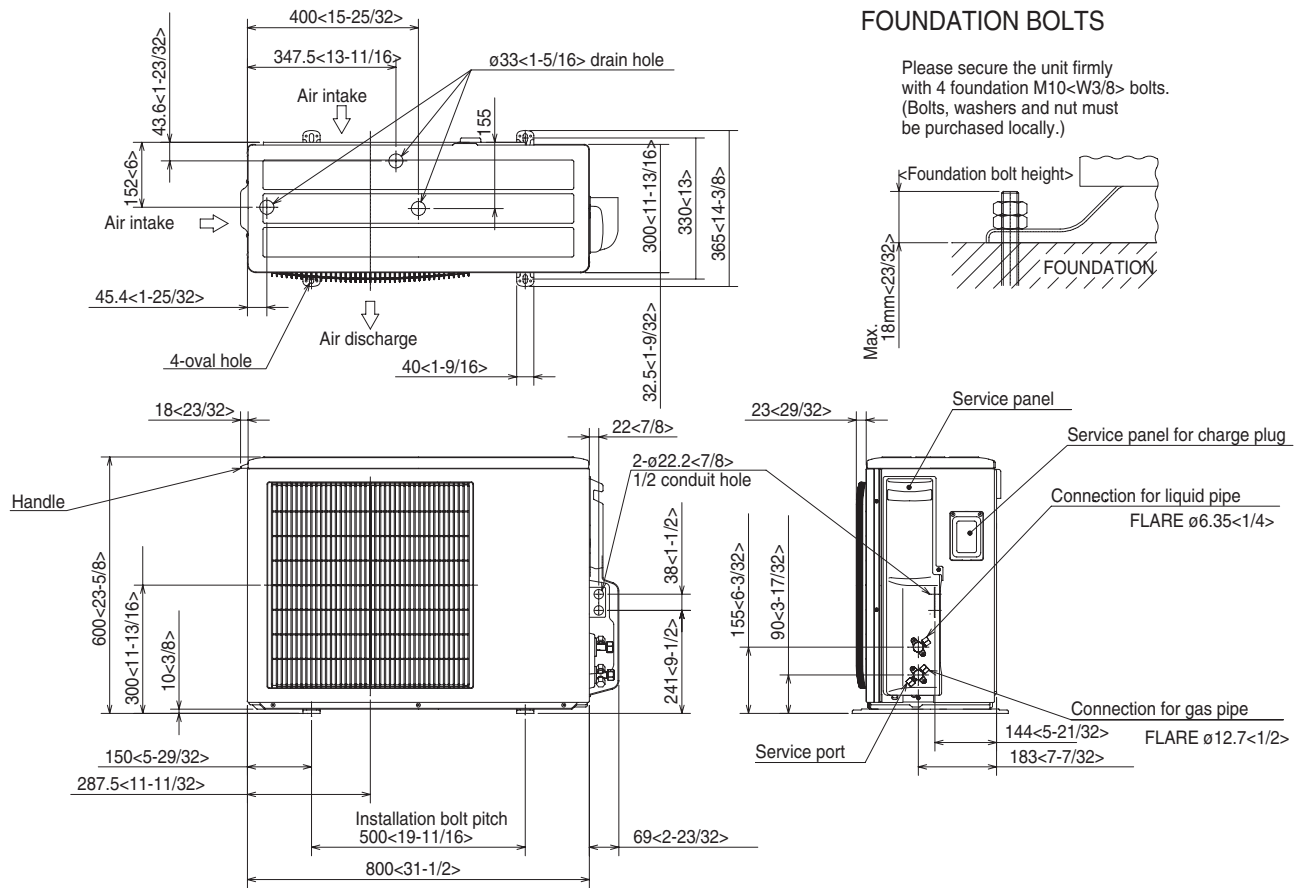
mm(in.)

Model	A	B	C	D	E	F	G	H	J	K	L	M	N	① Gas pipe	② Liquid pipe
PEA-A12AA	900 (35-7/16)	952 (37-1/2)	998 (39-5/16)	860 (33-7/8)	9	800 (31-1/2)	1000 (39-3/8)	860 (33-7/8)	7	700 (27-9/16)	20	1039 (40-23/32)	990 (39)	ø12.7(1/2)	ø6.35(1/4)
PEA-A18AA	1100 (43-5/16)	1152 (45-3/8)	1198 (47-3/16)	1060 (41-3/4)	11	1000 (39-3/8)	1200 (47-1/4)	1060 (41-3/4)	9	900 (35-7/16)	24	1239 (48-25/32)	1190 (46-7/8)		

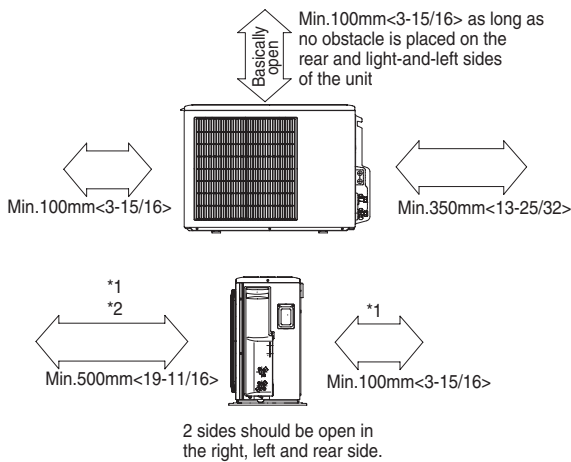
- Note1. Use M10 screw for the suspension bolt (field supply).  
 Note2. Keep the service space for the maintenance at the bottom.  
 Note3. This chart indicates for PEA-A12AA model, which has 2 fans. PEA-A18AA models have 4 fans.  
 Note4. In case an inlet duct is used, remove the air filter (supply with the unit), then install the filter (field supply) at suction side.

# DIMENSIONS: PUY-A12NHA

Unit : mm<inch>



### Clearance space needed around the outdoor unit



### PIPING-WIRING DIRECTION

Piping and wiring connection can only be made from the back.

### Minimum installation space for outdoor unit

If the unit is installed in a place where short cycle can occur, cooling and heating capacity might be reduced by 10%. Using an air outlet guide (PAC-SG58SG-E) will help deflect exhaust air and improve performance.



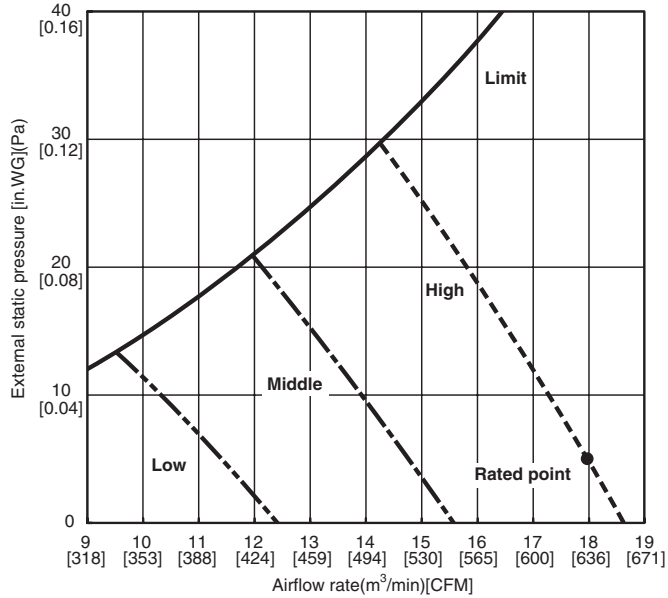
**HVAC Advanced Products Division**  
 3400 Lawrenceville Suwanee Rd  
 Suwanee, GA 30024  
 Tele: 678-376-2900 • Fax: 800-889-9904  
 Toll Free: 800-433-4822 (#3)  
[www.mehvac.com](http://www.mehvac.com)  
 Specifications are subject to change without notice.



# INDOOR UNIT PEA-A18AA FAN PERFORMANCE AND AIRFLOW RATES

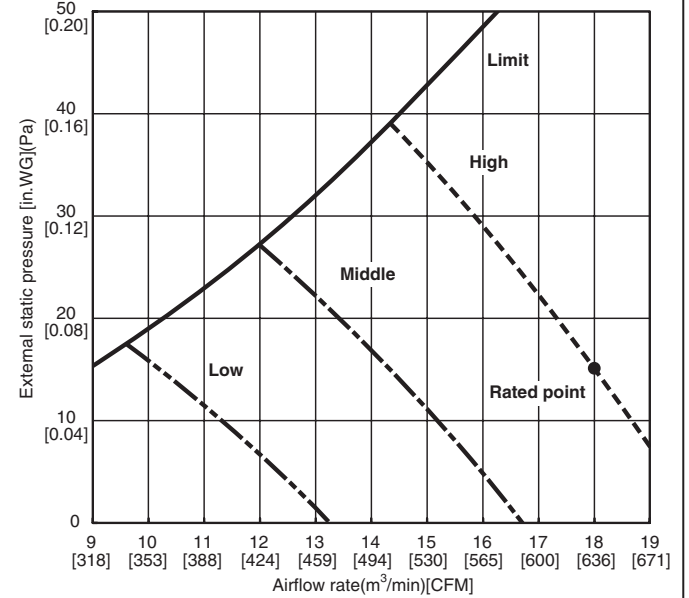
## PEA-A18AA

(External static pressure 0.020[in.WG](5Pa) 208/230V 60Hz)



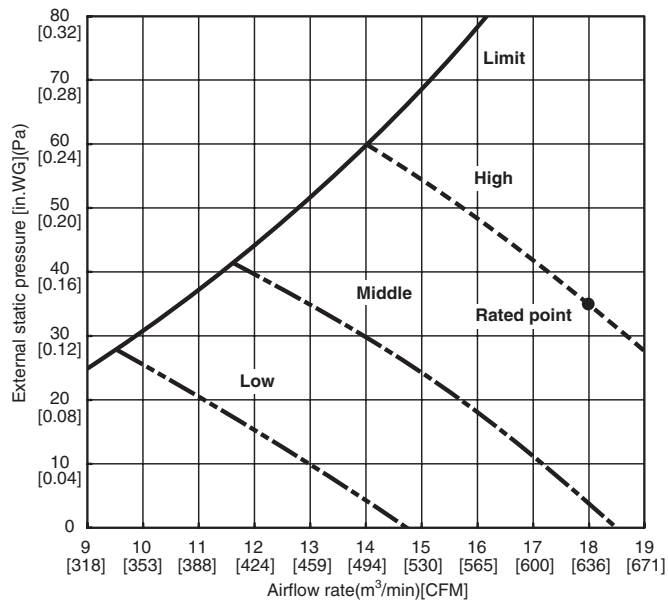
## PEA-A18AA

(External static pressure 0.060[in.WG](15Pa) 208/230V 60Hz)



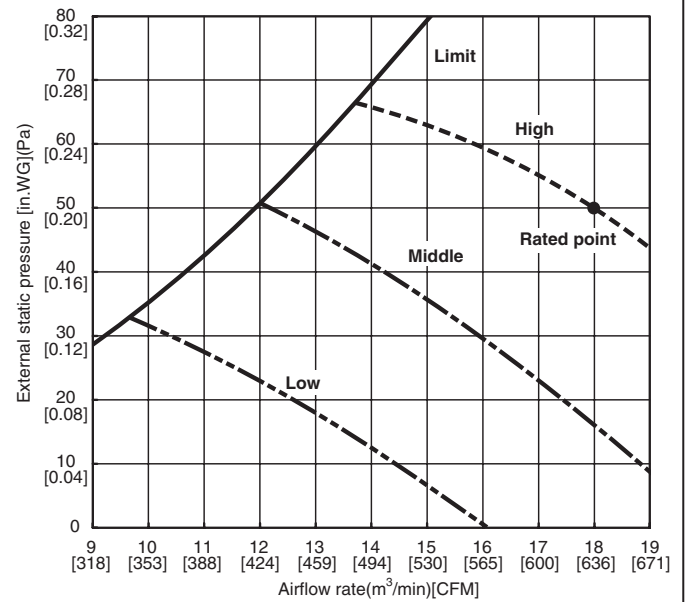
## PEA-A18AA

(External static pressure 0.140[in.WG](35Pa) 208/230V 60Hz)



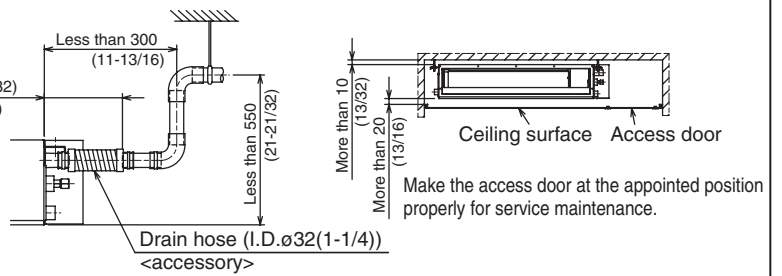
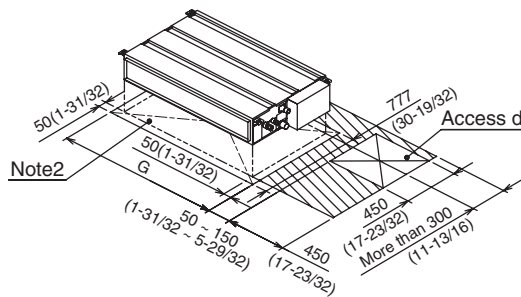
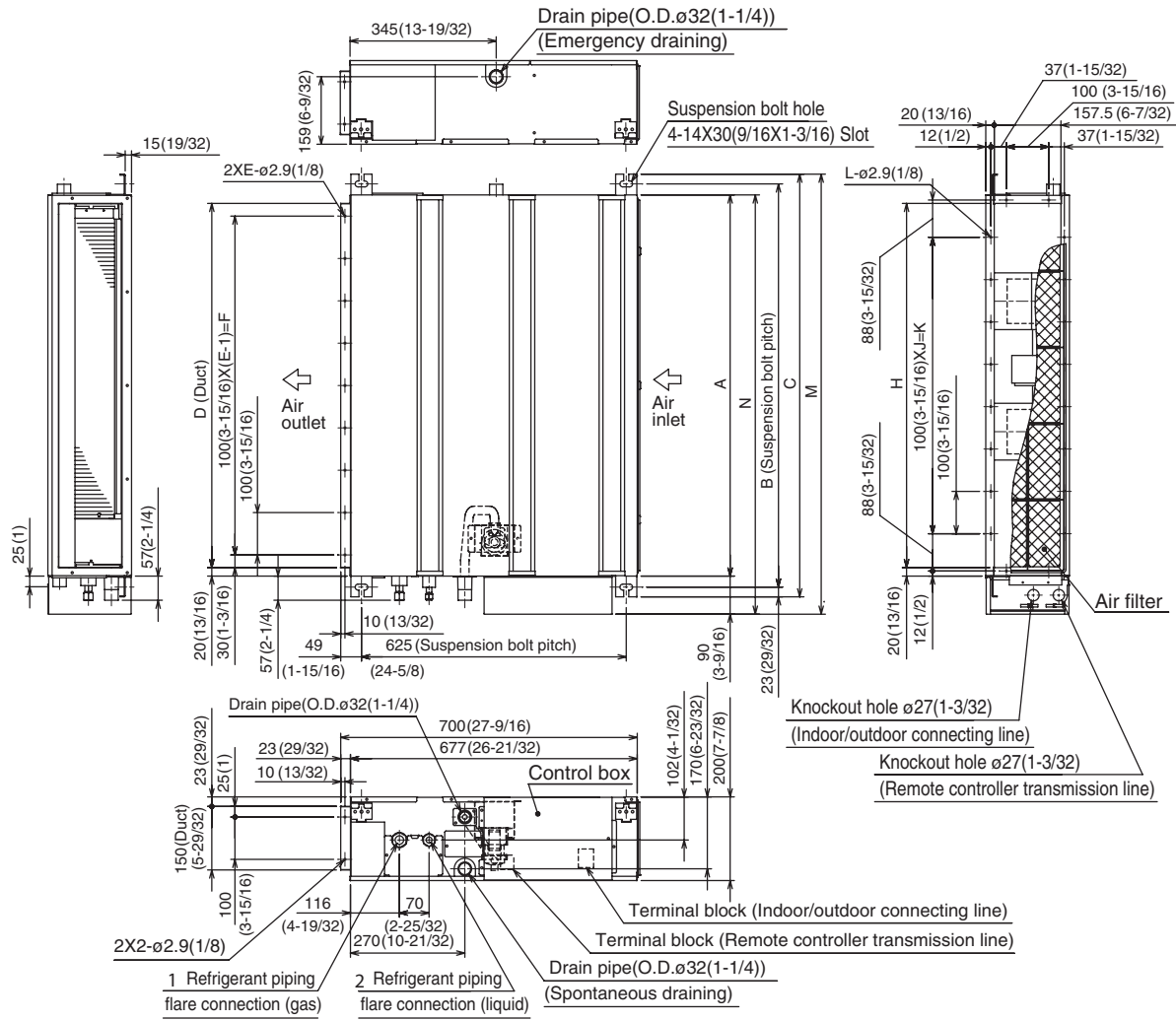
## PEA-A18AA

(External static pressure 0.200[in.WG](50Pa) 208/230V 60Hz)



# DIMENSIONS: PEA-A18AA

Unit : mm(in.)



Required space for service and maintenance

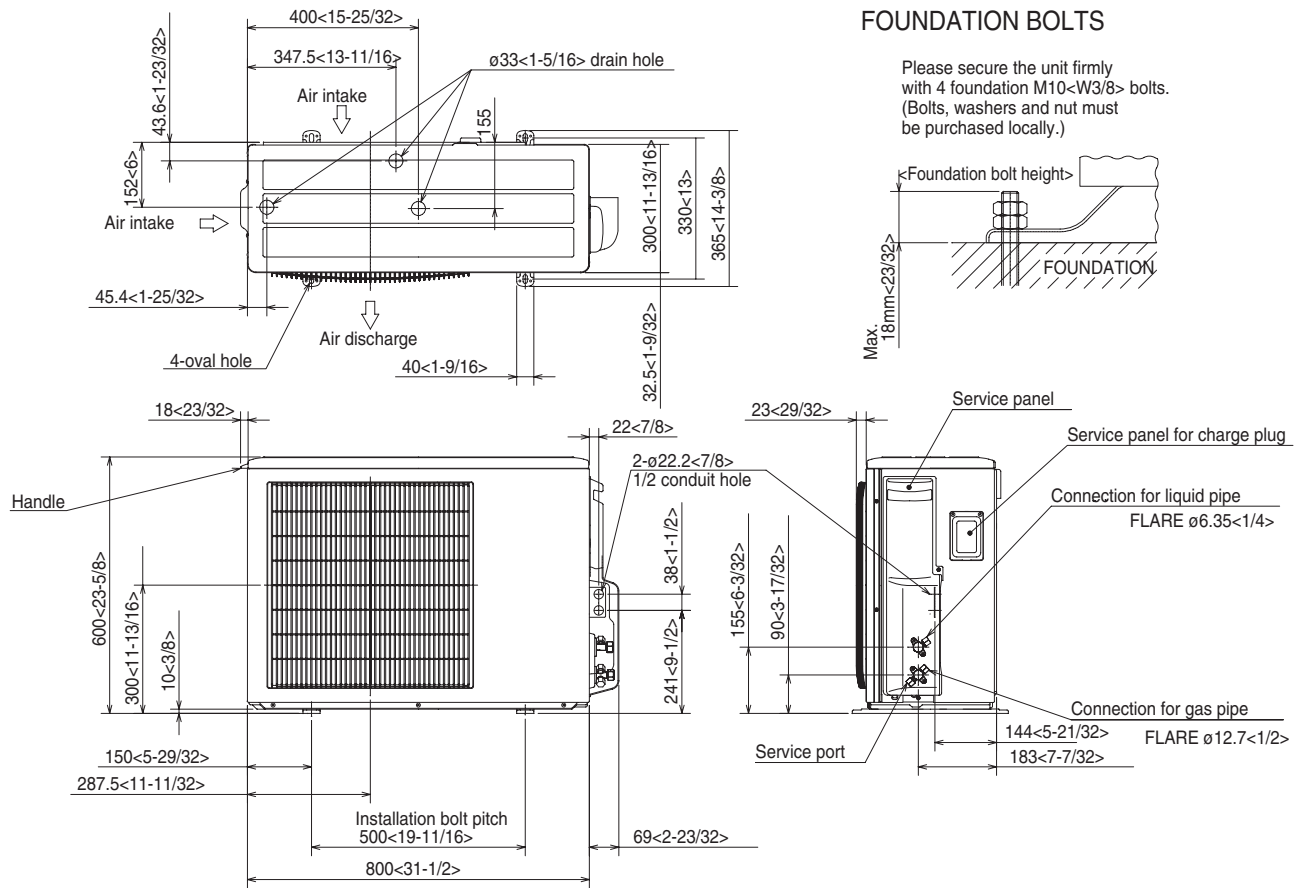
mm(in.)

Model	A	B	C	D	E	F	G	H	J	K	L	M	N	① Gas pipe	② Liquid pipe
PEA-A12AA	900 (35-7/16)	952 (37-1/2)	998 (39-5/16)	860 (33-7/8)	9	800 (31-1/2)	1000 (39-3/8)	860 (33-7/8)	7	700 (27-9/16)	20	1039 (40-23/32)	990 (39)	ø12.7(1/2)	ø6.35(1/4)
PEA-A18AA	1100 (43-5/16)	1152 (45-3/8)	1198 (47-3/16)	1060 (41-3/4)	11	1000 (39-3/8)	1200 (47-1/4)	1060 (41-3/4)	9	900 (35-7/16)	24	1239 (48-25/32)	1190 (46-7/8)		

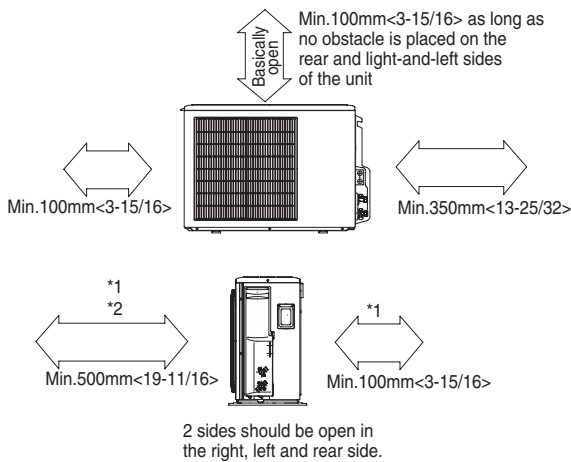
- Note1. Use M10 screw for the suspension bolt (field supply).  
 Note2. Keep the service space for the maintenance at the bottom.  
 Note3. This chart indicates for PEA-A12AA model, which has 2 fans. PEA-A18AA models have 4 fans.  
 Note4. In case an inlet duct is used, remove the air filter (supply with the unit), then install the filter (field supply) at suction side.

# DIMENSIONS: PUZ-A18NHA

Unit : mm<inch>



### Clearance space needed around the outdoor unit



### PIPING-WIRING DIRECTION

Piping and wiring connection can only be made from the back.

### Minimum installation space for outdoor unit

If the unit is installed in a place where short cycle can occur, cooling and heating capacity might be reduced by 10%. Using an air outlet guide (PAC-SG58SG-E) will help deflect exhaust air and improve performance.



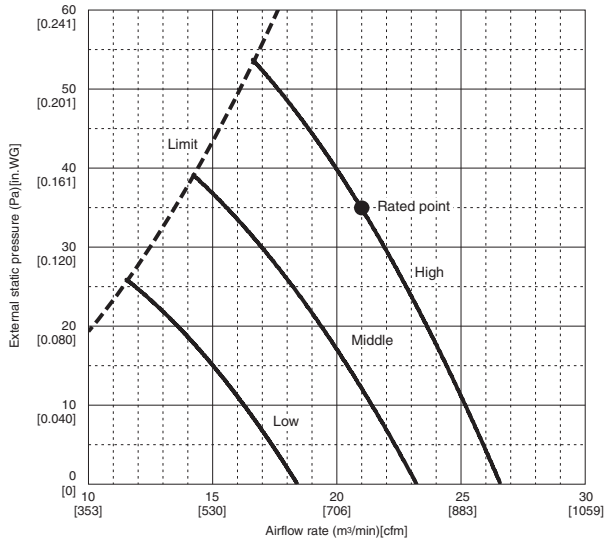
**HVAC Advanced Products Division**  
 3400 Lawrenceville Suwanee Rd  
 Suwanee, GA 30024  
 Tele: 678-376-2900 • Fax: 800-889-9904  
 Toll Free: 800-433-4822 (#3)  
[www.mehvac.com](http://www.mehvac.com)  
 Specifications are subject to change without notice.



# INDOOR UNIT PEAD-A24AA FAN PERFORMANCE AND AIRFLOW RATES

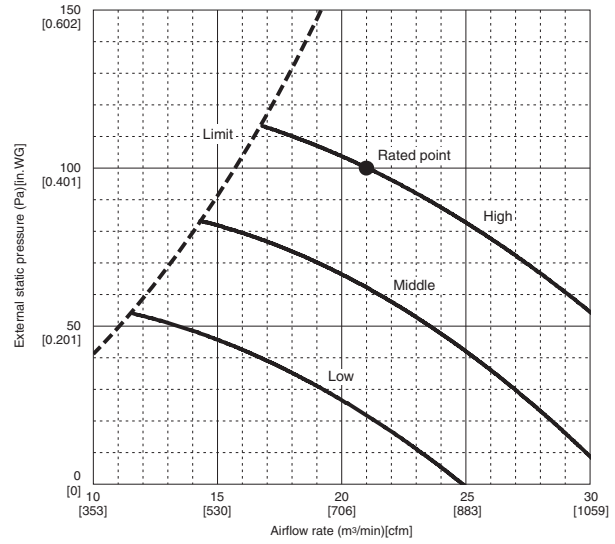
## PEAD-A24AA

(External static pressure 35Pa [0.14 in. WG]) 208-230V 60Hz



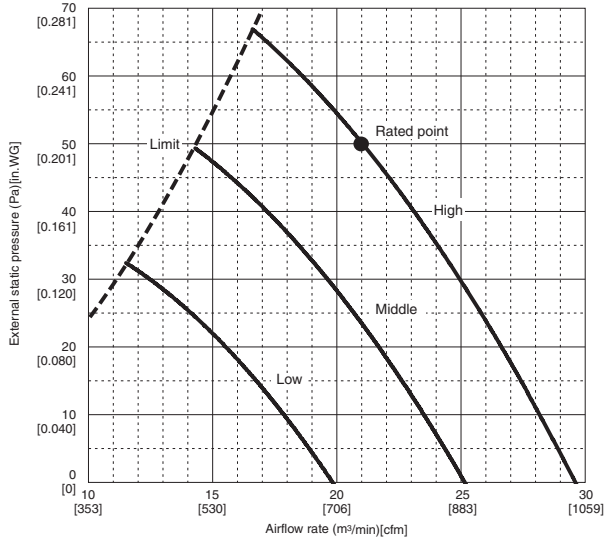
## PEAD-A24AA

(External static pressure 100Pa [0.4 in. WG]) 208-230V 60Hz



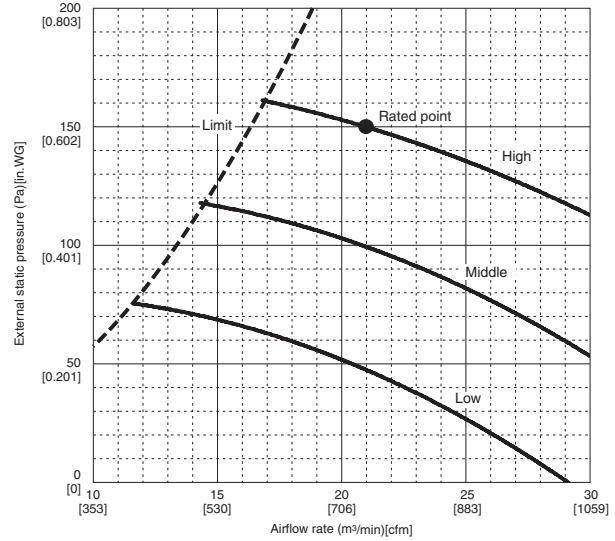
## PEAD-A24AA

(External static pressure 50Pa [0.2 in. WG]) 208-230V 60Hz



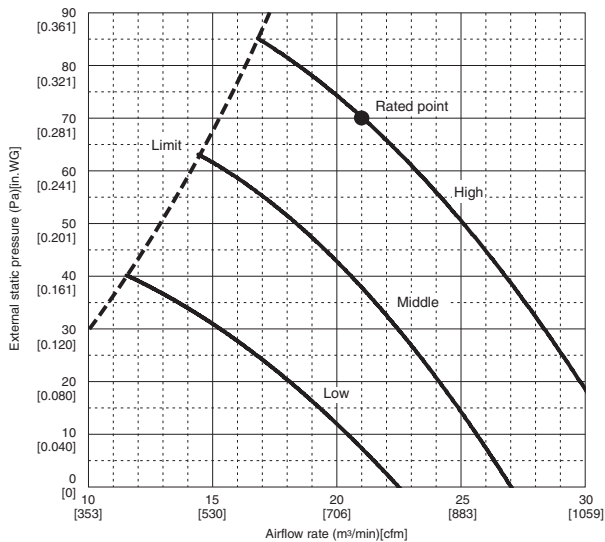
## PEAD-A24AA

(External static pressure 150Pa [0.6 in. WG]) 208-230V 60Hz



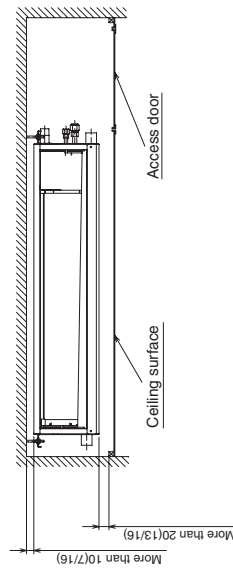
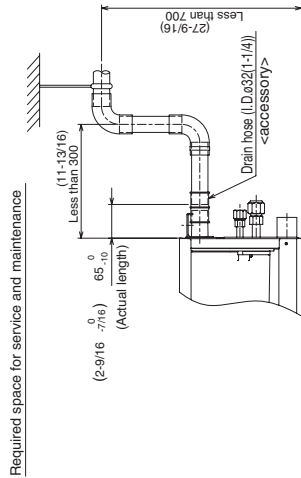
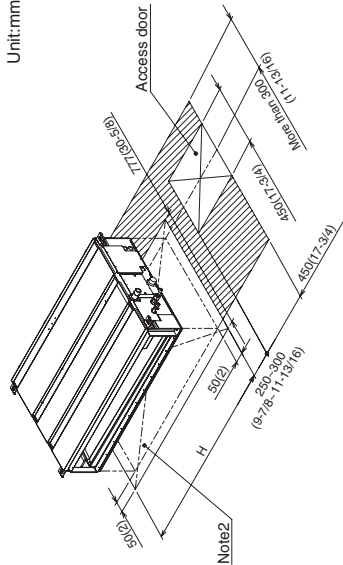
## PEAD-A24AA

(External static pressure 70Pa [0.3 in. WG]) 208-230V 60Hz

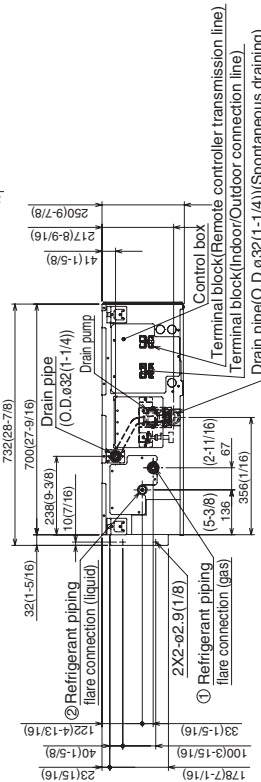
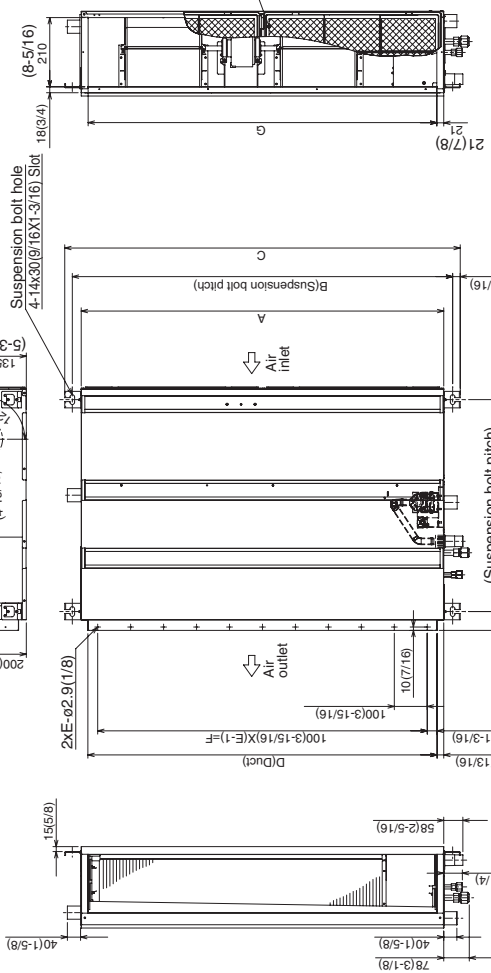
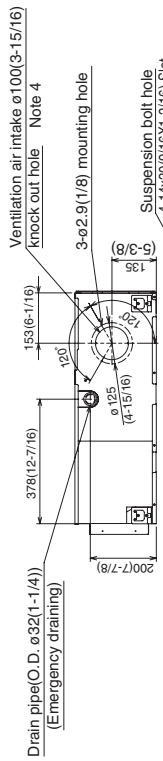
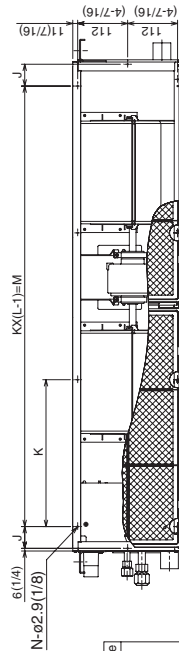


# DIMENSIONS: PEAD-A24AA

Unit:mm(in.)



Make the access door at the appointed position properly for service maintenance.



Model	A	B	C	D	E	F	G	H	J	K	L	M	N	① Gas pipe	② Liquid pipe
PEAD-A24_30AA	1100 (43-5/16)	1154 (45-7/16)	1200 (47-1/4)	1060 (41-3/4)	11	1000 (39-3/8)	1056 (41-11/16)	1200 (47-1/4)	49 (1-15/16)	330 (13)	4	990 (39)	10	ø15.88 (5/8)	ø9.52 (3/8)
PEAD-A36_42AA	1400 (55-1/8)	1454 (57-1/4)	1500 (59-1/16)	1360 (53-9/16)	14	1300 (51-3/16)	1356 (53-1/2)	1500 (59-1/16)	54 (2-3/16)	320 (12-5/8)	5	1280 (50-7/16)	12		

- NOTE 1. Use M10 screw for the Suspension bolt (field supply).  
 2. Keep the service space for the maintenance at the bottom.  
 3. This chart indicates for PEAD-A24-30-36-42AA models, which have 2 fans.  
 4. In case of the inlet duct is used, remove the air filter (supplied with the unit), then install a filter (field supplied) at suction side.

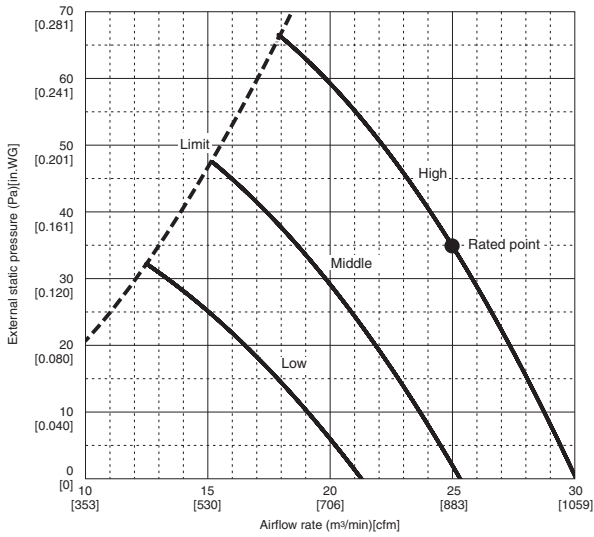




# INDOOR UNIT PEAD-A30AA FAN PERFORMANCE AND AIRFLOW RATES

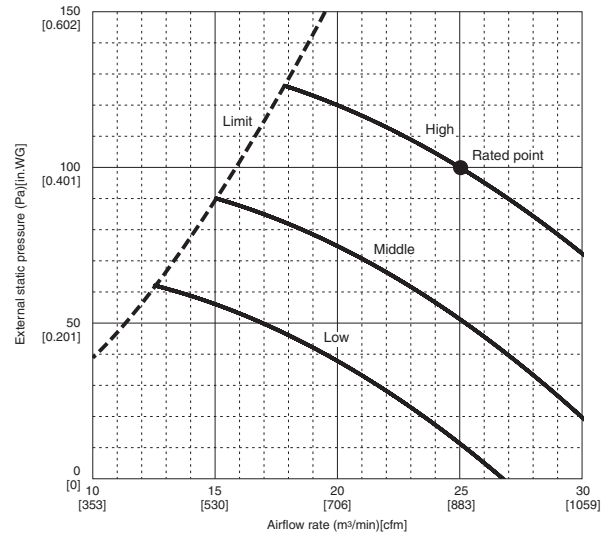
## PEAD-A30AA

(External static pressure 35Pa [0.14 in. WG]) 208-230V 60Hz



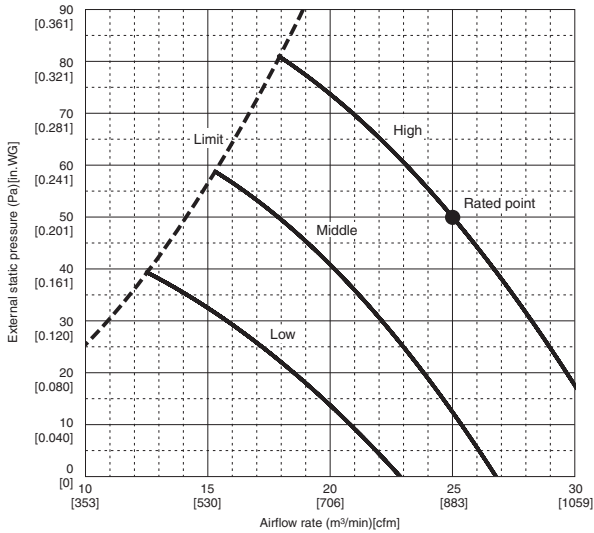
## PEAD-A30AA

(External static pressure 100Pa [0.4 in. WG]) 208-230V 60Hz



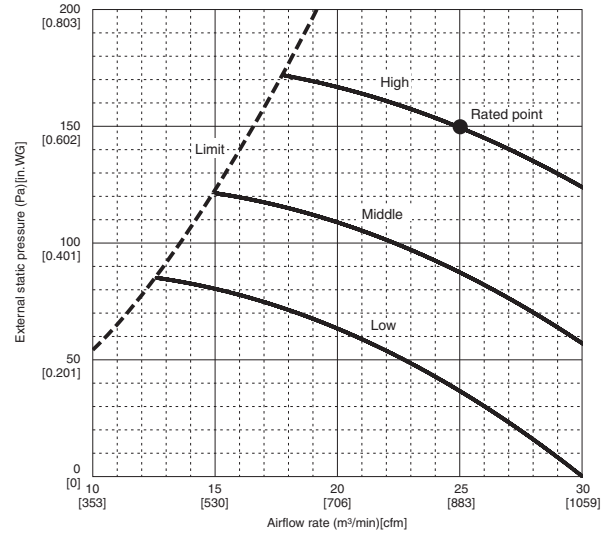
## PEAD-A30AA

(External static pressure 50Pa [0.2 in. WG]) 208-230V 60Hz



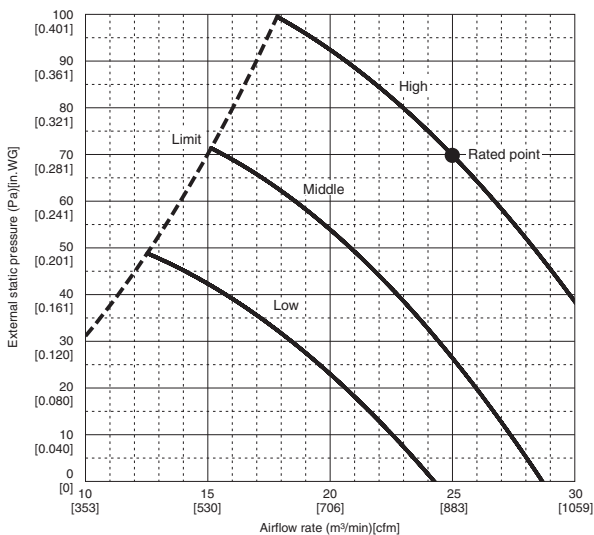
## PEAD-A30AA

(External static pressure 150Pa [0.6 in. WG]) 208-230V 60Hz



## PEAD-A30AA

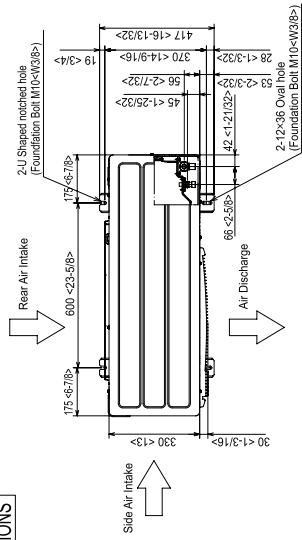
(External static pressure 70Pa [0.3 in. WG]) 208-230V 60Hz





# DIMENSIONS: PUY-A30NHA3

Unit: mm (inch)



### 4 PIPING-WIRING DIRECTIONS

Piping and wiring connections can be made from 4 directions: front, right, rear and below.

### 3 FOUNDATION BOLTS

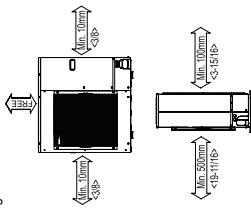
Please secure the unit firmly with 4 foundation (M10<math>\times</math>V3/8) bolts. (Bolts and washers must be purchased locally.)

### 2 SERVICE SPACE

Dimensions of space needed for service access are shown in the below diagram.

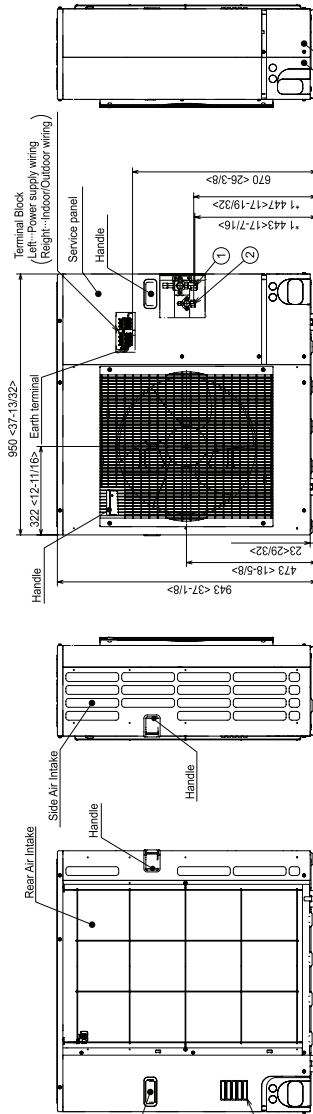
### 1 Clearance Area (Around unit)

The diagram below shows a basic example. Explanation of particular details are given in the installation manuals etc.

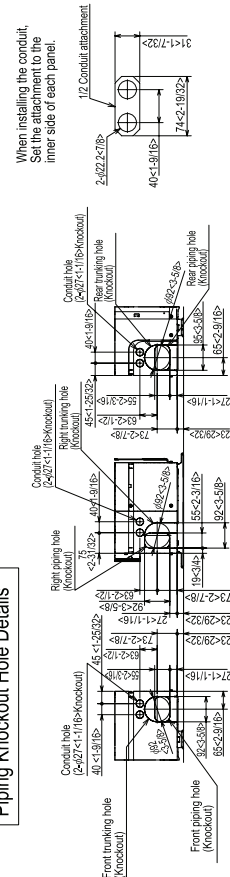


### Example of Notes

- ①...Refrigerant GAS pipe connection (FLARE)/1.5.88<math>\times</math>5/8<math>\times</math>1/2
- ②...Refrigerant LIQUID pipe connection (FLARE)/1.5.52<math>\times</math>3/8<math>\times</math>1/2
- \*1 ...Indication of STOP VALVE connection location.



### Piping Knockout Hole Details



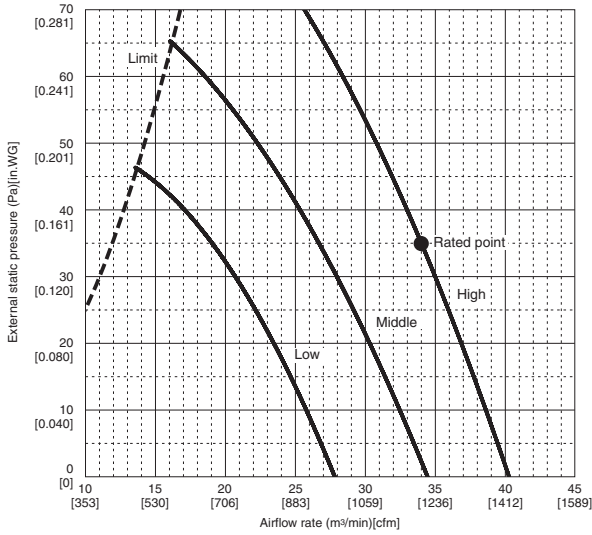
**HVAC Advanced Products Division**  
 3400 Lawrenceville Suwanee Rd  
 Suwanee, GA 30024  
 Tele: 678-376-2900 • Fax: 800-889-9904  
 Toll Free: 800-433-4822 (#3)  
 www.mehvac.com  
**Specifications are subject to change without notice.**



# INDOOR UNIT PEAD-A36AA FAN PERFORMANCE AND AIRFLOW RATES

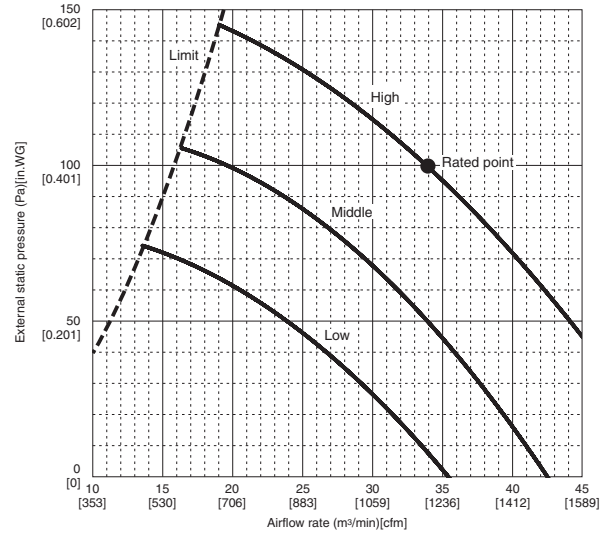
## PEAD-A36AA

(External static pressure 35Pa [0.14 in. WG]) 208-230V 60Hz



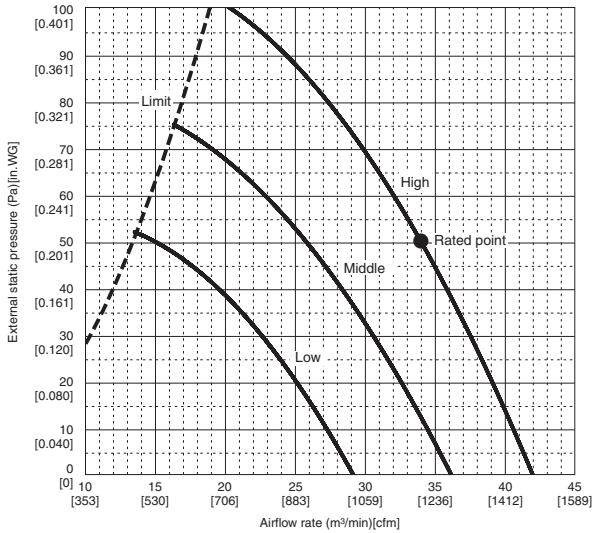
## PEAD-A36AA

(External static pressure 100Pa [0.4 in. WG]) 208-230V 60Hz



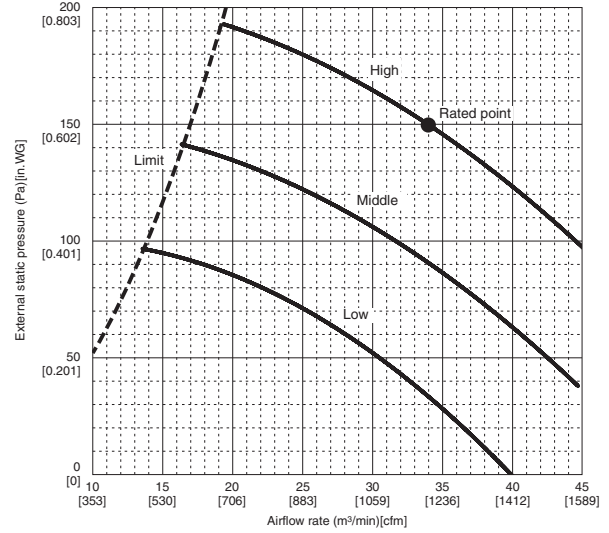
## PEAD-A36AA

(External static pressure 50Pa [0.2 in. WG]) 208-230V 60Hz



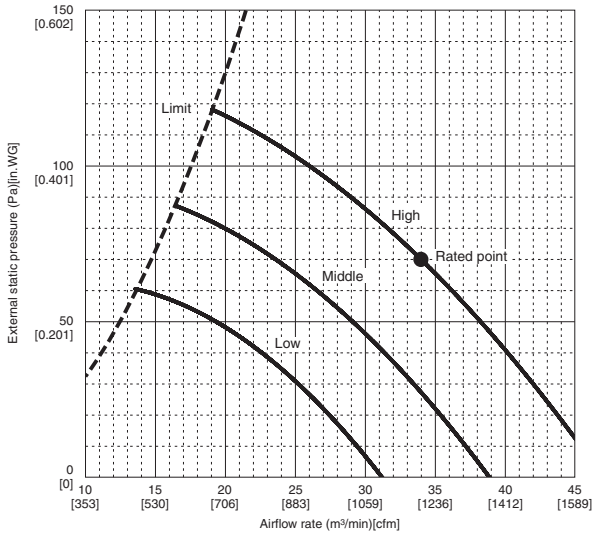
## PEAD-A36AA

(External static pressure 150Pa [0.6 in. WG]) 208-230V 60Hz



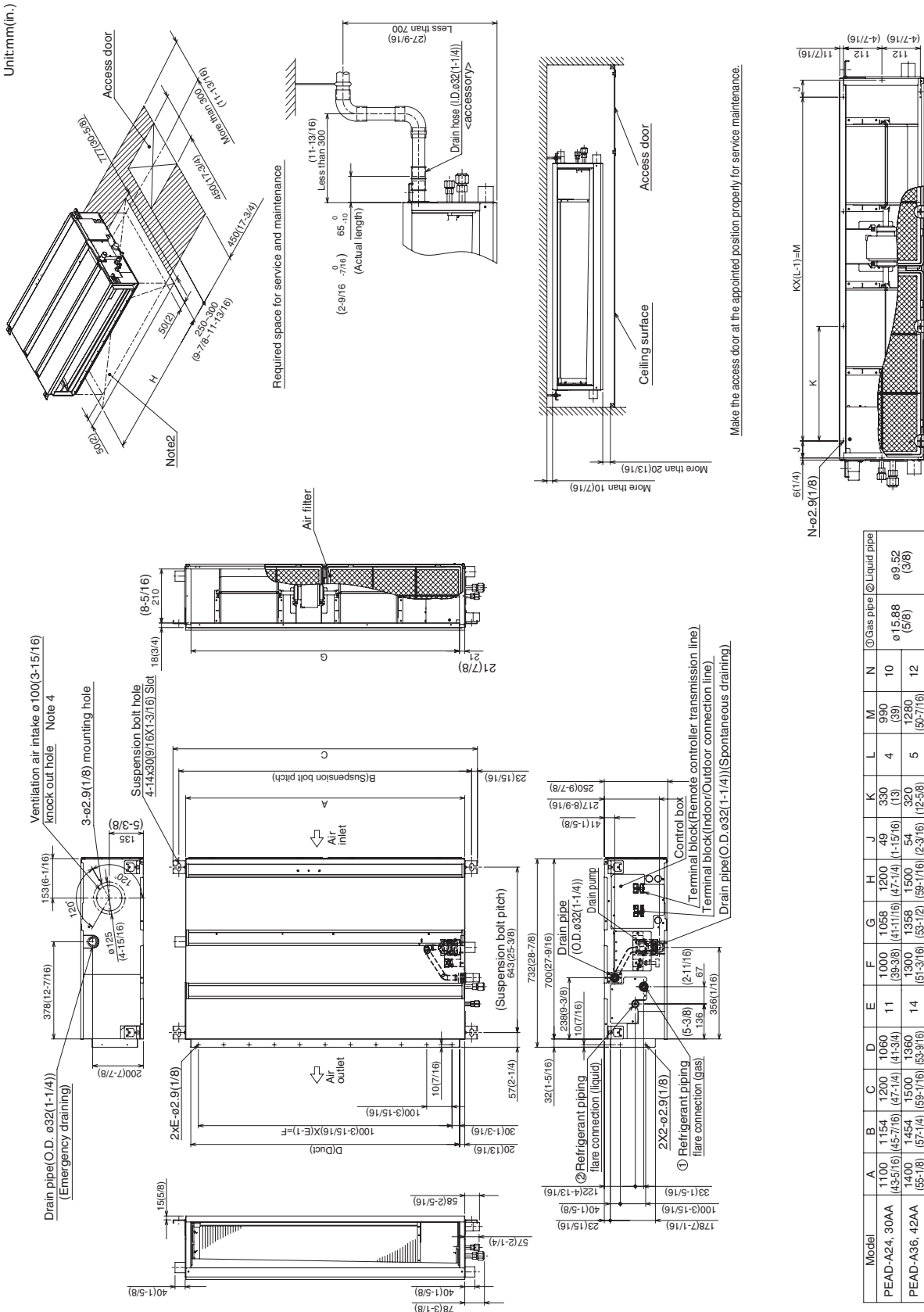
## PEAD-A36AA

(External static pressure 70Pa [0.3 in. WG]) 208-230V 60Hz



# DIMENSIONS: PEAD-A36AA

Unit:mm (in.)



- NOTE 1.** Use M10 screw for the Suspension bolt (field supply).  
**2.** Keep the service space for the maintenance at the bottom.  
**3.** This chart indicates for PEAD-A24-30-36-42AA models, which have 2 fans.  
**4.** In case of the inlet duct is used, remove the air filter (supplied with the unit), then install a filter (field supplied) at suction side.

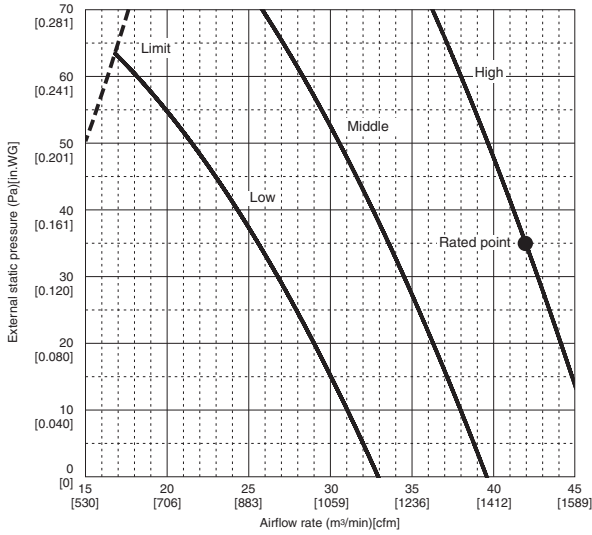




# INDOOR UNIT PEAD-A42AA FAN PERFORMANCE AND AIRFLOW RATES

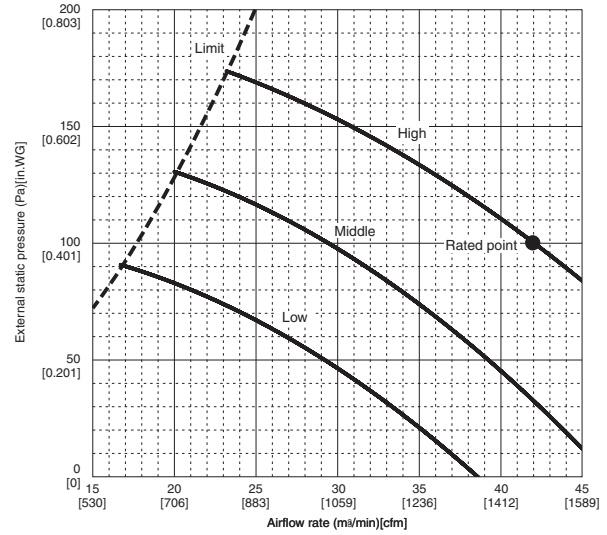
## PEAD-A42AA

(External static pressure 35Pa [0.14 in. WG]) 208-230V 60Hz



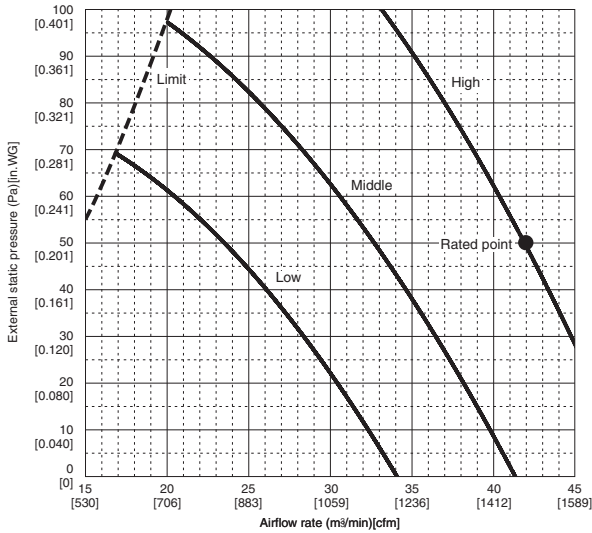
## PEAD-A42AA

(External static pressure 100Pa [0.4 in. WG]) 208-230V 60Hz



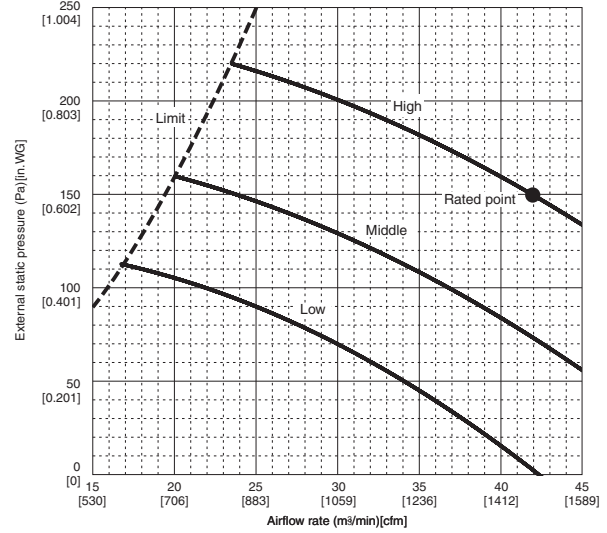
## PEAD-A42AA

(External static pressure 50Pa [0.2 in. WG]) 208-230V 60Hz



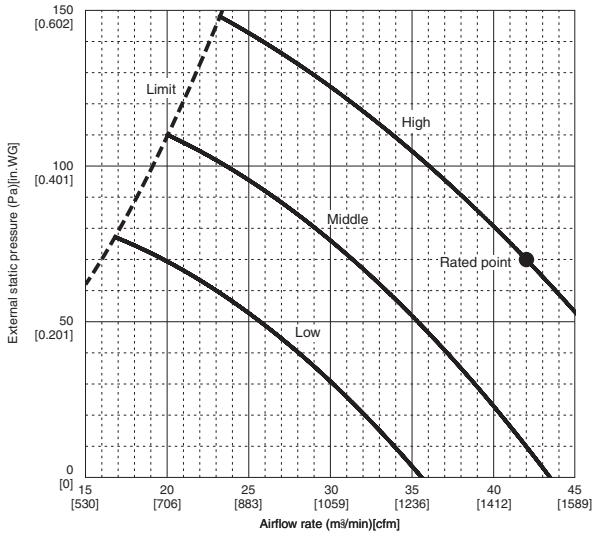
## PEAD-A42AA

(External static pressure 150Pa [0.6 in. WG]) 208-230V 60Hz



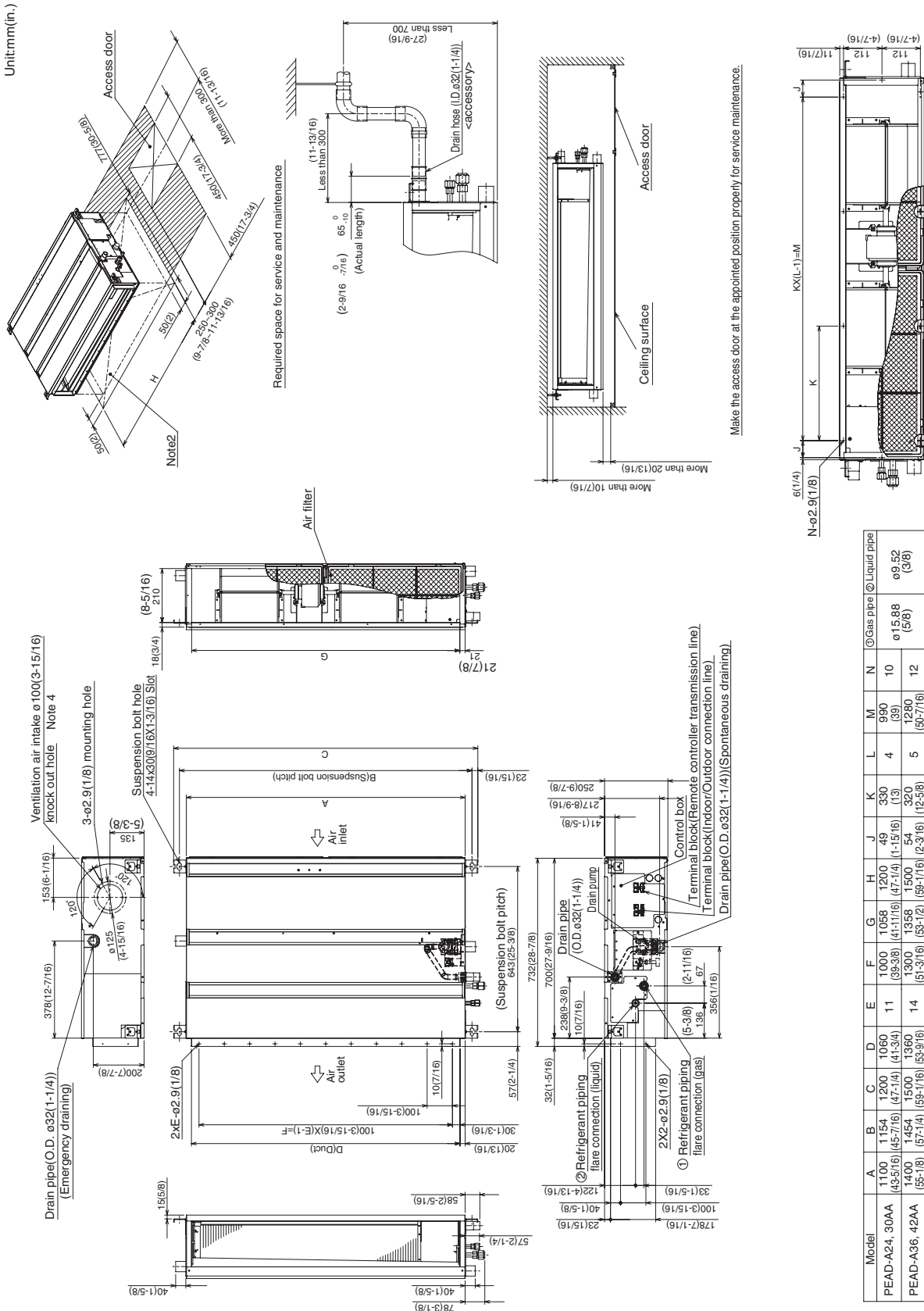
## PEAD-A42AA

(External static pressure 70Pa [0.3 in. WG]) 208-230V 60Hz



# DIMENSIONS: PEAD-A42AA

Unit:mm (in.)



- NOTE 1.** Use M10 screw for the Suspension bolt (field supply).  
**2.** Keep the service space for the maintenance at the bottom.  
**3.** This chart indicates for PEAD-A24-30-36-42AA models, which have 2 fans.  
**4.** In case of the inlet duct is used, remove the air filter (supplied with the unit), then install a filter (field supplied) at suction side.

