

Outdoor Unit Multi-zone Heat Pump Ductless System



turn to the experts™ 

Outdoor Model: **38MGRQ18B--3**

Submittal Data

Job Data:

Location:

Buyer: Buyer P.O. #:

Carrier #:

Unit Number:

Model Number:

Performance Data Certified By:

Date:



MULTI-ZONE STANDARD FEATURES

Features Outdoor:

- Connect 2, multiple style indoor units
 - High Wall
 - Cassette
 - Ducted
 - Floor Console
- Variable Speed (Inverter) Compressor
- Basepan Heater factory installed
- Quiet operation
- Aluminum Blue Hydrophilic pre-coated fins

Cooling operating range -13°~122° F (-25°~50° C)
 Heating operating range -22°~86° F (-30°~30° C)

LIMITED WARRANTY*

- 10 year limited to original purchaser on compressor and parts upon timely registration, otherwise 5 years
- *For residential applications. See warranty for full details.



Performance
SERIES

Compatibility Table

INDOOR UNIT		OUTDOOR UNIT
		38MGRQ18B--3
High Wall	40MAQB09B--3	•
	40MAQB12B--3	•
	40MAQB18B--3	
	40MAQB24B--3	
Cassette	40MBQB09C--3	•
	40MBQB12C--3	•
	40MBQB18C--3	
Ducted	40MBQB09D--3	•
	40MBQB12D--3	•
	40MBQB18D--3	
	40MBQB24D--3	
Floor Console	40MBQB09F--3	•
	40MBQB12F--3	•

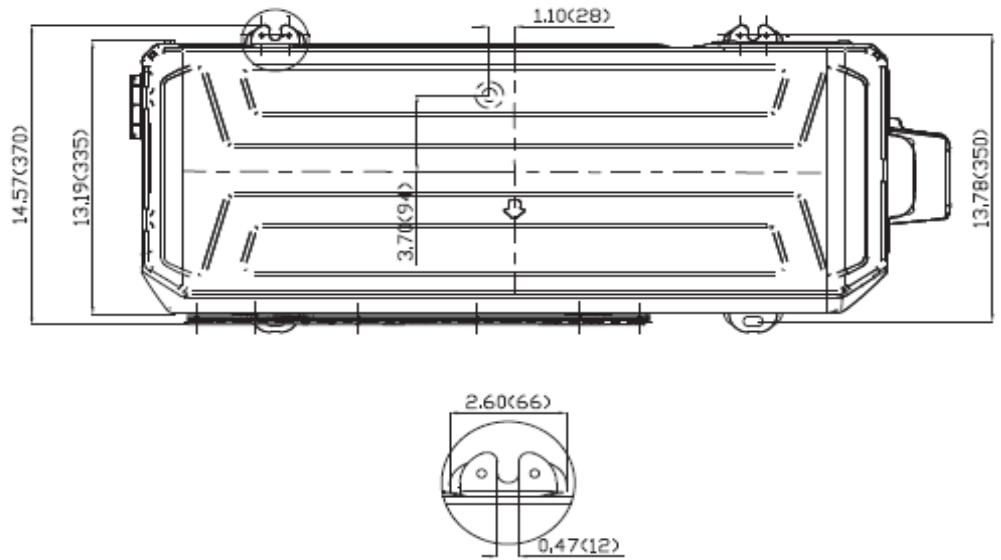
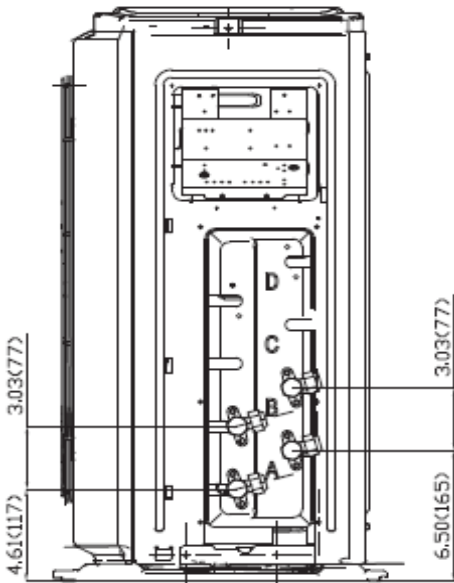
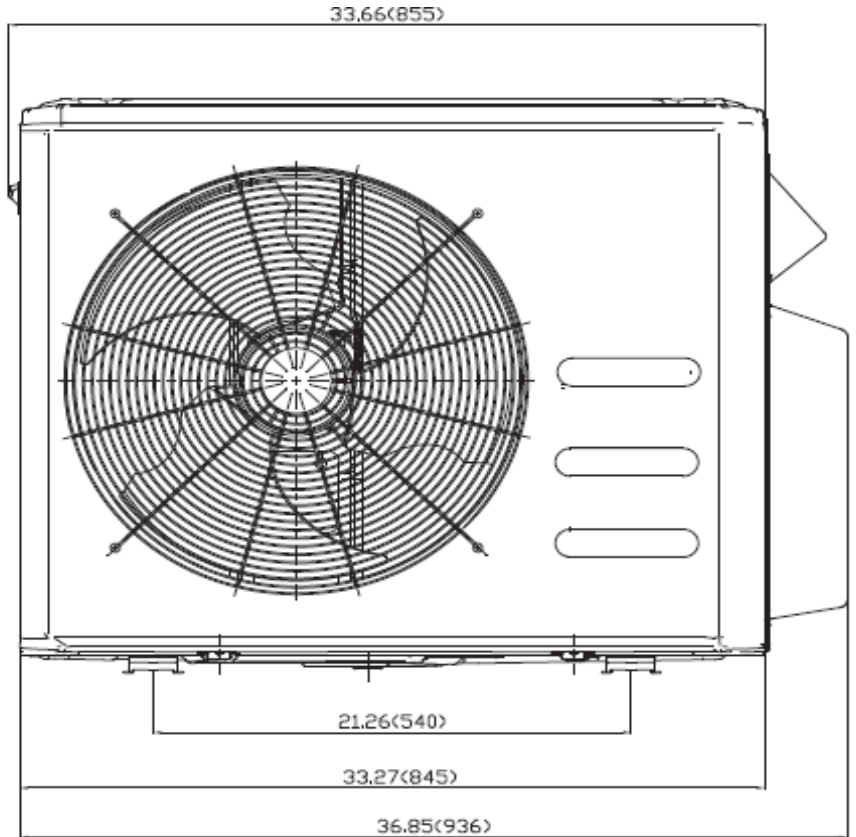
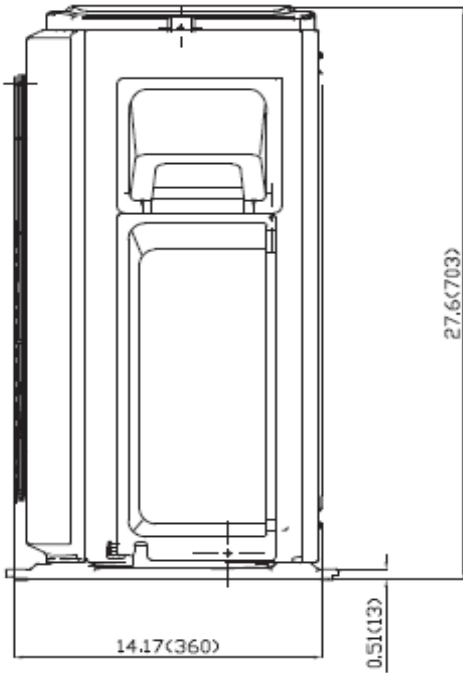
Specifications

System	Size	18	
	Outdoor Model	38MGRQ18B-3	
	Max Number of Zones	2	
Performance Non-Ducted	Energy Star	YES	
	Cooling System Tons	1.5	
	Cooling Rated Capacity	Btu/h	18,000
	Cooling Cap. Range Min - Max	Btu/h	5810~21940
	SEER	22.5	
	EER	12.5	
	Heating Rated Capacity (47°F)	Btu/h	19,000
	Heating Maximum Capacity (5°F)	Btu/h	13,900
	Heating Cap. Range Min - Max	Btu/h	5760~24480
	HSPF	10.3	
	COP (47°F)	W/W	3.6
COP (5°F)	W/W	2.15	
Performance Combination Ducted and Non-Ducted	Energy Star	NO	
	Cooling System Tons	1.5	
	Cooling Rated Capacity	Btu/h	18,000
	Cooling Cap. Range Min - Max	Btu/h	5795~20708
	SEER	20.45	
	EER	12.15	
	Heating Rated Capacity (47°F)	Btu/h	18,750
	Heating Maximum Capacity (5°F)	Btu/h	14,150
	Heating Cap. Range Min - Max	Btu/h	5650~24365
	HSPF	9.85	
	COP (47°F)	W/W	3.7
COP (5°F)	W/W	2.125	
Performance Ducted	Energy Star	NO	
	Cooling System Tons	1.5	
	Cooling Rated Capacity	Btu/h	18,000
	Cooling Cap. Range Min - Max	Btu/h	5780~19476
	SEER	18.4	
	EER	11.8	
	Heating Rated Capacity (47°F)	Btu/h	18,500
	Heating Maximum Capacity (5°F)	Btu/h	14,400
	Heating Cap. Range Min - Max	Btu/h	5539~24249
	HSPF	9.4	
	COP (47°F)	W/W	3.8
COP (5°F)	W/W	2.1	

Operating Range	Cooling Outdoor DB Min - Max	°F(°C)	-13~122 (-25~50)
	Heating Outdoor DB Min - Max	°F(°C)	-22~86 (-30~30)
Piping	Total Piping Length	ft (m)	131(40)
	Piping to furthest FCU	ft (m)	82 (25)
	Drop (OD above ID)	ft (m)	49(15)
	Lift (OD below ID)	ft (m)	49(15)
	Pipe Connection Size - Liquid	in (mm)	1/4*2(6.35*2)
	Pipe Connection Size - Suction	in (mm)	3/8*2(9.52*2)
Refrigerant	Type	R410A	
	Charge	lbs (kg)	4.41 (2.0)
	Metering Device	EEV	
Electrical	Voltage, Phase, Cycle	V/Ph/Hz	208/230-1-60
	Power Supply	Indoor unit powered from outdoor unit	
	MCA	A.	18
	MOCP - Fuse Rating	A.	25
Compressor	Type	R410A	
	Model	ATM150D23UFZ	
	Oil Type	ESTER OIL VG74	
	Oil Charge	Fl. Oz.	17.64
	Rated Current	RLA	10
Outdoor	Unit Width	in (mm)	37.31 (948)
	Unit Height	in (mm)	27.64 (702)
	Unit Depth	in (mm)	14.82 (376)
	Net Weight	lbs (kg)	105.8 (48)
	Airflow	CFM	1390
	Sound Pressure	dB(A)	62.4

Construction View

Outdoor Model: 38MGRQ18B--3



NOTE: Master valves are not available on the size 18 unit.



Outdoor Unit Multi-zone Heat Pump Ductless System



turn to the experts 

Outdoor Model: **38MGRQ24C--3**

Submittal Data

Job Data:

Location:

Buyer: Buyer P.O. #:

Carrier #:

Unit Number:

Model Number:

Performance Data Certified By:

Date:



Performance
SERIES

MULTI-ZONE STANDARD FEATURES

Features Outdoor:

- Connect up to 3, multiple style indoor units
 - High Wall
 - Cassette
 - Ducted
 - Floor Console
- 100% Heating Capacity at 5° F (-15° C)
- Variable Speed (Inverter) Compressor
- Basepan Heater factory installed
- Quiet operation
- Aluminum Blue Hydrophilic pre-coated fins

Cooling operating range -13°~122° F (-25°~50° C)
 Heating operating range -22°~86° F (-30°~30° C)

LIMITED WARRANTY*

- 10 year limited to original purchaser on compressor and parts upon timely registration, otherwise 5 years
- *For residential applications. See warranty for full details.

Compatibility Table

INDOOR UNIT			OUTDOOR UNIT
			38MGRQ24C--3
High Wall	40MAQB09B--3		•
	40MAQB12B--3		•
	40MAQB18B--3		•
Cassette	40MBQB09C--3	40MBCQ09--3	•
	40MBQB12C--3	40MBCQ12--3	•
	40MBQB18C--3	40MBCQ18--3	•
Ducted	40MBQB09D--3		•
	40MBQB12D--3		•
	40MBQB18D--3	40MBDQ18--3	•
Floor Console	40MBQB09F--3	40MBFQ09--3	•
	40MBQB12F--3	40MBFQ12--3	•

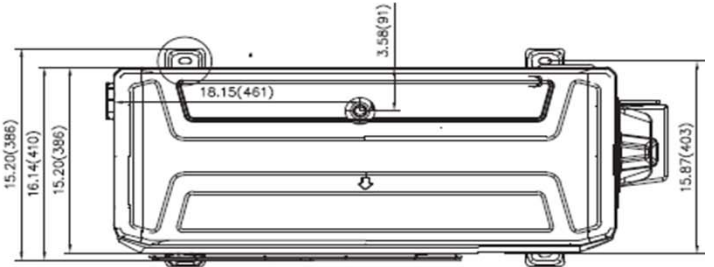
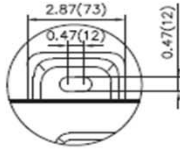
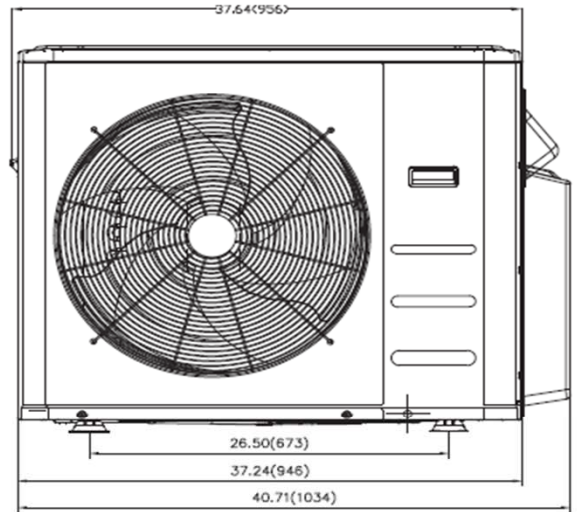
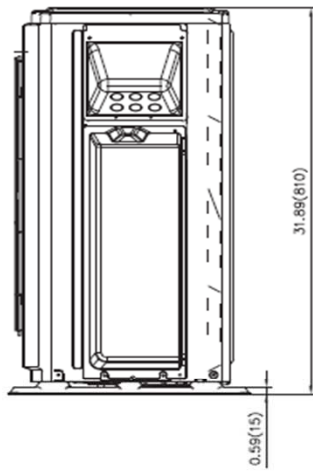
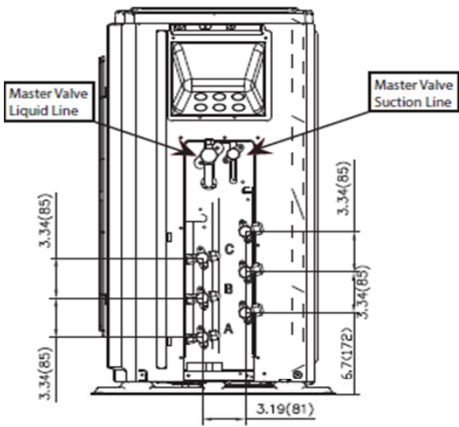
Specifications

System	Size	24	
	Outdoor Model	38MGRQ24C-3	
	Max Number of Zones	3	
Performance Non-Ducted	Energy Star	YES	
	Cooling System Tons	2.0	
	Cooling Rated Capacity	Btu/h	24,000
	Cooling Cap. Range Min - Max	Btu/h	7880~33510
	SEER	23	
	EER	12.5	
	Heating Rated Capacity (47°F)	Btu/h	23,000
	Heating Maximum Capacity (5°F)	Btu/h	23,000
	Heating Cap. Range Min - Max	Btu/h	6010~36180
	HSPF	10	
	COP (47°F)	W/W	3.9
COP (5°F)	W/W	2.1	
Performance Combination Ducted and Non-Ducted	Energy Star	YES	
	Cooling System Tons	1.9	
	Cooling Rated Capacity	Btu/h	23,000
	Cooling Cap. Range Min - Max	Btu/h	7765~31955
	SEER	21	
	EER	12.5	
	Heating Rated Capacity (47°F)	Btu/h	22,000
	Heating Maximum Capacity (5°F)	Btu/h	22,000
	Heating Cap. Range Min - Max	Btu/h	5980~36190
	HSPF	9.4	
	COP (47°F)	W/W	3.85
COP (5°F)	W/W	2.03	
Performance Ducted	Energy Star	YES	
	Cooling System Tons	1.8	
	Cooling Rated Capacity	Btu/h	22,000
	Cooling Cap. Range Min - Max	Btu/h	7650~30400
	SEER	19	
	EER	12.5	
	Heating Rated Capacity (47°F)	Btu/h	21,000
	Heating Maximum Capacity (5°F)	Btu/h	21,000
	Heating Cap. Range Min - Max	Btu/h	5950~36200
	HSPF	8.8	
	COP (47°F)	W/W	3.8
COP (5°F)	W/W	1.96	

Operating Range	Cooling Outdoor DB Min - Max	°F(°C)	-13~122 (-25~50)
	Heating Outdoor DB Min - Max	°F(°C)	-22~86 (-30~30)
Piping	Total Piping Length	ft (m)	197(60)
	Piping to furthest FCU	ft (m)	98 (30)
	Drop (OD above ID)	ft (m)	49(15)
	Lift (OD below ID)	ft (m)	49(15)
	Pipe Connection Size - Liquid	in (mm)	1/4*3(6.35*3)
	Pipe Connection Size - Suction	in (mm)	3/8*3(9.52*3)
Refrigerant	Type	R410A	
	Charge	lbs (kg)	6.17(2.8)
	Metering Device	EEV	
Electrical	Voltage, Phase, Cycle	V/Ph/Hz	208/230-1-60
	Power Supply	Indoor unit powered from outdoor unit	
	MCA	A.	25
	MOCP - Fuse Rating	A.	35
Compressor	Type	R410A	
	Model	ATF235D22UMT	
	Oil Type	ESTER OIL VG74	
	Oil Charge	Fl. Oz.	23.58
	Rated Current	RLA	15
Outdoor	Unit Width	in (mm)	41.22 (1047)
	Unit Height	in (mm)	31.88 (810)
	Unit Depth	in (mm)	17.91 (455)
	Net Weight	lbs (kg)	149.9 (68)
	Airflow	CFM	2130
	Sound Pressure	dB(A)	63.4

Construction View

Outdoor Model: 38MGRQ24C--3



Outdoor Unit Multi-zone Heat Pump Ductless System



turn to the experts™

Outdoor Model: 38MGRQ30D--3

Submittal Data

Job Data:

Location:

Buyer: Buyer P.O. #:

Carrier #:

Unit Number:

Model Number:

Performance Data Certified By:

Date:



MULTI-ZONE STANDARD FEATURES

Features Outdoor:

- Connect up to 4, multiple style indoor units
 - High Wall
 - Cassette
 - Ducted
 - Floor Console
- 100% Heating Capacity at 5° F (-15° C)
- Variable Speed (Inverter) Compressor
- Basepan Heater factory installed
- Quiet operation
- Aluminum Blue Hydrophilic pre-coated fins

Cooling operating range -13°~122° F (-25°~50° C)

Heating operating range -22°~86° F (-30°~30° C)

LIMITED WARRANTY*

- 10 year limited to original purchaser on compressor and parts upon timely registration, otherwise 5 years
- *For residential applications. See warranty for full details.



Performance
SERIES

Compatibility Table

INDOOR UNIT		OUTDOOR UNIT
		38MGRQ30D--3
High Wall	40MAQB09B--3	•
	40MAQB12B--3	•
	40MAQB18B--3	•
	40MAQB24B--3	•
Cassette	40MBQB09C--3	•
	40MBQB12C--3	•
	40MBQB18C--3	•
Ducted	40MBQB09D--3	•
	40MBQB12D--3	•
	40MBQB18D--3	•
	40MBQB24D--3	•
Floor Console	40MBQB09F--3	•
	40MBQB12F--3	•

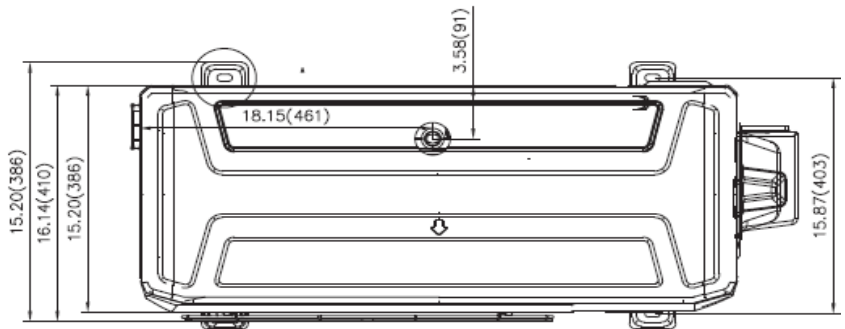
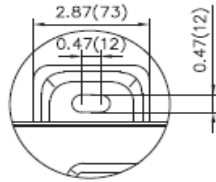
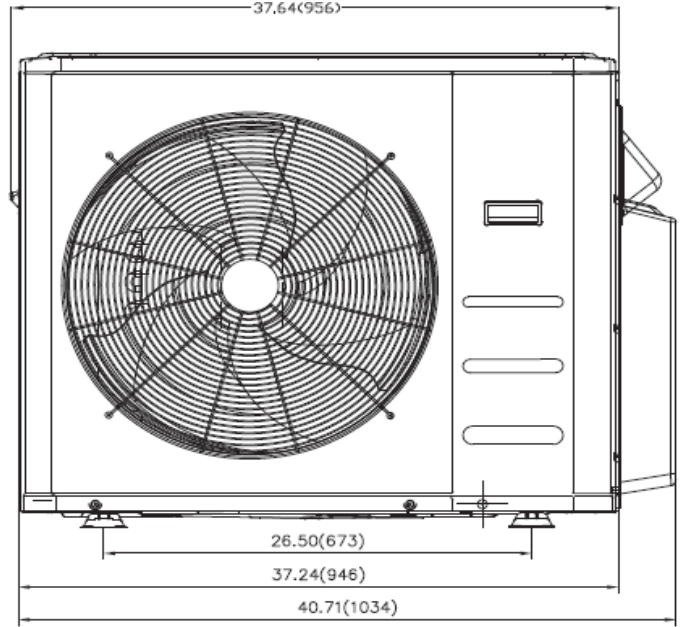
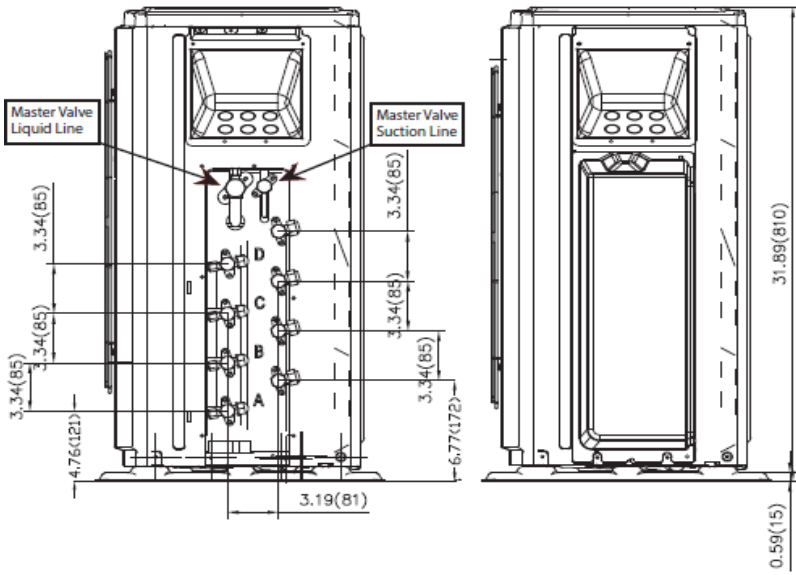
Specifications

System	Size	30	
	Outdoor Model	38MGRQ30D-3	
	Max Number of Zones	4	
Performance Non-Ducted	Energy Star	YES	
	Cooling System Tons	2.5	
	Cooling Rated Capacity	Btu/h	30,000
	Cooling Cap. Range Min - Max	Btu/h	8090~41470
	SEER	23.8	
	EER	12.5	
	Heating Rated Capacity (47°F)	Btu/h	28,000
	Heating Maximum Capacity (5°F)	Btu/h	28,000
	Heating Cap. Range Min - Max	Btu/h	6350~41950
	HSPF	10	
	COP (47°F)	W/W	3.8
COP (5°F)	W/W	2	
Performance Combination Ducted and Non-Ducted	Energy Star	NO	
	Cooling System Tons	2.4	
	Cooling Rated Capacity	Btu/h	29,000
	Cooling Cap. Range Min - Max	Btu/h	8060~39990
	SEER	21.65	
	EER	12	
	Heating Rated Capacity (47°F)	Btu/h	28,000
	Heating Maximum Capacity (5°F)	Btu/h	28,000
	Heating Cap. Range Min - Max	Btu/h	6275~42305
	HSPF	9.5	
	COP (47°F)	W/W	3.7
COP (5°F)	W/W	1.99	
Performance Ducted	Energy Star	NO	
	Cooling System Tons	2.3	
	Cooling Rated Capacity	Btu/h	28,000
	Cooling Cap. Range Min - Max	Btu/h	8030~38510
	SEER	19.5	
	EER	11.5	
	Heating Rated Capacity (47°F)	Btu/h	28,000
	Heating Maximum Capacity (5°F)	Btu/h	28,000
	Heating Cap. Range Min - Max	Btu/h	6200~42660
	HSPF	9	
	COP (47°F)	W/W	3.6
COP (5°F)	W/W	1.98	

Operating Range	Cooling Outdoor DB Min - Max	°F(°C)	-13~122 (-25~50)
	Heating Outdoor DB Min - Max	°F(°C)	-22~86 (-30~30)
Piping	Total Piping Length	ft (m)	263(80)
	Piping to furthest FCU	ft (m)	115(35)
	Drop (OD above ID)	ft (m)	49(15)
	Lift (OD below ID)	ft (m)	49(15)
	Pipe Connection Size - Liquid	in (mm)	1/4*4(6.35*4)
	Pipe Connection Size - Suction	in (mm)	1/2 *1+ 3/8*3 (12.7*1+9.52*3)
Refrigerant	Type	R410A	
	Charge	lbs (kg)	6.61 (3.0)
	Metering Device	0	
Electrical	Voltage, Phase, Cycle	V/Ph/Hz	208/230-1-60
	Power Supply	Indoor unit powered from outdoor unit	
	MCA	A.	30
	MOCP - Fuse Rating	A.	45
Compressor	Type	R410A	
	Model	ATF310D43UMT	
	Oil Type	ESTER OIL VG74	
	Oil Charge	Fl. Oz.	35.27
	Rated Current	RLA	19
Outdoor	Unit Width	in (mm)	41.22 (1047)
	Unit Height	in (mm)	31.88 (810)
	Unit Depth	in (mm)	17.91 (455)
	Net Weight	lbs (kg)	156.5 (71)
	Airflow	CFM	2130
	Sound Pressure	dB(A)	62.3

Construction View

Outdoor Model: **38MGRQ30D--3**



Outdoor Unit Multi-zone Heat Pump Ductless System



turn to the experts™

Outdoor Model: **38MGRQ36D--3**

Submittal Data

Job Data:

Location:

Buyer: Buyer P.O. #:

Carrier #:

Unit Number:

Model Number:

Performance Data Certified By:

Date:



MULTI-ZONE STANDARD FEATURES

Features Outdoor:

- Connect up to 4, multiple style indoor units
 - High Wall
 - Cassette
 - Ducted
 - Floor Console
- 100% Heating Capacity at 5° F (-15° C)
- Variable Speed (Inverter) Compressor
- Basepan Heater factory installed
- Quiet operation
- Aluminum Blue Hydrophilic pre-coated fins

Cooling operating range -13°~122° F (-25°~50° C)

Heating operating range -22°~86° F (-30°~30° C)

LIMITED WARRANTY*

- 10 year limited to original purchaser on compressor and parts upon timely registration, otherwise 5 years

*For residential applications. See warranty for full details.



Performance
SERIES

Compatibility Table

INDOOR UNIT		OUTDOOR UNIT
		38MGRQ36D--3
High Wall	40MAQB09B--3	•
	40MAQB12B--3	•
	40MAQB18B--3	•
	40MAQB24B--3	•
Cassette	40MBQB09C--3	•
	40MBQB12C--3	•
	40MBQB18C--3	•
Ducted	40MBQB09D--3	•
	40MBQB12D--3	•
	40MBQB18D--3	•
	40MBQB24D--3	•
Floor Console	40MBQB09F--3	•
	40MBQB12F--3	•

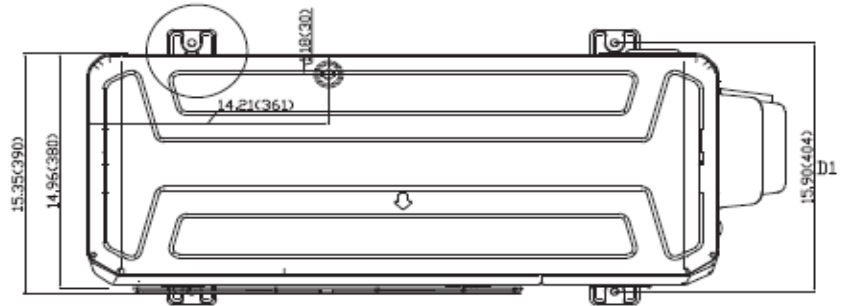
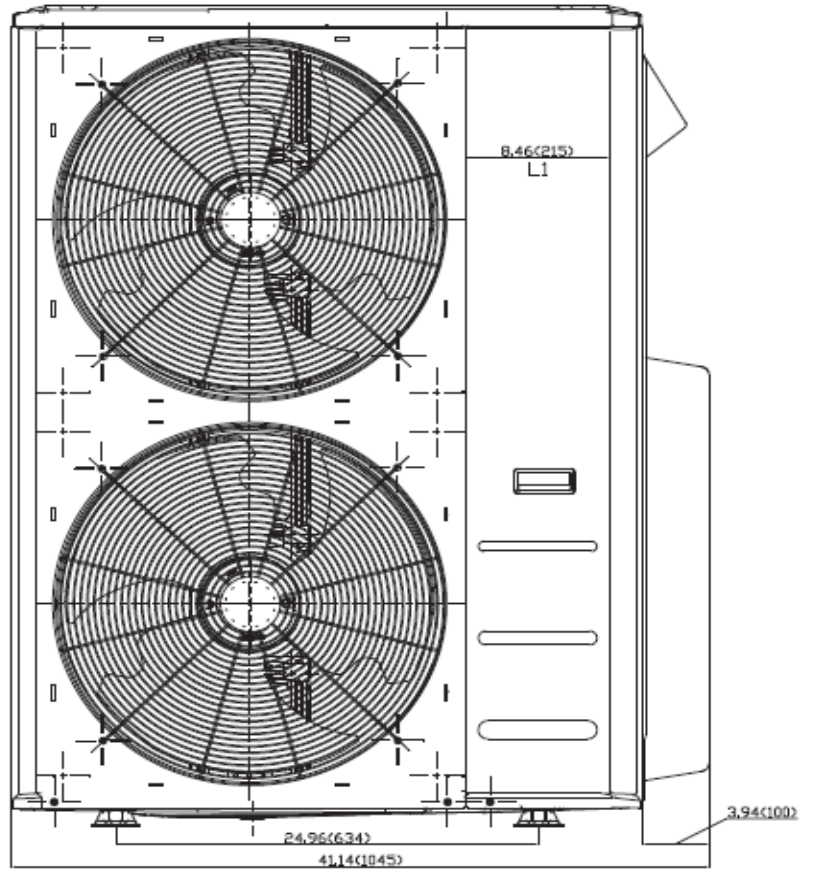
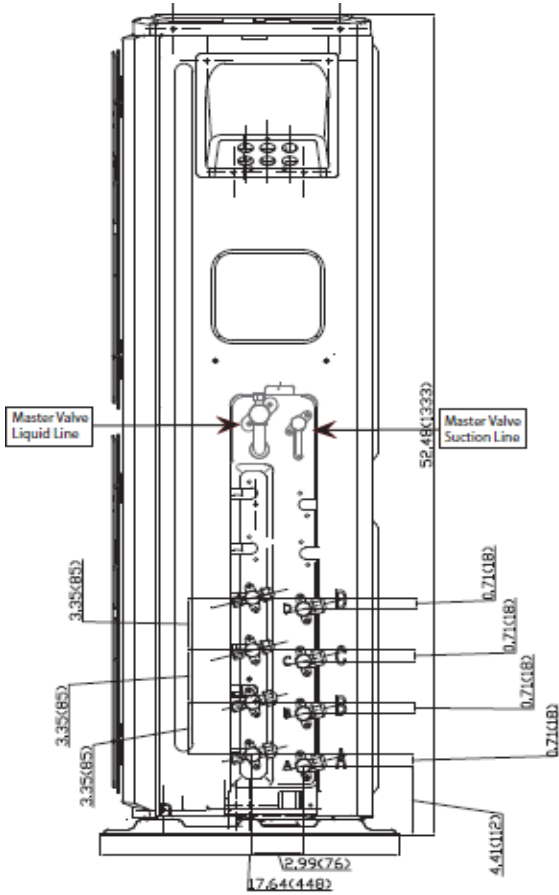
Specifications

System	Size	36	
	Outdoor Model	38MGRQ36D-3	
	Max Number of Zones	4	
Performance Non-Ducted	Energy Star	YES	
	Cooling System Tons	3.0	
	Cooling Rated Capacity	Btu/h	36,000
	Cooling Cap. Range Min - Max	Btu/h	8560~45020
	SEER	21.5	
	EER	13.5	
	Heating Rated Capacity (47°F)	Btu/h	36,000
	Heating Maximum Capacity (5°F)	Btu/h	36,000
	Heating Cap. Range Min - Max	Btu/h	7210~50350
	HSPF	10.5	
	COP (47°F)	W/W	3.8
COP (5°F)	W/W	1.78	
Performance Combination Ducted and Non-Ducted	Energy Star	NO	
	Cooling System Tons	3.0	
	Cooling Rated Capacity	Btu/h	35,500
	Cooling Cap. Range Min - Max	Btu/h	8510~42635
	SEER	19.25	
	EER	12.15	
	Heating Rated Capacity (47°F)	Btu/h	36,000
	Heating Maximum Capacity (5°F)	Btu/h	35,500
	Heating Cap. Range Min - Max	Btu/h	7045~47800
	HSPF	9.85	
	COP (47°F)	W/W	3.7
COP (5°F)	W/W	1.76	
Performance Ducted	Energy Star	NO	
	Cooling System Tons	2.9	
	Cooling Rated Capacity	Btu/h	35,000
	Cooling Cap. Range Min - Max	Btu/h	8460~40250
	SEER	17	
	EER	10.8	
	Heating Rated Capacity (47°F)	Btu/h	36,000
	Heating Maximum Capacity (5°F)	Btu/h	35,000
	Heating Cap. Range Min - Max	Btu/h	6880~45250
	HSPF	9.2	
	COP (47°F)	W/W	3.6
COP (5°F)	W/W	1.74	

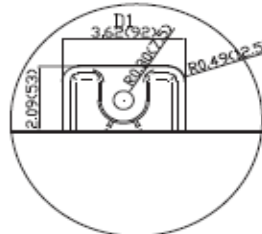
Operating Range	Cooling Outdoor DB Min - Max	°F(°C)	-13~122 (-25~50)
	Heating Outdoor DB Min - Max	°F(°C)	-22~86 (-30~30)
Piping	Total Piping Length	ft (m)	328(100)
	Piping to furthest FCU	ft (m)	115(35)
	Drop (OD above ID)	ft (m)	65(20)
	Lift (OD below ID)	ft (m)	65(20)
	Pipe Connection Size - Liquid	in (mm)	1/4*4(6.35*4)
	Pipe Connection Size - Suction	in (mm)	1/2 *1+ 3/8*3 (12.7*1+9.52*3)
Refrigerant	Type	R410A	
	Charge	lbs (kg)	10.13 (4.6)
	Metering Device	EEV	
Electrical	Voltage, Phase, Cycle	V/Ph/Hz	208/230-1-60
	Power Supply	Indoor unit powered from outdoor unit	
	MCA	A.	35
	MOCP - Fuse Rating	A.	50
Compressor	Type	R410A	
	Model	ATQ360D1UMU	
	Oil Type	ESTER OIL VG74	
	Oil Charge	Fl. Oz.	49.38
	Rated Current	RLA	21
Outdoor	Unit Width	in (mm)	41.15 (1045)
	Unit Height	in (mm)	52.48 (1333)
	Unit Depth	in (mm)	17.63 (448)
	Net Weight	lbs (kg)	221.6 (100.5)
	Airflow	CFM	4500
	Sound Pressure	dB(A)	64

Construction View

Outdoor Model: 38MGRQ36D--3



DETAIL .



Outdoor Unit Multi-zone Heat Pump Ductless System



turn to the experts™

Outdoor Model: 38MGRQ48E--3

Submittal Data

Job Data:

Location:

Buyer: Buyer P.O. #:

Carrier #:

Unit Number:

Model Number:

Performance Data Certified By:

Date:



MULTI-ZONE STANDARD FEATURES

Features Outdoor:

- Connect up to 5, multiple style indoor units
 - High Wall
 - Cassette
 - Ducted
 - Floor Console

- Variable Speed (Inverter) Compressor
- Basepan Heater factory installed
- Quiet operation
- Aluminum Blue Hydrophilic pre-coated fins

Cooling operating range -13°~122° F (-25°~50° C)
 Heating operating range -22°~86° F (-30°~30° C)

LIMITED WARRANTY*

- 10 year limited to original purchaser on compressor and parts upon timely registration, otherwise 5 years
- *For residential applications. See warranty for full details.



Performance
SERIES

Compatibility Table

INDOOR UNIT		OUTDOOR UNIT
		38MGRQ48E--3
High Wall	40MAQB09B--3	•
	40MAQB12B--3	•
	40MAQB18B--3	•
	40MAQB24B--3	•
Cassette	40MBQB09C--3	•
	40MBQB12C--3	•
	40MBQB18C--3	•
Ducted	40MBQB09D--3	•
	40MBQB12D--3	•
	40MBQB18D--3	•
	40MBQB24D--3	•
Floor Console	40MBQB09F--3	•
	40MBQB12F--3	•

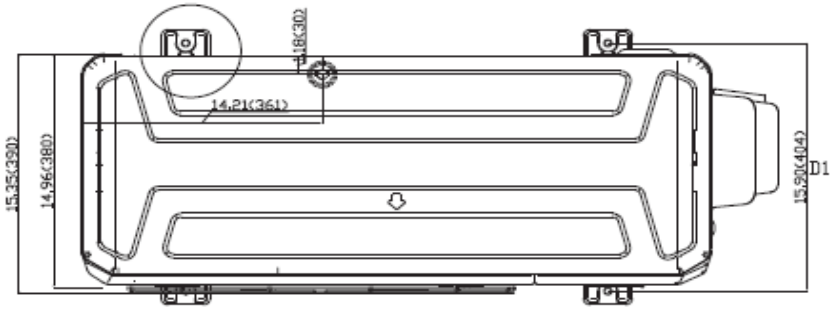
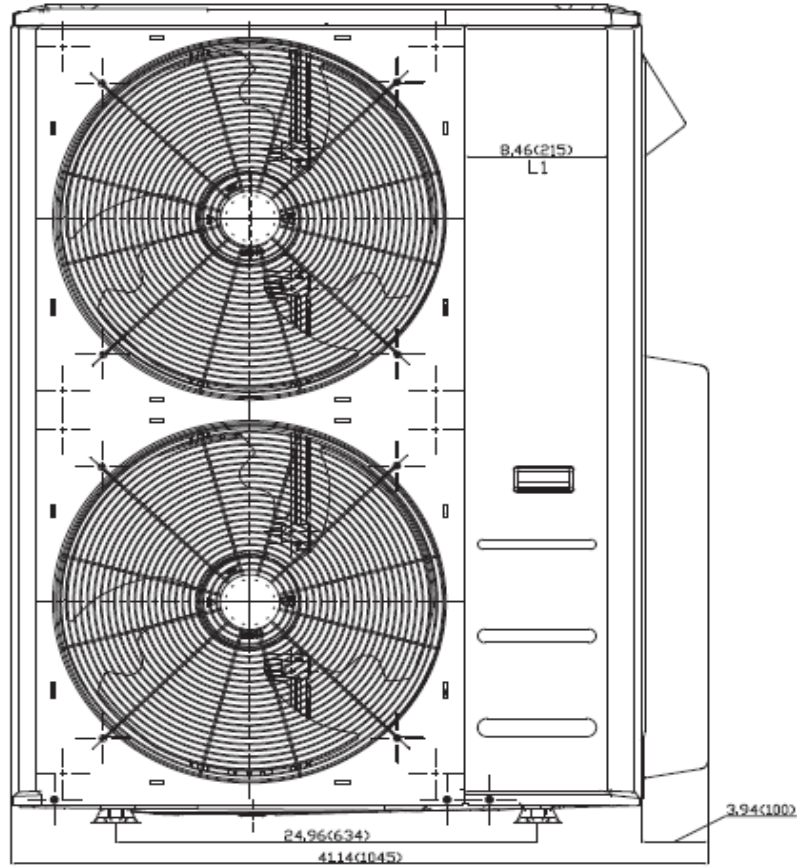
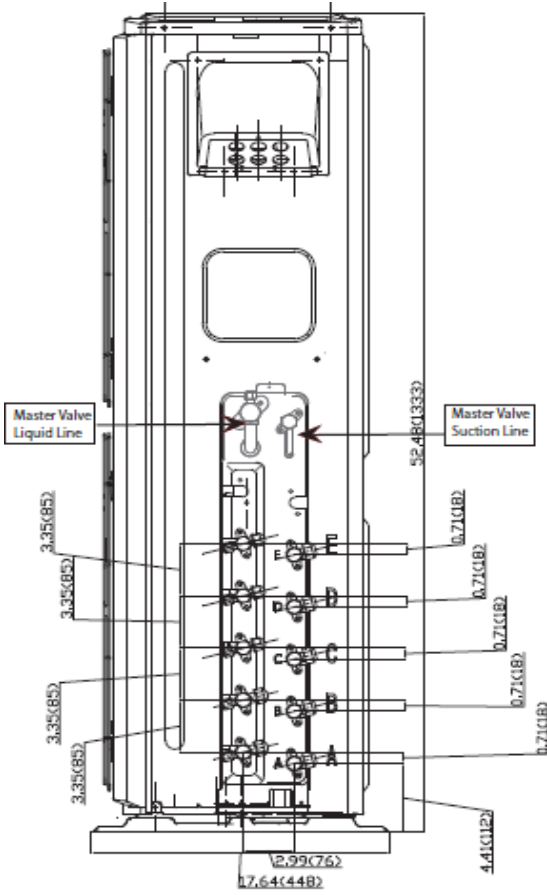
Specifications

System	Size	48	
	Outdoor Model	38MGRQ48E-3	
	Max Number of Zones	5	
Performance Non-Ducted	Energy Star	YES	
	Cooling System Tons	4.0	
	Cooling Rated Capacity	Btu/h	48,000
	Cooling Cap. Range Min - Max	Btu/h	8560~53160
	SEER	22.4	
	EER	12.5	
	Heating Rated Capacity (47°F)	Btu/h	48,000
	Heating Maximum Capacity (5°F)	Btu/h	36,000
	Heating Cap. Range Min - Max	Btu/h	7210~55820
	HSPF	10.2	
	COP (47°F)	W/W	3.6
COP (5°F)	W/W	1.96	
Performance Combination Ducted and Non-Ducted	Energy Star	NO	
	Cooling System Tons	4.0	
	Cooling Rated Capacity	Btu/h	48,000
	Cooling Cap. Range Min - Max	Btu/h	8510~52580
	SEER	20	
	EER	11.3	
	Heating Rated Capacity (47°F)	Btu/h	49,000
	Heating Maximum Capacity (5°F)	Btu/h	36,400
	Heating Cap. Range Min - Max	Btu/h	7045~54935
	HSPF	10.15	
	COP (47°F)	W/W	3.5
COP (5°F)	W/W	1.89	
Performance Ducted	Energy Star	NO	
	Cooling System Tons	4.0	
	Cooling Rated Capacity	Btu/h	48,000
	Cooling Cap. Range Min - Max	Btu/h	8460~52000
	SEER	17.6	
	EER	10.1	
	Heating Rated Capacity (47°F)	Btu/h	50,000
	Heating Maximum Capacity (5°F)	Btu/h	36,800
	Heating Cap. Range Min - Max	Btu/h	6880~54050
	HSPF	10.1	
	COP (47°F)	W/W	3.4
COP (5°F)	W/W	1.82	

Operating Range	Cooling Outdoor DB Min - Max	°F(°C)	-13~122 (-25~50)
	Heating Outdoor DB Min - Max	°F(°C)	-22~86 (-30~30)
Piping	Total Piping Length	ft (m)	328(100)
	Piping to furthest FCU	ft (m)	115 (35)
	Drop (OD above ID)	ft (m)	65(20)
	Lift (OD below ID)	ft (m)	65(20)
	Pipe Connection Size - Liquid	in (mm)	1/4*5(6.35*5)
	Pipe Connection Size - Suction	in (mm)	1/2 *2+ 3/8*3 (12.7*2+9.52*3)
Refrigerant	Type	R410A	
	Charge	lbs (kg)	10.13 (4.6)
	Metering Device	EEV	
Electrical	Voltage, Phase, Cycle	V/Ph/Hz	208/230-1-60
	Power Supply	Indoor unit powered from outdoor unit	
	MCA	A.	35
	MOCP - Fuse Rating	A.	50
Compressor	Type	R410A	
	Model	ATQ360D1UMU	
	Oil Type	ESTER OIL VG74	
	Oil Charge	Fl. Oz.	49.38
	Rated Current	RLA	21
Outdoor	Unit Width	in (mm)	41.15 (1045)
	Unit Height	in (mm)	52.48 (1333)
	Unit Depth	in (mm)	17.63 (448)
	Net Weight	lbs (kg)	223.8 (101.5)
	Airflow	CFM	4500
	Sound Pressure	dB(A)	64

Construction View

Outdoor Model: 38MGRQ48E--3



DETAIL .

